

WAAS CH <b>90344</b> <b>W10A</b>	APP CRS <b>103°</b>	Rwy Idg TDZE Apt Elev	<b>5000</b> <b>3167</b> <b>3167</b>
--	------------------------	-----------------------------	---

# RNAV (GPS) RWY 10

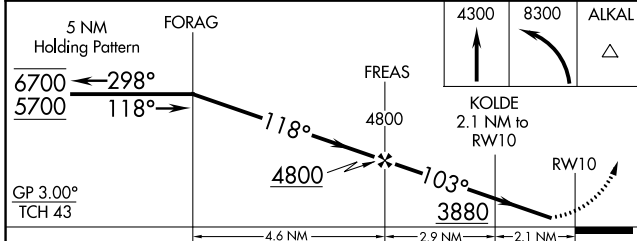
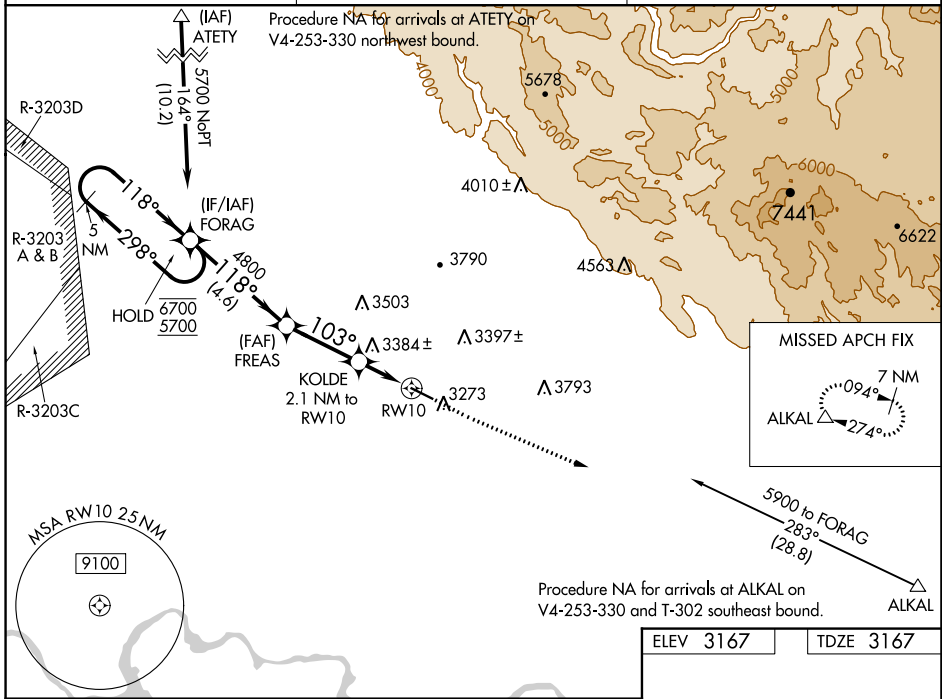
MOUNTAIN HOME MUNI (U76)

RNP APCH-GPS.

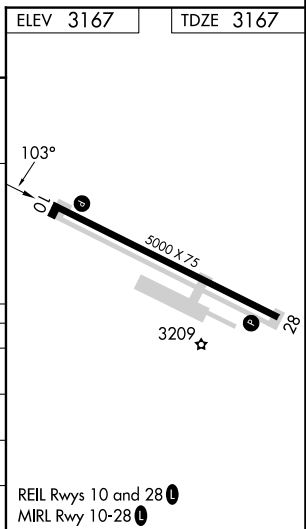
▼ Rwy 10 helicopter visibility reduction below ¼ SM NA.  
 ▲ NA Baro-VNAV NA. Hold-in-lieu NA when R-3203A/B/C/D is active. Use Mountain Home AFB altimeter setting.

MISSED APPROACH: Climb to 4300 then climbing left turn to 8300 direct ALKAL and hold, continue climb-in-hold to 8300.

KMUO ATIS <b>273.5</b>	MOUNTAIN HOME APP CON * <b>124.8 259.1</b>	AUNICOM <b>122.8 (CTAF) 0</b>
---------------------------	---	----------------------------------



CATEGORY	A	B	C	D
LPV DA		3460-7/8	293 (300-7/8)	
LNAV/VNAV DA		3604-1/4	437 (500-1/4)	
LNAV MDA	3680-1	513 (600-1)	3680-1 3/8	513 (600-1 3/8)
CIRCLING	3680-1 513 (600-1)	3780-1 613 (700-1)	3780-1 3/4 613 (700-3/4)	4180-3 1013 (1100-3)



NW-1, 01 DEC 2022 to 29 DEC 2022

NW-1, 01 DEC 2022 to 29 DEC 2022