

WAAS CH <b>78335</b> <b>W14A</b>	APP CRS <b>143°</b>	Rwy Idg <b>4400</b> TDZE <b>1798</b> Apt Elev <b>1800</b>
--	------------------------	---

# RNAV (GPS) RWY 14

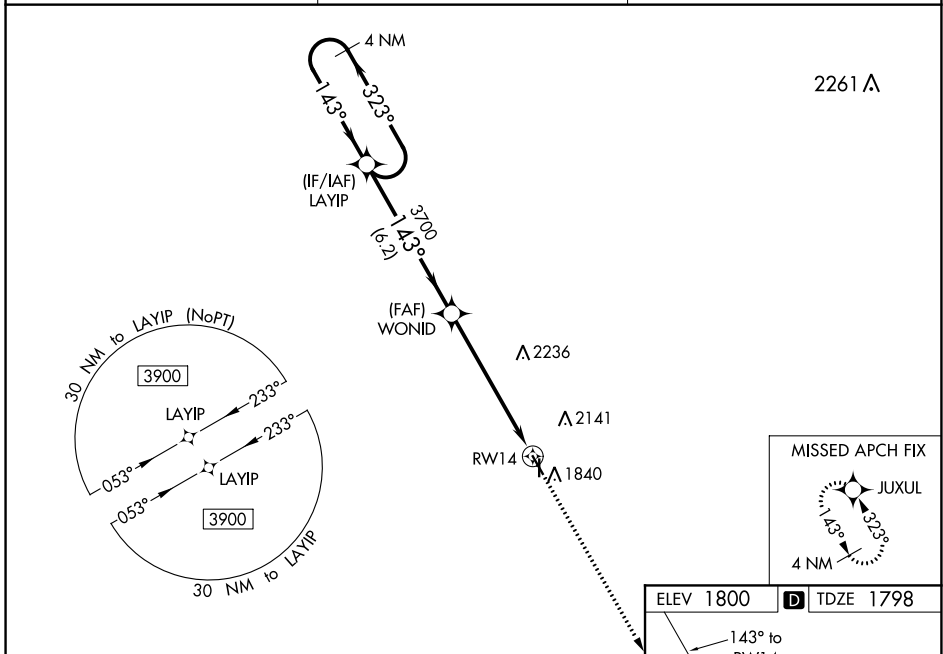
SMITH CENTER MUNI (K82)

RNP APCH-GPS.

For uncompensated Baro-VNAV systems, LNAV/VNAV NA below -18°C or above 54°C. When local altimeter setting not received, use Concordia altimeter setting and increase all DA 169 feet and all MDA 180 feet; increase LPV all Cats visibility ¼ SM, LNAV/VNAV all Cats visibility ½ SM, Circling Cat A visibility ¼ SM and Circling Cat B visibility ½ SM. Baro-VNAV and VDP NA with Concordia altimeter setting. Circling Rwy 36 NA at night.

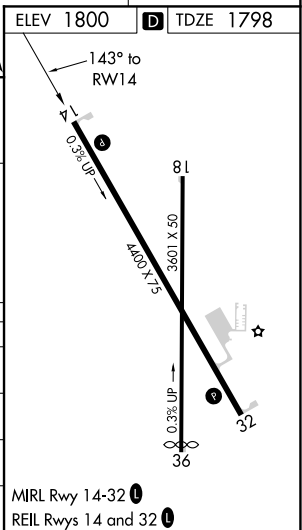
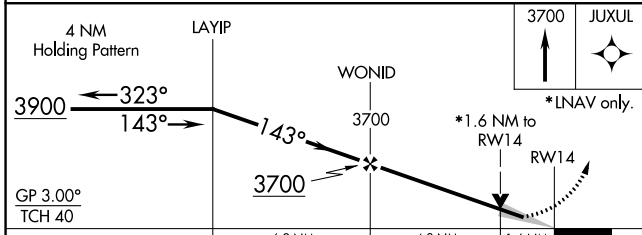
MISSED APPROACH:  
Climb to 3700 direct  
JUXUL and hold.

AWOS-3PT <b>118.45</b>	MINNEAPOLIS CENTER <b>119.4 278.8</b>	UNICOM <b>122.8 (CTAF) 0</b>
---------------------------	--	---------------------------------



NC-2, 01 DEC 2022 to 29 DEC 2022

NC-2, 01 DEC 2022 to 29 DEC 2022



CATEGORY	A	B	C	D
LPV DA	1998-1	200 (200-1)		NA
LNAV/VNAV DA	2076-1	278 (300-1)		NA
LNAV MDA	2320-1	522 (600-1)		NA
<b>C</b> CIRCLING	2480-1 680 (700-1)	2580-1 780 (800-1)		NA