

LOC/DME I-IPJ 111.15 Chan 48 (Y)	APP CRS 233°	Rwy Idg TDZE Apt Elev	5501 872 878
---	------------------------	-----------------------------	---

ILS Y or LOC Y RWY 23

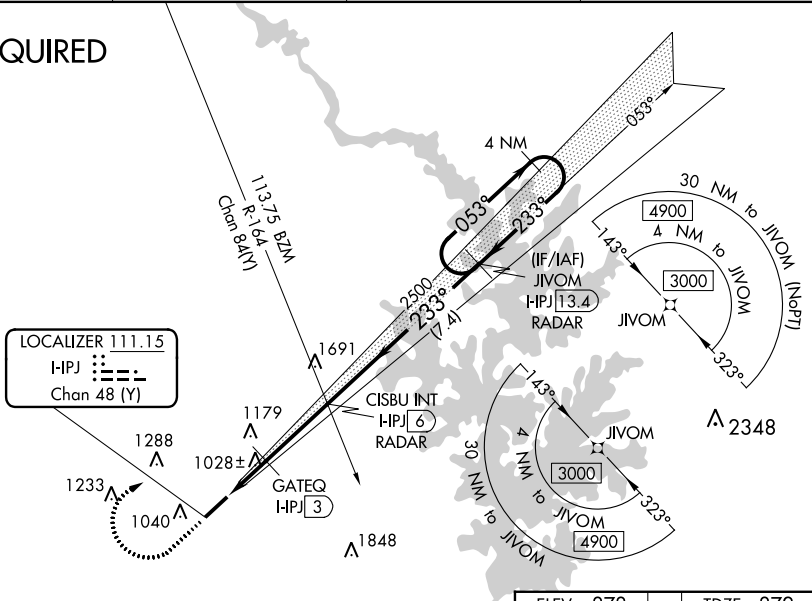
LINCOLNTON-LINCOLN COUNTY RGNL (IPJ)

⚠ When local altimeter setting not received, use Charlotte altimeter setting: increase DA to 1212 feet and visibility $\frac{1}{8}$ SM; increase all MDAs 80 feet and visibility S-LOC 23 Cats C/D $\frac{1}{8}$ SM and Circling Cats C/D visibility $\frac{1}{4}$ SM and GATEQ Fix Minimums Cats C/D $\frac{1}{4}$ SM. VDP NA when using Charlotte altimeter setting. Rwy 23 helicopter visibility reduction below $\frac{3}{4}$ SM NA.

MISSED APPROACH: Climb to 1600 then climbing right turn to 3100 direct JIVOM I-IPJ 13.4 DME/RADAR and hold (GPS Required).

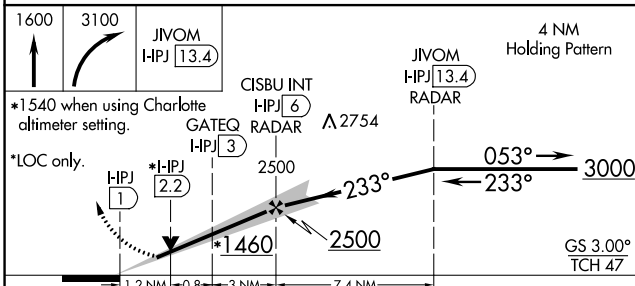
AWOS-3 119.675	CHARLOTTE APP CON 134.75 257.2	CLNC DEL (GCO) 124.9	UNICOM 123.05 (CTAF) 0
--------------------------	--	--------------------------------	----------------------------------

GPS REQUIRED



SE-2, 01 DEC 2022 to 29 DEC 2022

SE-2, 01 DEC 2022 to 29 DEC 2022



ELEV 878	TDZE 872
REIL Rwys 5 and 23 0	
MIRL Rwy 5-23 0	
FAF to MAP 5 NM	
Knots	60 90 120 150 180
Min:Sec	5:00 3:20 2:30 2:00 1:40

CATEGORY	A	B	C	D
S-ILS 23	1149- $\frac{7}{8}$ 277 (300- $\frac{7}{8}$)			
S-LOC 23	1460-1	588 (600-1)	1460-1 $\frac{3}{4}$	588 (600-1 $\frac{3}{4}$)
C CIRCLING	1460-1	582 (600-1)	1640-2 $\frac{1}{4}$	1640-2 $\frac{1}{2}$
GATEQ FIX MINIMUMS				
S-LOC 23	1280-1	408 (500-1)	1280-1 $\frac{1}{8}$	408 (500-1 $\frac{1}{8}$)
C CIRCLING	1400-1	1440-1	1640-2 $\frac{1}{4}$	1640-2 $\frac{1}{2}$
	522 (600-1)	562 (600-1)	762 (800-2 $\frac{1}{4}$)	762 (800-2 $\frac{1}{2}$)