

WAAS CH <b>65923</b> <b>W23A</b>	APP CRS <b>227°</b>	Rwy Idg TDZE <b>1218</b> Apt Elev <b>1219</b>	<b>5003</b>
--	------------------------	---	-------------

# RNAV (GPS) RWY 23

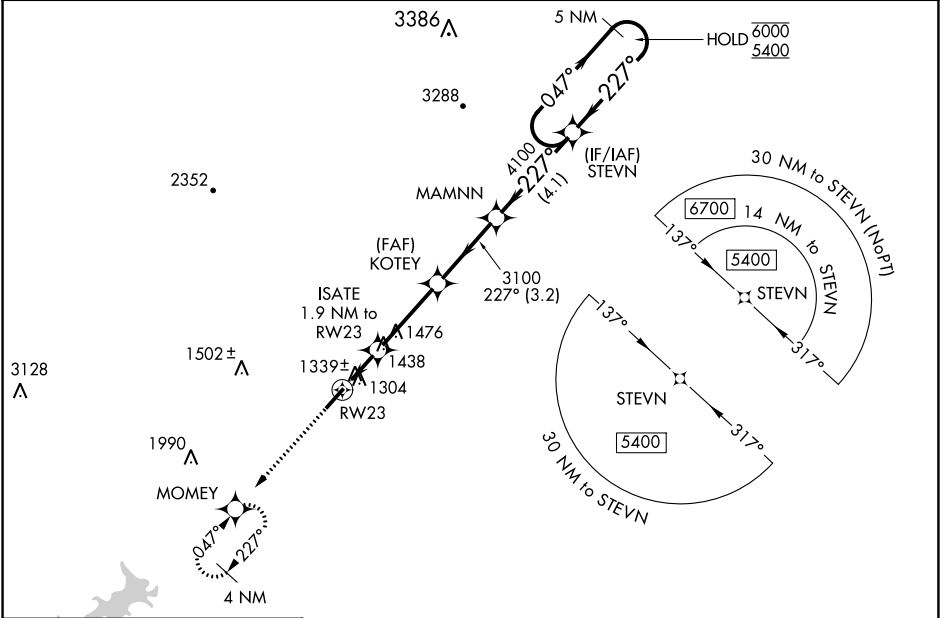
CHEROKEE COUNTY RGNL (CNI)

RNP APCH.

**⚠** Rwy 23 helicopter visibility reduction below 1 SM NA. When local altimeter setting not received, use Marietta altimeter setting and increase all MDA 80 feet; Increase LP and Circling Cat C visibility ¼ SM and LNAV Cat C visibility ½ SM. Straight-in Rwy 23 NA at night, Circling Rwy 23 NA at night.

**MISSED APPROACH:** Climb to 4000 direct MOMEY and hold, continue climb-in-hold to 4000.

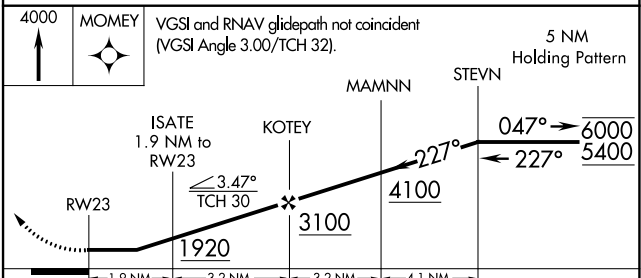
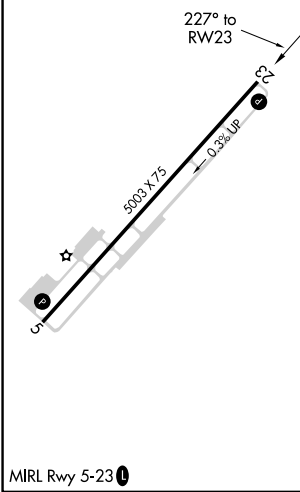
AWOS-3 <b>119,825</b>	ATLANTA APP CON <b>121.0 268.7</b>	UNICOM <b>123.0 (CTAF)</b>
--------------------------	---------------------------------------	-------------------------------



SE-4, 01 DEC 2022 to 29 DEC 2022

SE-4, 01 DEC 2022 to 29 DEC 2022

ELEV 1219	TDZE 1218
-----------	-----------



CATEGORY	A	B	C	D
LP MDA	1600-1	382 (400-1)	1600-1½ 382 (400-1½)	NA
LNAV MDA	1740-1	522 (600-1)	1740-1½ 522 (600-1½)	NA
<b>C</b> CIRCLING	1740-1	521 (600-1)	1820-1¾ 601 (700-1¾)	NA