

WAAS CH <b>56605</b> <b>W05A</b>	APP CRS <b>047°</b>	Rwy Idg TDZE Apt Elev	<b>5003</b> <b>1219</b> <b>1219</b>
--	------------------------	-----------------------------	---

# RNAV (GPS) RWY 5

CHEROKEE COUNTY RGNL (CNI)

RNP APCH-GPS.

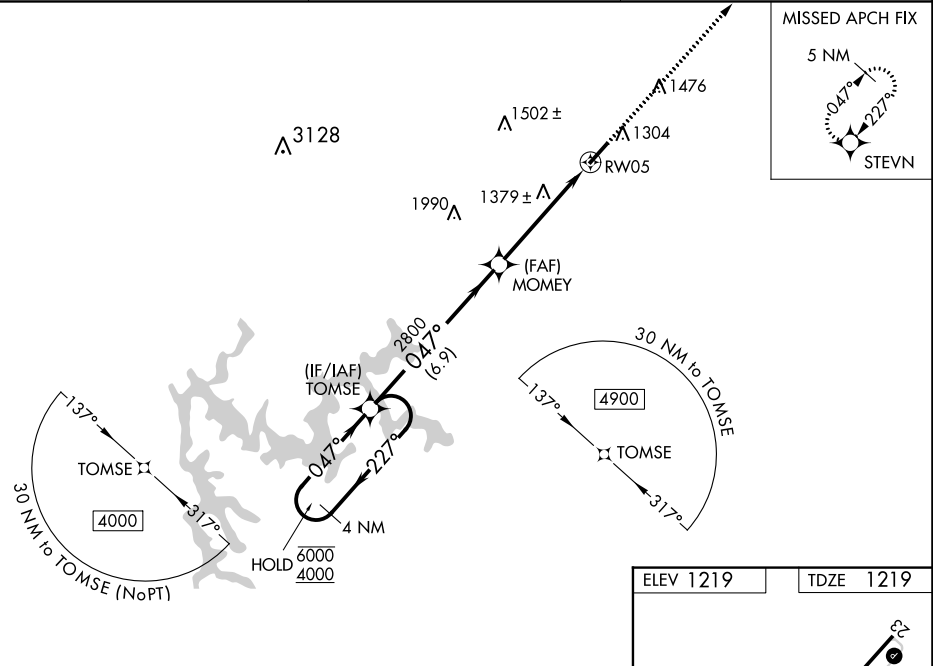
- ▼ Circling Rwy 23 NA at night. Baro-VNAV and VDP NA when using Marietta altimeter setting.
- ▲ For uncompensated Baro-VNAV systems, LNAV/VNAV NA below -17°C or above 36°C.
- ▲ When local altimeter setting not received, use Marietta altimeter setting and increase LPV DA to 1546 feet and visibility all Cats 1/8 SM; increase LNAV/VNAV DA to 1631 feet; increase all MDAs 80 feet and LNAV Cats C/D visibility 1/8 SM and Circling Cats C/D visibility 1/4 SM.

MISSED APPROACH: Climb to 5400 direct STEVN and hold, continue climb-in-hold to 5400.

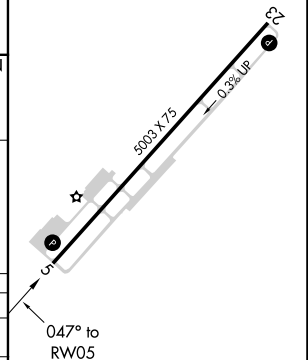
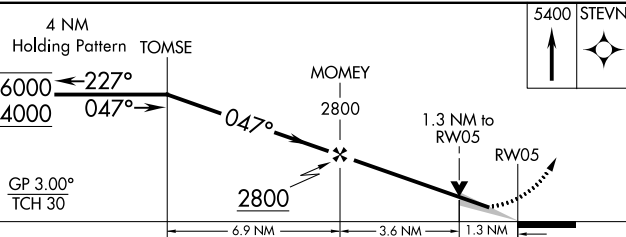
AWOS-3  
**119.825**

ATLANTA APP CON  
**121.0 268.7**

UNICOM  
**123.0 (CTAF) 0**



ELEV 1219	TDZE 1219
-----------	-----------



CATEGORY	A	B	C	D
LPV DA		1469-7/8	250 (300-7/8)	
LNAV/VNAV DA		1554-1 1/8	335 (400-1 1/8)	
LNAV MDA	1640-1	421 (500-1)	1640-1 1/4	421 (500-1 1/4)
<b>C</b> CIRCLING	1720-1	501 (600-1)	1820-1 3/4 601 (700-1 3/4)	2040-2 3/4 821 (900-2 3/4)

MIRL Rwy 5-23 0