

APP CRS	Rwy Idg	5000
216°	TDZE	80
	Apt Elev	80

RNAV (GPS) RWY 20

KLAWOCK (AKW) (PAKW)

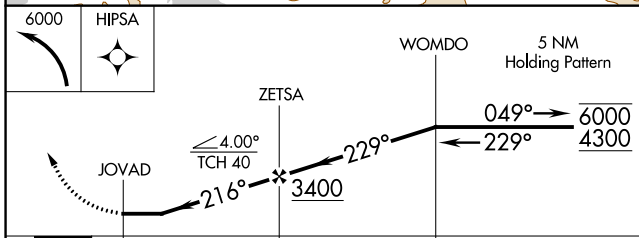
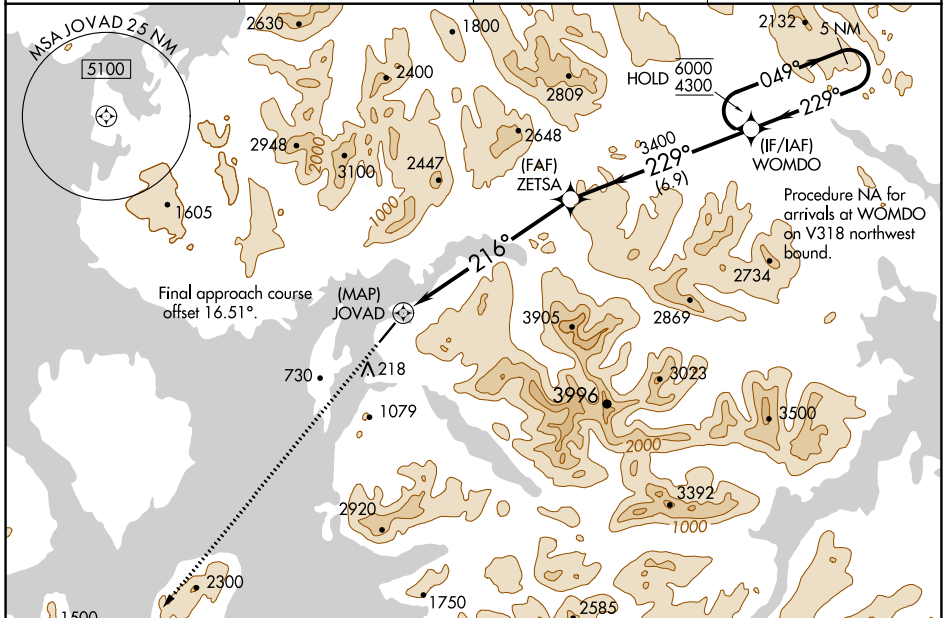
RNP APCH-GPS.

Procedure NA at night. Rwy 20 helicopter visibility reduction below 1 SM NA. Circling NA east of Rwy 2-20.

-10°C

MISSED APPROACH: Climbing left turn to 6000 direct HIPSA and hold, continue climb-in-hold to 6000.

ASOS 135.45	ANCHORAGE CENTER 118.5 284.6	KETCHIKAN RADIO 122.25 0	CTAF 120.9
-----------------------	--	------------------------------------	----------------------



CATEGORY	A	B	C	D
LNVA MDA	2340-1¼ 2260 (2300-1¼)	2340-1½ 2260 (2300-1½)		NA
CIRCLING	2340-1¼ 2260 (2300-1¼)	2340-1½ 2260 (2300-1½)		NA

ELEV 80	TDZE 80
---------	---------

REIL Rwy 2 and 20
MIRL Rwy 2-20

AK, 03 NOV 2022 to 29 DEC 2022

AK, 03 NOV 2022 to 29 DEC 2022