

(TURTY4.TURTY) 18032

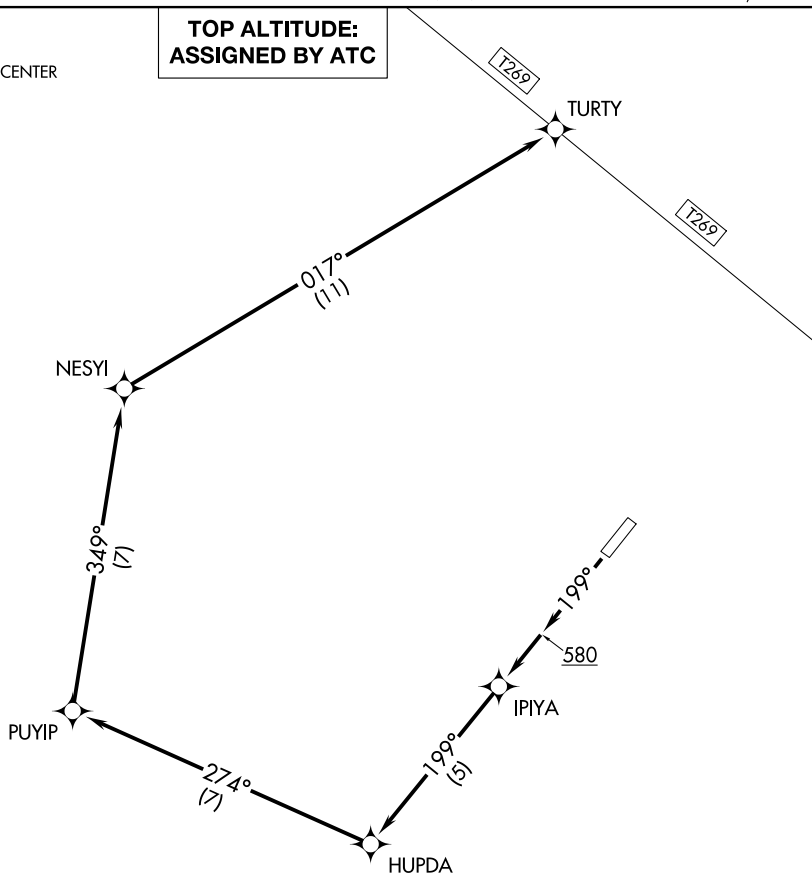
# TURTY FOUR DEPARTURE (RNAV)

AL-9230 (FAA)

KLAWOCK (AKW)(PAKW)  
KLAWOCK, ALASKA

ASOS  
135.45  
ANCHORAGE CENTER  
118.5 284.6  
CTAF  
120.9

**TOP ALTITUDE:  
ASSIGNED BY ATC**



NOTE: RNAV 1.

NOTE: GPS required.

### TAKEOFF MINIMUMS

Rwy 2: NA- Obstacles.

Rwy 20: Standard with a minimum climb of 427' per NM to 2500.

NOTE: Chart not to scale.



### DEPARTURE ROUTE DESCRIPTION

TAKEOFF RUNWAY 20: Climb heading 199° to 580, then climb to 6000 direct IPIYA and on depicted route to TURTY, thence . . . .

. . . . maintain ATC assigned altitude. Expect clearance to filed altitude 10 minutes after departure.

# TURTY FOUR DEPARTURE (RNAV)

(TURTY4.TURTY) 01FEB18

KLAWOCK, ALASKA  
KLAWOCK (AKW)(PAKW)

AK, 03 NOV 2022 to 29 DEC 2022

AK, 03 NOV 2022 to 29 DEC 2022