

APP CRS	Rwy Idg	<b>3701</b>
<b>003°</b>	TDZE	<b>82</b>
	Apt Elev	<b>82</b>

# RNAV (GPS) RWY 36

PETER PRINCE FLD (2R4)

RNP APCH.

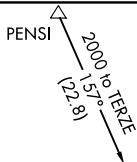
**NA** Rwy 36 helicopter visibility reduction below 1 SM NA.  
 Use Pensacola Intl altimeter setting; when not received, use Crestview altimeter setting and increase all MDA 40 feet; increase LNAV visibility Cat C 1/8 SM. Procedure NA at night.

**MISSED APPROACH:**  
 Climbing left turn to 2000  
 direct PEXUS and hold.

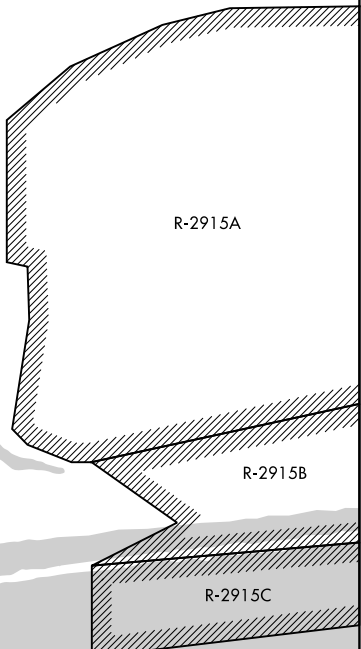
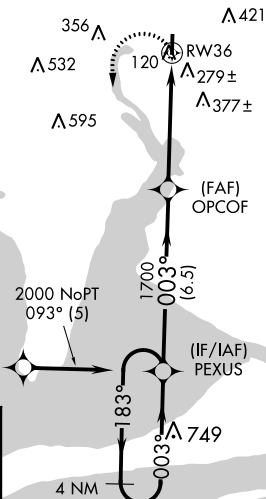
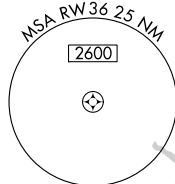
PENSACOLA APP CON  
**124.85 235.775**

GCO  
**121.725**

AUNICOM  
**122.975 (CTAF)**

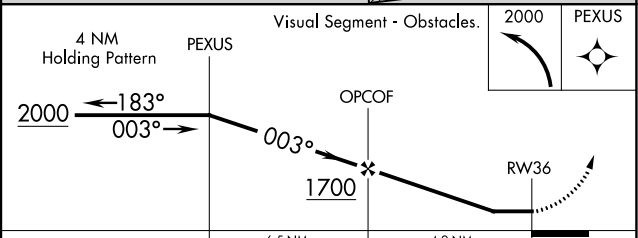
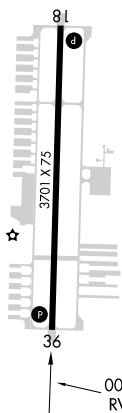


Procedure NA for arrivals at PENSACOLA on V198-241 westbound.



ELEV 82	TDZE 82
---------	---------

MIRL Rwy 18-36  
 REIL Rwys 18 and 36



CATEGORY	A	B	C	D
LNAV MDA	580-1	498 (500-1)	580-1 3/8 498 (500-1 3/8)	NA
CIRCLING	700-1	618 (700-1)	760-2 678 (700-2)	NA

SE-3, 01 DEC 2022 to 29 DEC 2022

SE-3, 01 DEC 2022 to 29 DEC 2022