

WAAS CH <b>63221</b> <b>W17A</b>	APP CRS <b>168°</b>	Rwy Idg TDZE Apt Elev	<b>6300</b> <b>5005</b> <b>5022</b>
--	------------------------	-----------------------------	---

# RNAV (GPS) RWY 17

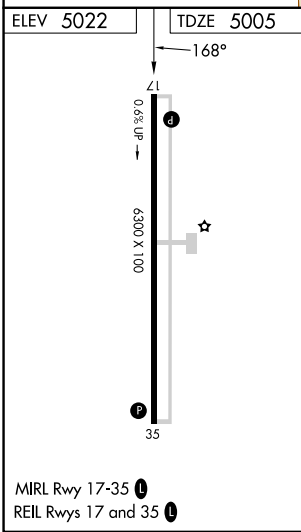
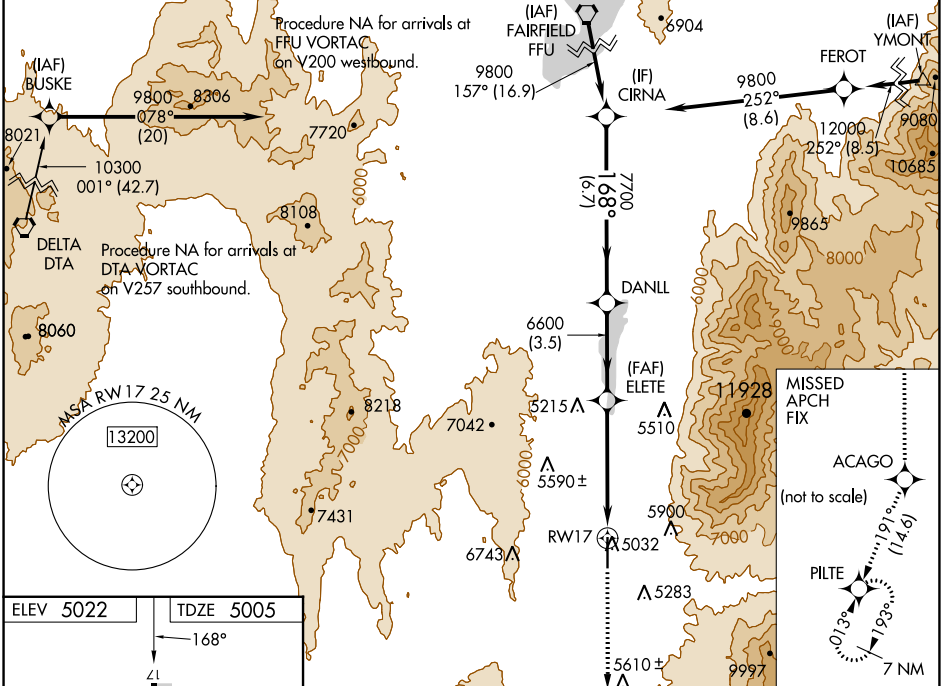
NEPHI MUNI (U14)

RNP APCH - GPS.

**NA** Baro-VNAV NA when using Provo Muni altimeter setting. For uncompensated Baro-VNAV systems, LNAV/VNAV NA below -24°C or above 12°C. When local altimeter setting not received, use Provo altimeter setting: increase LPV DA to 5577 feet and visibility all Cats ½ SM, increase LNAV/VNAV DA to 5836 feet and visibility all Cats ½ SM; increase all MDAs 160 feet and LNAV and Circling visibilities Cats A/B ½ SM. Circling Cat C NA. VDP NA with Provo Muni altimeter setting.

MISSED APPROACH:  
Climb to 11400 direct  
ACAGO and on track  
191° to PILTE and hold.

AWOS-3 <b>118.275</b>	SALT LAKE CENTER <b>127.825 239.025</b>	UNICOM <b>123.075 (CTAF) 0</b>
--------------------------	--	-----------------------------------



11400	ACAGO	↑	tr	PILTE	CIRNA
		191°			
*LNAV only.		*2.4 NM to RW17			
RW17		ELETE	DANLL	CIRNA	
6600		6600	7700	9800	
2.4 NM		2.5 NM	3.5 NM	6.7 NM	
A		B	C	D	
LPV DA	5433-1½		428 (400-1½)		
LNAV/VNAV DA	5692-2½		687 (700-2½)		
LNAV MDA	5800-1 795 (800-1)	5800-1¼ 795 (800-1¼)	5800-2½	795 (800-2½)	
CIRCLING	5800-1 778 (800-1)	5800-1¼ 778 (800-1¼)	6920-3 1898 (1900-3)	NA	

SW-4, 01 DEC 2022 to 29 DEC 2022

SW-4, 01 DEC 2022 to 29 DEC 2022