

APP CRS	Rwy Idg	5000
171°	TDZE	4390
	Apt Elev	4390

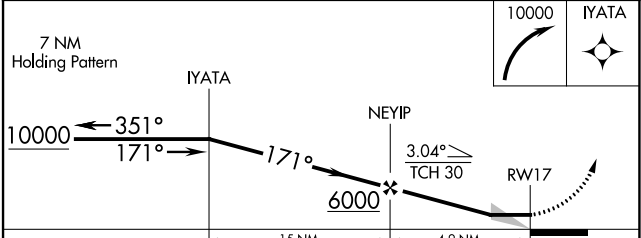
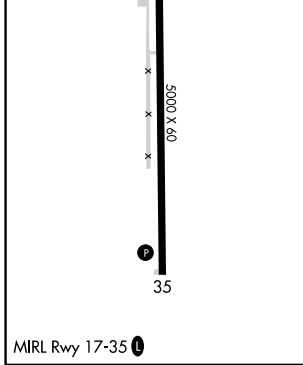
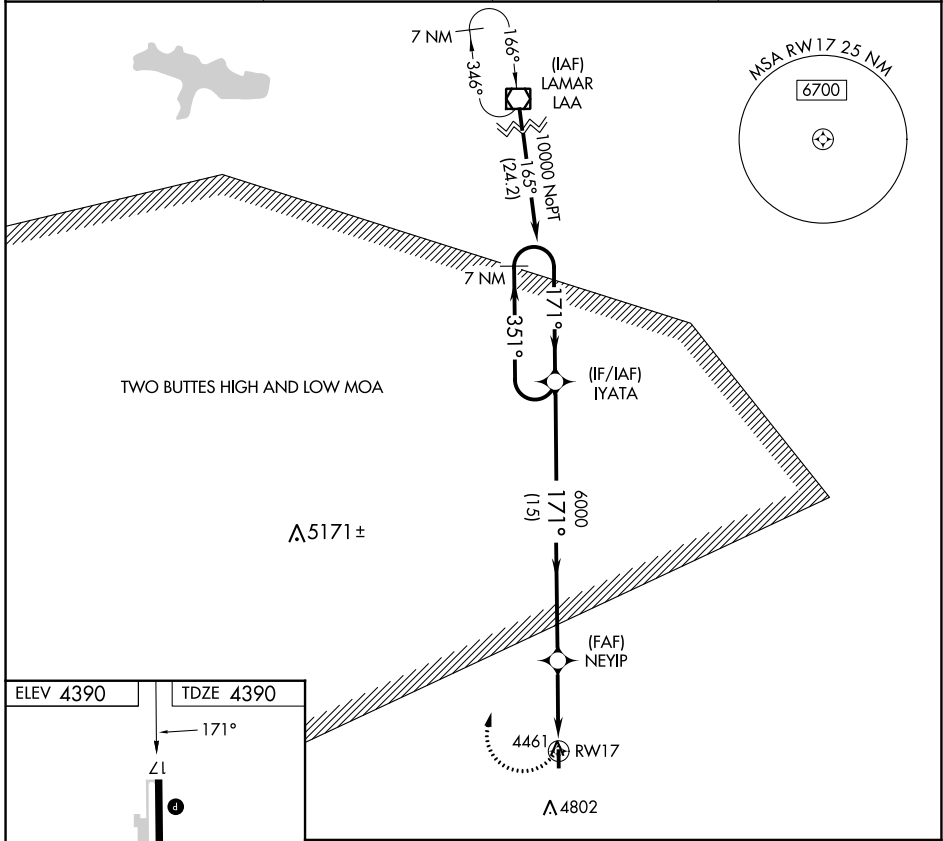
RNAV (GPS) RWY 17

SPRINGFIELD MUNI (8V7)

▼ Use Lamar altimeter setting, if not received use La Junta altimeter setting and increase all MDAs 20 feet. DME/DME RNP-0.3 NA.

▲ NA MISSED APPROACH: Climbing right turn to 10000 direct IYATA and hold, continue climb-in-hold to 10000.

LAA ASOS 135.625	8V7 AWOS-3PT 118.975	DENVER CENTER 133.4 377.175	CTAF 122.9 0
----------------------------	--------------------------------	---------------------------------------	------------------------



CATEGORY	A	B	C	D
LNAV MDA	4960-1	570 (600-1)		NA
CIRCLING	5060-1 670 (700-1)	5080-1 690 (700-1)		NA

SW-1, 01 DEC 2022 to 29 DEC 2022

SW-1, 01 DEC 2022 to 29 DEC 2022