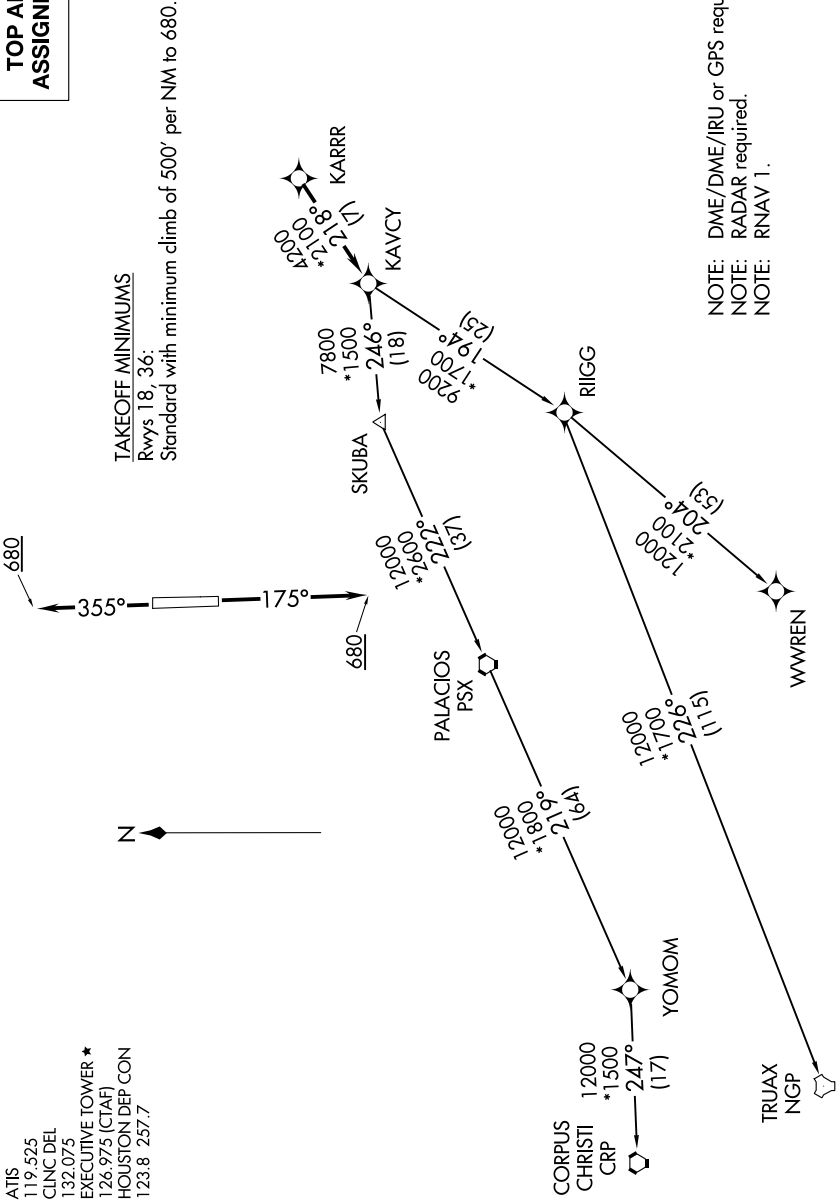


KARR SIX DEPARTURE (RNAV)

**TOP ALTITUDE:
ASSIGNED BY ATC**

TAKEOFF MINIMUMS
Rwys 18, 36:
Standard with minimum climb of 500' per NM to 680.



NOTE: DME/DME/IRU or GPS required.
NOTE: RADAR required.
NOTE: RNAV 1.

NOTE: Chart not to scale.

(NARRATIVE ON FOLLOWING PAGE)