

WAAS CH <b>49004</b> <b>W18A</b>	APP CRS <b>175°</b>	Rwy Idg <b>6610</b> TDZE <b>166</b> Apt Elev <b>166</b>
--	------------------------	---

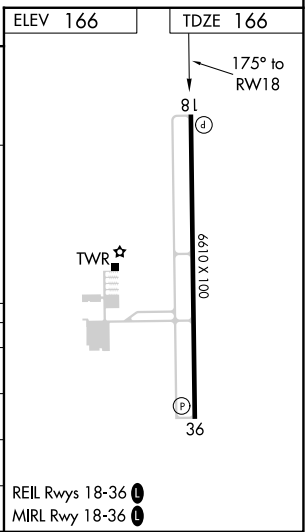
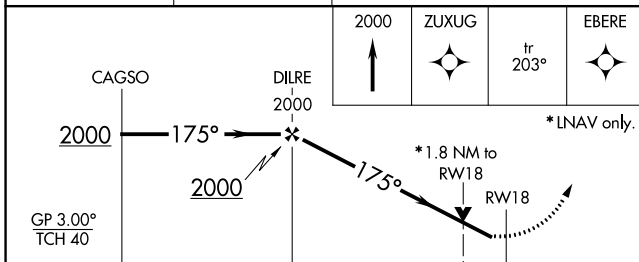
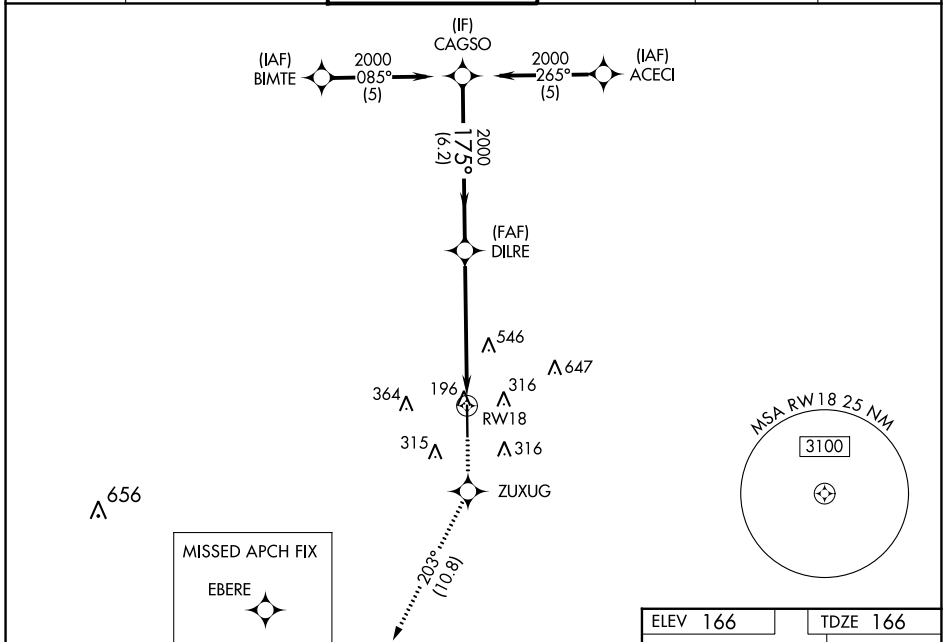
# RNAV (GPS) RWY 18

HOUSTON EXEC (TME)

**⚠** Baro-VNAV NA when using David Wayne Hooks Mem'l altimeter setting. For uncompensated Baro-VNAV systems, LNAV/VNAV NA below -15°C (5°F) or above 48°C (118°F). DME/DME RNP-0.3 NA. VDP NA when using David Wayne Hooks Mem'l altimeter setting. Helicopter visibility reduction below 3/4 SM NA. When local altimeter setting not received, use David Wayne Hooks Mem'l altimeter setting and increase all DA 57 feet and all MDA 60 feet; increase LNAV/VNAV all Cats and LNAV Cat C/D visibility 1/8 mile, and Circling Cat C/D visibility 1/4 mile.

**MISSED APPROACH:**  
Climb to 2000 direct ZUXUG and on track 203° to EBERE and hold.

ATIS <b>119.525</b>	HOUSTON APP CON <b>123.8 257.7</b>	EXECUTIVE TOWER ★ <b>126.975 (CTAF) 0</b>	GND CON <b>132.075</b>	CLNC DEL <b>132.075</b>	UNICOM <b>122.975</b>
------------------------	---------------------------------------	--	---------------------------	----------------------------	--------------------------



CATEGORY	A	B	C	D
LPV DA	416-1 250 (300-1)			
LNAV/VNAV DA	708-2 542 (600-2)			
LNAV MDA	780-1 614 (700-1)	780-1 3/4 614 (700-1 3/4)		
CIRCLING	820-1 654 (700-1)	860-2 694 (700-2)	1000-2 3/4 834 (900-2 3/4)	

REIL Rwy 18-36 **0**  
MIRL Rwy 18-36 **0**

SC-5, 01 DEC 2022 to 29 DEC 2022

SC-5, 01 DEC 2022 to 29 DEC 2022