

WAAS CH <b>97504</b> <b>W36A</b>	APP CRS <b>355°</b>	Rwy Idg <b>6610</b> TDZE <b>164</b> Apt Elev <b>166</b>
--	------------------------	---

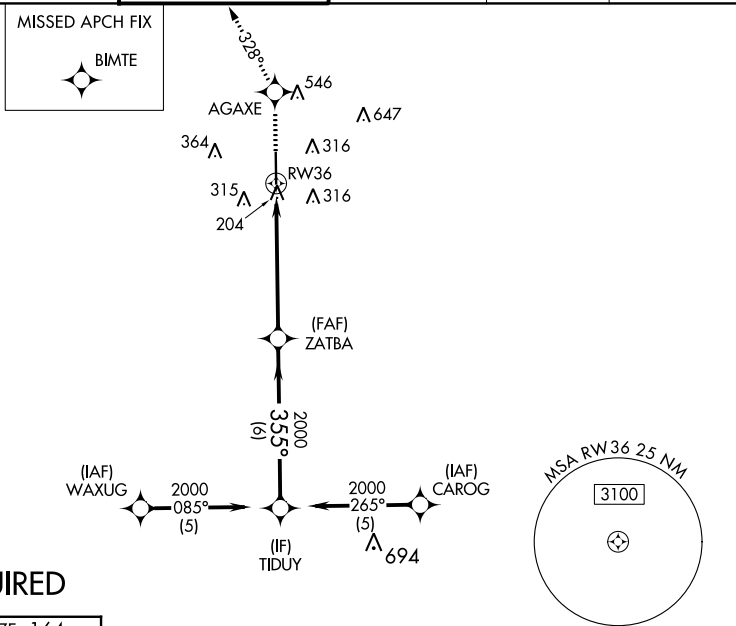
# RNAV (GPS) RWY 36

HOUSTON EXEC (TME)

**⚠** Baro-VNAV NA when using David Wayne Hooks Meml altimeter setting.  
 For uncompensated Baro-VNAV systems, LNAV/VNAV NA below -15°C (5°F) or above 48°C (118°F). DME/DME RNP-0.3 NA. VDP NA when using David Wayne Hooks Meml altimeter setting. When local altimeter setting not received, use David Wayne Hooks Meml altimeter setting and increase LPV DA to 471 feet, LNAV/VNAV DA to 719 feet; increase all MDA 60 feet. Increase LNAV/VNAV visibility ¼ mile all Cats and LNAV and circling Cat C/D ¼ mile.

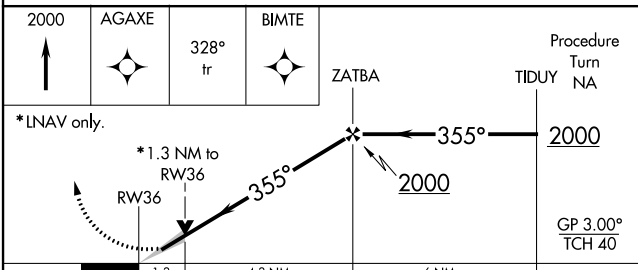
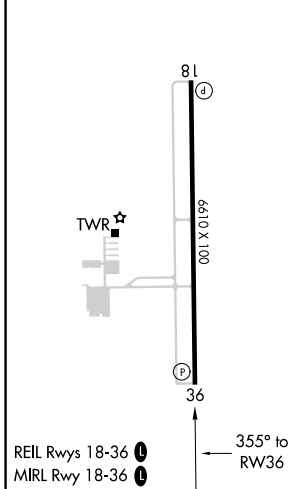
**MISSED APPROACH:** Climb to 2000 direct AGAXE and via 328° track to BIMTE and hold.

ATIS <b>119.525</b>	HOUSTON APP CON <b>123.8 257.7</b>	EXECUTIVE TOWER ★ <b>126.975 (CTAF) 0</b>	GND CON <b>132.075</b>	CLNC DEL <b>132.075</b>	UNICOM <b>122.975</b>
------------------------	---------------------------------------	--	---------------------------	----------------------------	--------------------------



**RADAR REQUIRED**

ELEV <b>166</b>	TDZE <b>164</b>
-----------------	-----------------



CATEGORY	A	B	C	D
LPV DA	414-1 250 (300-1)			
LNAV/VNAV DA	662-1¾ 498 (500-1¾)			
LNAV MDA	620-1	456 (500-1)	620-1¼ 456 (500-1¼)	620-1½ 456 (500-1½)
CIRCLING	820-1	654 (700-1)	860-2 694 (700-2)	1000-2¾ 834 (900-2¾)

SC-5, 01 DEC 2022 to 29 DEC 2022

SC-5, 01 DEC 2022 to 29 DEC 2022