

WAAS CH <b>40232</b> <b>W36A</b>	APP CRS <b>356°</b>	Rwy Idg TDZE Apt Elev	<b>5000</b> <b>1999</b> <b>1999</b>
--	------------------------	-----------------------------	---

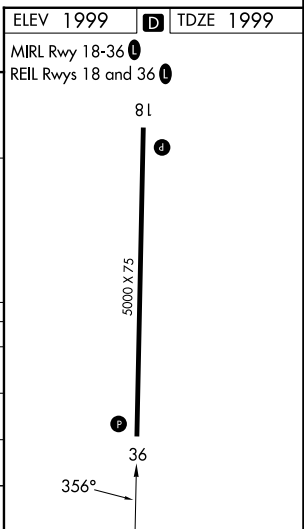
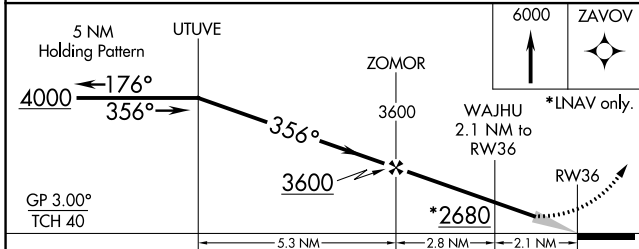
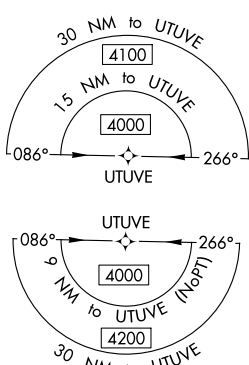
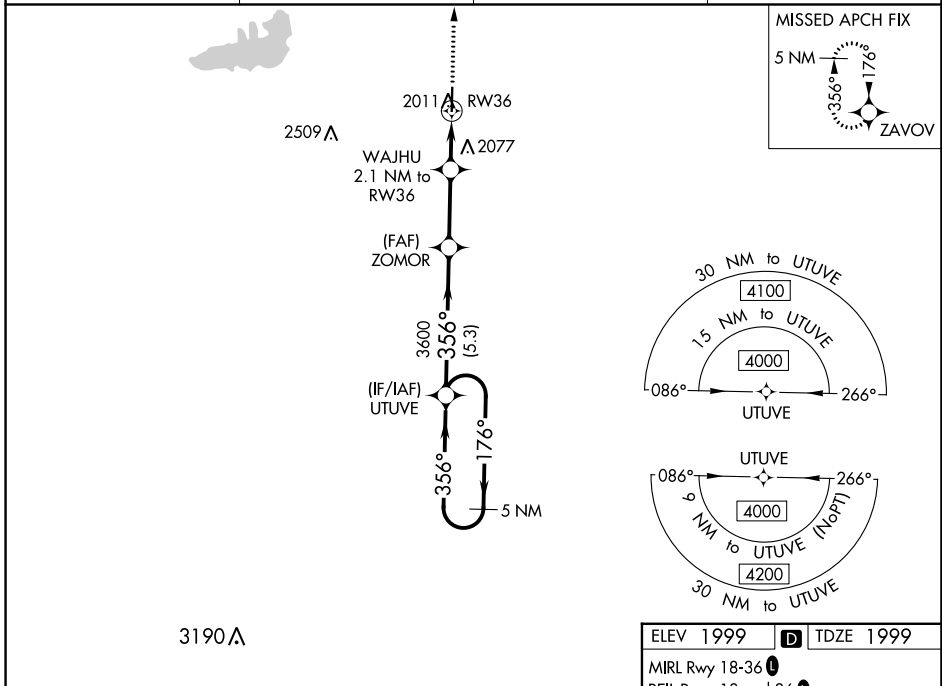
# RNAV (GPS) RWY 36

ROOKS COUNTY RGNL (RCP)

**NA** Baro-VNAV NA. Use Hill City altimeter setting; when not received, use Hays Rgnl altimeter setting. Circling NA west of Rwy 18-36.  
DME/DME RNP-0.3 NA.

MISSED APPROACH: Climb to 6000 direct ZAVOV and hold, continue climb-in-hold to 6000.

AWOS-AV <b>120.075</b>	HLC ASOS <b>118.425</b>	DENVER CENTER <b>132.7 226.675</b>	CTAF <b>122.9</b>
---------------------------	----------------------------	---------------------------------------	----------------------



CATEGORY	A	B	C	D
LPV DA	2290-1 291 (300-1)			NA
LNAV/VNAV DA	2340-1½ 341 (400-1½)			NA
LNAV MDA	2420-1 421 (500-1)		2420-1¼ 421 (500-1¼)	NA
<b>C</b> CIRCLING	2460-1 461 (500-1)	2480-1 481 (500-1)	2500-1½ 501 (600-1½)	NA

NC-2, 01 DEC 2022 to 29 DEC 2022

NC-2, 01 DEC 2022 to 29 DEC 2022