

|  |                        |                             |   |
|--|------------------------|-----------------------------|---|
| WAAS<br>CH <b>45832</b><br><b>W17A</b> | APP CRS<br><b>166°</b> | Rwy Idg<br>TDZE<br>Apt Elev | <b>3400</b><br><b>1246</b><br><b>1246</b> |
|--|------------------------|-----------------------------|---|

# RNAV (GPS) RWY 17

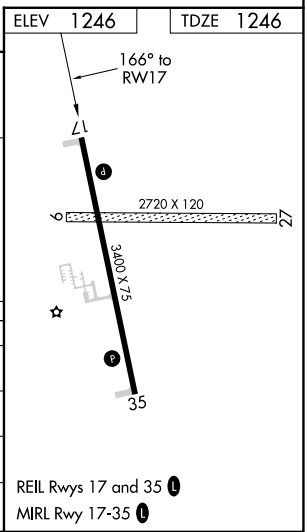
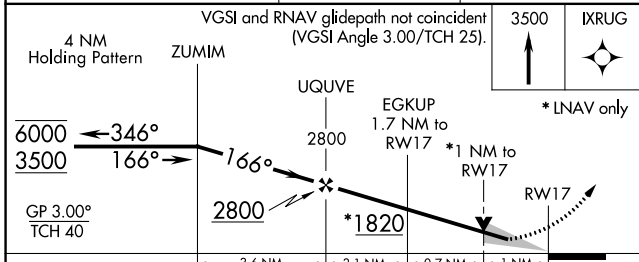
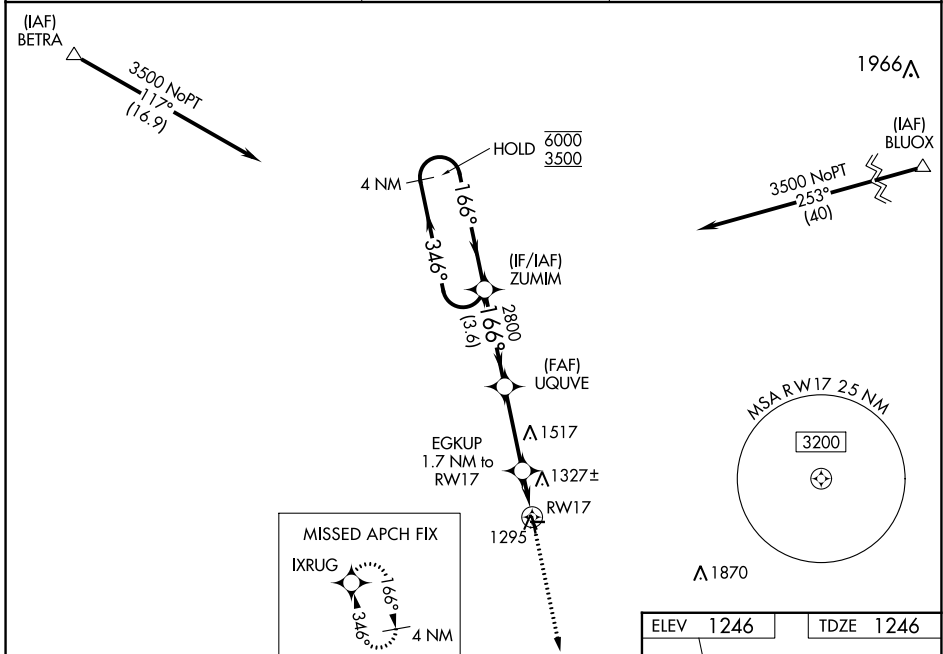
MAHNOMEN COUNTY (3N8)

RNP APCH.

**⚠** Circling NA to Rwy 9 and 27. Baro-VNAV and VDP NA when using Fosston altimeter setting. For uncompensated Baro-VNAV systems, LNAV/VNAV NA below -17°C or above 54°C. When local altimeter setting not received, use Fosston altimeter setting and increase all DA to 1549 feet; increase all MDA 60 feet.

MISSED APPROACH:  
Climb to 3500 direct  
IXRUG and hold.

|                            |   |                      |
|----------------------------|---|----------------------|
| AWOS-3PT<br><b>121.125</b> | MINNEAPOLIS CENTER<br><b>127.35 278.3</b> | CTAF<br><b>122.9</b> |
|----------------------------|---|----------------------|



| CATEGORY          | A                     | B                     | C | D  |
|-------------------|-----------------------|-----------------------|---|----|
| LPV DA            | 1496-1                | 250 (300-1)           |   | NA |
| LNAV/VNAV DA      | 1496-1                | 250 (300-1)           |   | NA |
| LNAV MDA          | 1580-1                | 334 (400-1)           |   | NA |
| <b>C</b> CIRCLING | 1640-1<br>394 (400-1) | 1700-1<br>454 (500-1) |   | NA |

NC-1, 01 DEC 2022 to 29 DEC 2022

NC-1, 01 DEC 2022 to 29 DEC 2022