

APP CRS <b>248°</b>	Rwy Idg <b>1899</b>
	TDZE <b>547</b>
	Apt Elev <b>550</b>

# RNAV (GPS) RWY 25

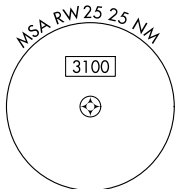
KELLER BROTHERS (Ø8N)

RNP APCH.

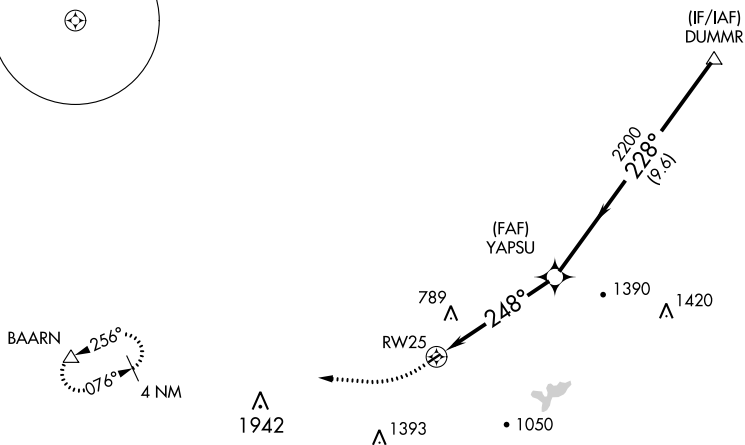
**▼** Procedure NA at night. Rwy 7 helicopter visibility reduction below 1 SM NA.  
**▲NA** Use Lancaster altimeter setting; when not received, use Reading altimeter setting and increase all MDA 40 feet.

MISSED APPROACH: Climbing right turn to 3000 direct BAARN and hold.

LNS ASOS <b>125.675</b>	HARRISBURG APP CON <b>126.45 281.525</b>	CTAF <b>122.9</b>	<b>121.9 0</b>
----------------------------	---	----------------------	----------------



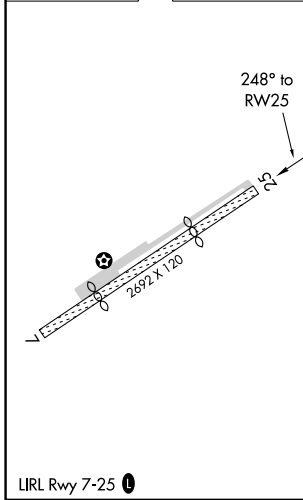
Procedure NA for arrivals at DUMMR on V93 northeast bound, V162 eastbound and V276 southeast bound.



NE-4, 01 DEC 2022 to 29 DEC 2022

NE-4, 01 DEC 2022 to 29 DEC 2022

ELEV 550	TDZE 547
----------	----------



	3000	BAARN	Visual Segment - Obstacles.	DUMMR
		▲		4000
			YAPSU	
			2200	
			248°	228°
			5.1 NM	9.6 NM
CATEGORY	A	B	C	D
LNAV MDA	1320-1 773 (800-1)	1320-1¼ 773 (800-1¼)	NA	
CIRCLING	1440-1¼ 890 (900-1¼)	1580-1½ 1030 (1100-1½)	NA	