

BELOIT

MORITZ MEML (K61) 1 NW UTC-6(-5DT) N39°28.30' W98°07.73'

WICHITA
L-10H
IAP

1418 B NOTAM FILE ICT

RWY 17-35: H4200X75 (CONC) S-30, D-30 PCN 11 R/C/X/U MIRL

RWY 17: PAPI(P2L)—GA 4.0° TCH 40'. Thld dspcd 181'. Road.

RWY 35: PAPI(P2L)—GA 3.0° TCH 40'. Trees.

RWY 04-22: 2340X120 (TURF)

RWY 08-26: 1666X70 (TURF) 0.3% up E

RUNWAY DECLARED DISTANCE INFORMATION

RWY 17: TORA-4200 TODA-4200 ASDA-4200 LDA-4018

RWY 35: TORA-4200 TODA-4200 ASDA-4200 LDA-4200

SERVICE: S4 **FUEL** 100LL, JET A **LGT** ACTIVATE PAPI Rwy 17 and Rwy 35—CTAF.

AIRPORT REMARKS: Attended Mon-Sat 1400-0000Z \ddagger . For fuel after hrs call 785-738-7437. Credit card fueling is avbl 24 hrs. Jet A avbl 24 hrs with credit card. Rwy 04-22 mkd with red and white painted 'L' mkrks at each end with additional reflector raised panels. Radio controlled aircraft operations on and invof arpt weekends and holidays. Pilot lounge avbl 24 hrs.

AIRPORT MANAGER: 785-738-7437

WEATHER DATA SOURCES: AWOS-3 118.225 (785) 534-1141.

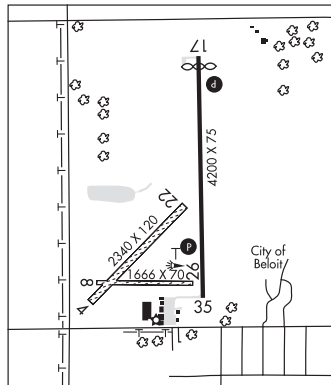
COMMUNICATIONS: CTAF/UNICOM 122.8

Ⓡ **KANSAS CITY CENTER APP/DEP CON** 134.9

CLEARANCE DELIVERY PHONE: For CD ctc Kansas City ARTCC at 913-254-8508.

RADIO AIDS TO NAVIGATION: NOTAM FILE ICT.

MANKATO (L) (L) VORTACW 109.8 **TKO** Chan 35 N39°48.38' W98°15.60' 153° 21.0 NM to fld. 1880/10E.



BENTON

LLOYD STEARMAN FLD (1K1) 1 SW UTC-6(-5DT) N37°46.47' W97°06.79'

WICHITA
H-5C, L-101, 15D
IAP

1364 B NOTAM FILE ICT

RWY 17-35: H5106X75 (ASPH) HIRL 0.3% up N

RWY 17: PAPI(P2L)—GA 3.0° TCH 33'. Thld dspcd 242'. Trees. Rgt tfc.

RWY 35: PAPI(P2L)—GA 3.0° TCH 32'. Trees.

SERVICE: S4 **FUEL** 100LL, JET A **OX** 1, 2, 3, 4 **LGT** ACTVT PAPI Rwys 17 and 35; HIRL Rwy 17-35—CTAF.

AIRPORT REMARKS: Attended 1300-0500Z \ddagger . Fuel 24 hr credit card, for Jet A call arpt manager 316-648-0132. Warbird, antique and helicopter ops on and invof arpt. Uncontrolled vehicle traffic invof hangars and on twys. 70' wide concrete twy turn off added midfield. Acft back taxi on rwy when able. Twin and larger acft back taxi on rwy. Ultralight acft PPR. For assistance after hrs call 316-648-0132 or numbers posted at FBO. Turf operations west of runway.

AIRPORT MANAGER: 316-648-0132

WEATHER DATA SOURCES: AWOS-2 118.3 (316) 530-6004.

COMMUNICATIONS: CTAF/UNICOM 123.075

Ⓡ **WICHITA APP/DEP CON** 134.8

CLNC DEL 125.0

CLEARANCE DELIVERY PHONE: For CD ctc Wichita Apch at 316-350-1520.

RADIO AIDS TO NAVIGATION: NOTAM FILE ICT.

WICHITA (H) (H) VORTACW 113.8 **ICT** Chan 85 N37°44.72'

W97°35.03' 078° 22.5 NM to fld. 1472/7E.

TACAN AZIMUTH unusable:

025°-035° blo 4,000'

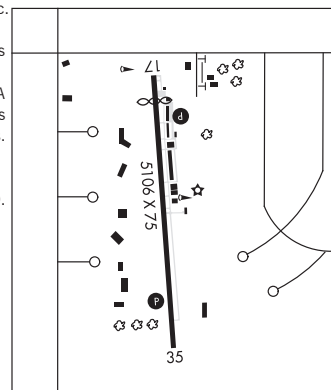
040°-055° byd 20 NM

147°-159° blo 4,900'

VOR unusable:

025°-035° blo 4,000'

147°-159° blo 4,400'



BILOY N39°07.22' W95°41.23' NOTAM FILE TOP.

KANSAS CITY
L-101

NDB (MHW/LOM) 521 **TO** 131° 4.3 NM to Philip Billard Muni. 921/5E. NDB unmonitored.