

HICKORY

HICKORY RGNL (HKY)(KHKY) 3 W UTC-5(-4DT) N35°44.47' W81°23.37'

CHARLOTTE

1190 B Class I, ARFF Index A NOTAM FILE HKY MON Airport

H-9B, 12H, L-25D

RWY 06-24: H6401X150 (ASPH-GRVD) S-120, D-198, 2D-321,

IAF, AD

2D/2D2-766 PCN 56 F/C/W/T HIRL 0.8% up NE

RWY 06: REIL. PAPI(P4L)—GA 3.0° TCH 57'. Trees.

RWY 24: MALSR. PAPI(P4L)—GA 3.0° TCH 54'.

RWY 01-19: H4400X150 (ASPH) S-78, D-104 PCN 30 F/C/X/T

MIRL 0.6% up N

RWY 01: REIL. PAPI(P4L)—GA 3.0° TCH 42'. Tree.

RWY 19: REIL. VASI(V4R)—GA 3.0° TCH 33'.

RUNWAY DECLARED DISTANCE INFORMATION

RWY 06: TORA-6401 TODA-6401 ASDA-6401 LDA-6401

RWY 24: TORA-6401 TODA-6401 ASDA-6401 LDA-6401

SERVICE: S4 FUEL 100LL, JET A OX 1, 2 LGT Dusk-Dawn. ACTVT

MALSR Rwy 24; REIL Rwy 01; PAPI Rwy 06 and 24; HIRL Rwy

06-24; MIRL Rwy 01-19—CTAF (0400-1200Z). Rwy 19 VASI

unusbl byd 5° rgt of crs.

AIRPORT REMARKS: Attended Mon-Fri 1200-0000Z, Sat-Sun

1200-0000Z. Svcs avbl Mon-Fri 0700-2100 lcl, Sat and Sun

0700-1900 lcl, after hrs svcs call 828-514-5638. 100LL avbl after

hrs with credit card. Tkfs Rwy 19 prohibited when twr clsd. No line

of sight btn Rwy 19 and Rwy 24. Rwy 01-19 not avbl for scheduled

acr opns with more than 9 psgr seats or unscheduled acr at least 31 psgr seats. Clsd to unscheduled air carrier ops with

more than 30 pax seats exc 24 hr PPR call arpt mgr 828-323-7408. Rwy 01-19 moderate transverse and longitudinal

cracking; vegetation present in cracking. Rwy 06-24 markings badly faded. Twy B at AER 19 not vsb from the twr. Rwy

06-24 mkgs badly faded.

AIRPORT MANAGER: 828-323-7408

WEATHER DATA SOURCES: ASOS 118.325 (828) 322-2996.

COMMUNICATIONS: CTAF 128.15

Ⓡ ATLANTA CENTER APP/DEP CON 125.15

TOWER 128.15 (1200-0200Z)

GND CON 121.7 CLNC DEL 121.7 CLNC DEL 124.25 (when twr clsd)

AIRSPACE: CLASS D svc 1200-0200Z; other times CLASS E.

VOR TEST FACILITY (VOT) 110.0

RADIO AIDS TO NAVIGATION: NOTAM FILE RDU.

BARRETT'S MOUNTAIN (H) (H) VOR/DME 113.75 BZM Chan 84(Y) N35°52.13' W81°14.43' 230° 10.6 NM to fld.

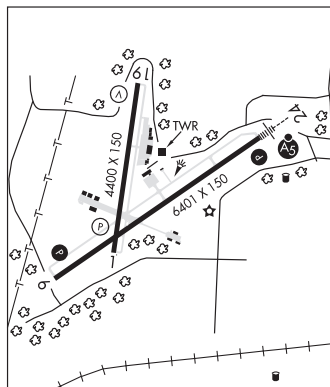
1880/6W.

VOR unusable:

030°-040° byd 15NM blo 8,500'

TAWBA NDB (MHW/LOM) 332 HK N35°47.19' W81°18.32' 243° 4.9 NM to fld. 986/6W. NOTAM FILE HKY.

ILS 108.7 I-HKY Rwy 24. Class OF IE. LOM TAWBA NDB. Unmonitored when ATCT is clsd



WILSON'S (E40) 4 S UTC-5(-4DT) N35°39.12' W81°21.47'

ATLANTA

985 NOTAM FILE RDU

RWY 17-35: 2175X70 (TURF)

RWY 17: Trees.

RWY 35: Trees.

AIRPORT REMARKS: Unattended. Arpt open dalgt hrs only. 130' AGL unmarked p-lines 1000' N and E of rwy. Winds permitting

take off Rwy 17 and land Rwy 35. Rwy 17-35 mrd with yellow cones. Last half of Rwy 17 slopes downhill—thld of Rwy

35 is 6' lower than thld of Rwy 17. Rwy 35 slopes uphill. Rwy 35 landing aircraft will turn final north of power

transmission lines, aircraft on straight-in approach will remain above 1700 ft MSL until north of pwr lines. Aircraft

departing southbound climb to 1700 ft MSL by power lines or initiate a crosswind turn before reaching power lines.

AIRPORT MANAGER: 828-217-3320

COMMUNICATIONS: CTAF 122.9

CLEARANCE DELIVERY PHONE: For CD ctc Atlanta ARTCC at 770-210-7692.

HINSHAW (GREENACRES) (See LIBERTY on page 313)