

ROCKY MOUNT/WILSON RGNL (RWI)(KRWI) 7 SW UTC-5(-4DT) N35°51.38' W77°53.52' CHARLOTTE
 158 B ARFF Index—See Remarks NOTAM FILE RWI H-9C, 12H, L-35B, 36G
 RWY 04-22: H7099X150 (ASPH-GRVD) S-101, D-162 IAP

PCN 40 F/B/X/T HIRL
 RWY 04: MALSR. PAPI(P4L)—GA 3.0° TCH 41'.
 RWY 22: REIL. PAPI(P4L)—GA 3.0° TCH 42'. Trees.

RUNWAY DECLARED DISTANCE INFORMATION
 RWY 04: TORA-7100 TODA-7100 ASDA-7100 LDA-7100
 RWY 22: TORA-7100 TODA-7100 ASDA-6900 LDA-6900

SERVICE: S4 FUEL 100LL, JET A 0X1 LGT Actvt MALSR Rwy 04; REIL Rwy 22; HIRL Rwy 04-22—CTAF.

AIRPORT REMARKS: Attended Mon-Fri 1100-0100Z†, Sat-Sun 1300-2300Z†. Class IV, ARFF Index A. Clsd to acr opns with more than 30 psgr seats excp 24 hr PPR call amgr 252-446-7057.

AIRPORT MANAGER: 252-446-7057

WEATHER DATA SOURCES: ASOS 118.875 (252) 446-0732.

COMMUNICATIONS: CTAF/UNICOM 123.05

RCO 122.2 (RALEIGH RADIO)

Ⓜ WASHINGTON CENTER APP/DEP CON 123.85

CLEARANCE DELIVERY PHONE: For CD if una to ctc on FSS freq, ctc Washington ARTCC at 703-771-3587.

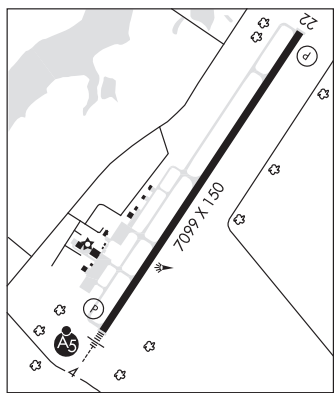
AIRSPACE: CLASS E svc 1300-2300Z†; other times CLASS G.

RADIO AIDS TO NAVIGATION: NOTAM FILE RDU.

TAR RIVER (VL) (H) VORTAC 117.8 TYI Chan 125 N35°58.60' W77°42.22' 237° 11.7 NM to fld. 73/5W.

VOR unusable:
 253°-257° byd 40 NM
 299°-318° byd 40 NM

ILS 108.3 I-RWI Rwy 04. Class IA. Unmonitored.



ROVDY N35°43.99' W80°29.37' NOTAM FILE RUQ. CHARLOTTE
 NDB (LOMW) 275 RU 202° 5.4 NM to Mid-Carolina Rgnl. 700/6W. L-25D, 36F

ROWLAND

ADAMS (8NC) 3 NE UTC-5(-4DT) N34°34.57' W79°14.93' CHARLOTTE
 143 NOTAM FILE RDU

RWY 01-19: 3600X80 (TURF)
 RWY 01: Trees.
 RWY 19: Trees.

AIRPORT REMARKS: Unattended. Deer and wildlife invof arpt. Rwy ends mkd with yellow cones.

AIRPORT MANAGER: 910-374-9191

COMMUNICATIONS: CTAF 122.9

CLEARANCE DELIVERY PHONE: For CD ctc Washington ARTCC at 703-771-3587.