

COLORADO SPRINGS

CITY OF COLORADO SPRINGS MUNI (COS)(KCOS) P (AF AFRC) 6 SE UTC-7(-6DT) N38°48.35'

DENVER

H-3F, 5A, L-10F

IAP, AD

W104°42.05'

6187 B LRA Class I, ARFF Index C NOTAM FILE COS

RWY 17L-35R: H13500X150 (CONC-GRVD) S-120, D-250, 2S-175, 2D-550, 2D/2D2-1120 PCN 95 R/B/W/T HIRL CL

RWY 17L: MALS.R. TDZL. PAPI(P4L)—GA 3.0° TCH 57'. RVR-TR 0.6% down.

RWY 35R: TDZL. REIL. PAPI(P4R)—GA 3.0° TCH 71'. RVR-TR 0.6% up.

RWY 17R-35L: H11022X150 (ASPH-GRVD) S-120, D-250, 2S-175, 2D-550, 2D/2D2-1120 PCN 99 F/B/X/T HIRL

RWY 17R: REIL. PAPI(P4L)—GA 3.0° TCH 55'. RVR-TR 1.2% down.

RWY 35L: MALS.R. PAPI(P4L)—GA 3.0° TCH 72'. RVR-TR 1.2% up.

RWY 13-31: H8270X150 (ASPH-GRVD) S-120, D-171, 2S-175, 2D-279, 2D/2D2-691 PCN 48 F/C/X/T MIRL

RWY 13: REIL. PAPI(P4R)—GA 3.0° TCH 64'. 0.3% down..

RWY 31: REIL. PAPI(P4L)—GA 3.04° TCH 52'. Thld dspcd 56'. Hill.

0.5% up..

LAND AND HOLD—SHORT OPERATIONS

LDG RWY	HOLD—SHORT POINT	AVBL LDG DST
RWY 31	17R-35L	7450
RWY 35L	13-31	10250

RUNWAY DECLARED DISTANCE INFORMATION

RWY 13: TORA-8270 TODA-8270 ASDA-8270 LDA-8270
 RWY 17L:TORA-13501 TODA-13501 ASDA-13501 LDA-13501
 RWY 17R:TORA-11022 TODA-11022 ASDA-11022 LDA-11022
 RWY 31: TORA-8270 TODA-8270 ASDA-8270 LDA-7914
 RWY 35L:TORA-11022 TODA-11022 ASDA-11022 LDA-11022
 RWY 35R:TORA-13501 TODA-13501 ASDA-13501 LDA-13501

SERVICE: S4 FUEL 100LL, JET A 0X1 LGT ACTVT REIL Rwy 13 and Rwy 31, 17R—Ctc COS twr. Lgt'd windsock apch Rwys 17L-35R, 17R-35L and 13-31. MILITARY— JASU 2(MA32A-60A), 2(MA32-86A), 2(AM32A-95), 1(SGNC), 2(B809D-Generators). FUEL A+ +(MIL). A, A+ (C719-591-2288.) (NC-100LL) FLUID PRESAIR LHOX; LOX-LOX and hi pressure air ltd. OIL 0-133-148-156(Mil) TRAN ALERT PPR rqr for all tran act—ctc afld mgmt DSN 834-4778/9 C719-556-4778/9. Afld mgmt opr 1300-0500Z±, clsd hol. Fort Carson arrival/departure air control group (ADACG) MSN, ctc DSN 532-8002/3 or C719-503-8002/3. All tran act ctc High Country 30 min prior to arr. Tran act ctc 21 SW Colorado Springs Rgnl Comd post (callsign: HIGH COUNTRY) with ATA and ATD.

AIRPORT REMARKS: Attended continuously. Waterfowl and migratory bird activity on and invof arpt. Acft transporting hazard cargo ctc afld mgmt on 318.05 30 minutes prior to arrival. Turbojet trng fits prohibited 0600-1300Z±. B52 ops prohibited. GA ramp between Twys A3 and A4 clsd to acft with wingspan more than 135'. Be alert; intensive USAF student trng invof Colorado Springs and Pueblo Colorado. Portions of Twys A, B, E, F, G, and M are blocked from view from the twr by obst. Portions of Twy C and Rwy 17R-35L are blocked from view from the twr when the infield mil operation scf is occupied by a C17 or C5. Insufficient twy corner fillets pavement for cntrln twy for acft with wingspans greater than 117' at Twys A2, A3, A4, B2, and B3. When crossing Rwy 17R-35L from A1 to B1 or B1 to A1, be aware you will not see A1 or B1 depending on direction crossing until you crest Rwy 17R-35L. When crossing from A1 to B1 travel northeast and from B1 to A1 travel southwest. These acft should use judgmental oversteer at those twys. Due to limited prkg and potential to dmg lgt, unsecured acft, mobility acft are not permitted to use Colorado Springs FBO unless FBO can guarantee sufficient prkg clnc that blast fm eng thrust and reverse thrust will not impact otr acft, gnd psnl, or eqpt. Cstms avbl for all mil/civ actc. Ctc US Customs 719-574-6607. See Special Notices—USAF 306 FTG Flight Training Areas, Vicinity of Colorado Springs and Pueblo Colorado.

AIRPORT MANAGER: (719) 550-1900

WEATHER DATA SOURCES: ASOS 125.0 (719) 380-6748. LLWAS.

COMMUNICATIONS: ATIS 125.0 719-596-7040 UNICOM 122.85 (Ltd to Peterson Ramp Only)

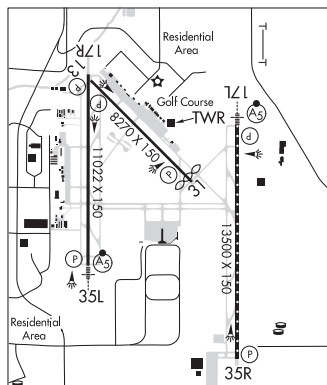
BLACK FOREST RCO 122.25 (DENVER RADIO)

SPRINGS APP CON 120.6 124.0

SPRINGS TOWER 119.9 133.15 GND CON 121.7 CLNC DEL 134.45

SPRINGS DEP CON 124.0

AIRSPACE: CLASS C svc ctc APP CON.



CONTINUED ON NEXT PAGE

CONTINUED FROM PRECEDING PAGE

VOR TEST FACILITY (VOT) 110.4

RADIO AIDS TO NAVIGATION: NOTAM FILE DEN.

BLACK FOREST (VH) (DH) VOR/DME 112.5 BRK Chan 72 N38°56.67' W104°38.01' 193° 8.9 NM to fld. 6935/8E.

VOR unusable:

- 046°-109° byd 40NM
- 110°-120° byd 40 NM blo 9,000'
- 110°-120° byd 50 NM
- 121°-132° byd 40 NM
- 133°-149° byd 40 NM blo 7,000'
- 133°-149° byd 50 NM blo 8,500'
- 133°-149° byd 54 NM
- 150°-165° byd 40 NM
- 180°-187° byd 40 NM blo 7,400'
- 180°-187° byd 46 NM
- 188°-197° byd 40 NM
- 198°-208° byd 40 NM blo 16,300'
- 198°-208° byd 48 NM
- 209°-272° byd 40 NM
- 273°-283° byd 40 NM blo 15,000'
- 273°-283° byd 60 NM
- 284°-359° byd 40 NM
- 305°-045° byd 10 NM blo 13,000'
- 305°-045° byd 26 NM

DME unusable:

- 210°-230° byd 30 NM blo 17,000'
- 230°-250° byd 30 NM blo 17,900'
- 250°-267° byd 30 NM blo 17,000'
- 305°-045° byd 27 NM blo 13,000'
- 330°-045° byd 20 NM blo 10,500'

PETEEY NDB (MHW/LOM) 407 CO N38°41.66' W104°42.98' 358° 6.7 NM to fld. 5574/8E. NOTAM FILE COS.

ILS/DME 109.1 I-LPI Chan 28 Rwy 17L. Class IIE.

ILS 109.9 I-COS Rwy 35L. Class IIE. LOC unusable byd 25° left of course; byd 8NM 10° left of course. Glideslope tch is higher than std.

ILS/DME 109.1 I-AHI Chan 28 Rwy 35R. Class IE. LOC front course unusable byd 15° left of course byd 8 NM due to military restricted airspace.

COMM/NAV/WEATHER REMARKS: Wx opr 24 hrs, incl hol; ctc DSN 834-4337.