

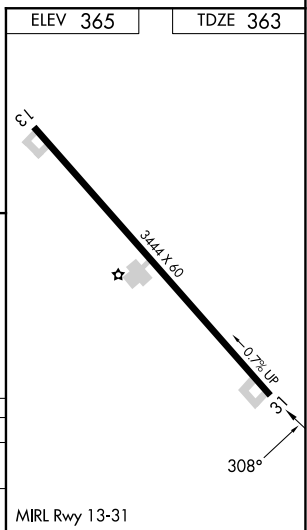
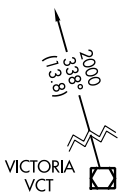
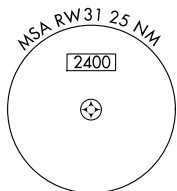
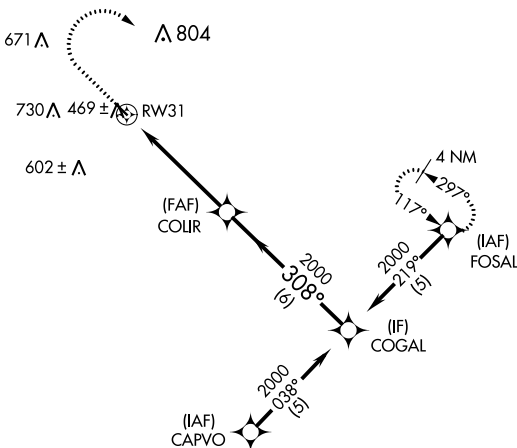
APP CRS	Rwy Idg	3444
308°	TDZE	363
	Apt Elev	365

RNAV (GPS) RWY 31

YOAKUM MUNI (T85)

RNP APCH-GPS.	MISSED APPROACH: Climb to 1000 then climbing right turn to 2000 direct FOSAL and hold.
▼ Use Victoria Rgnl altimeter setting. Procedure NA at night.	
▲ NA Rwy 31 helicopter visibility reduction below 3/4 SM NA.	

VCT ASOS 119.025	HOUSTON CENTER 132.8 343.7	CTAF 122.9
----------------------------	--------------------------------------	----------------------



1000	2000	FOSAL	COLR	COGAL	
↑	↷	✧	✧	✧	
RW31		308°		2000	Procedure Turn NA
5 NM		3.04° TCH 45		6 NM	
CATEGORY	A	B	C	D	
RNAV MDA	840-1	477 (500-1)	840-1 1/4 477 (500-1 1/4)	NA	
CIRCLING	920-1	555 (600-1)	1200-2 1/2 835 (900-2 1/2)	NA	

SC-3, 29 DEC 2022 to 26 JAN 2023

SC-3, 29 DEC 2022 to 26 JAN 2023