


LOC/DME I-BTR 110.3 Chan 40	APP CRS 133°	Rwy Idg 6407 TDZE 67 Apt Elev 70
--	------------------------	---

ILS or LOC RWY 13

BATON ROUGE METRO, RYAN FLD (BTR)

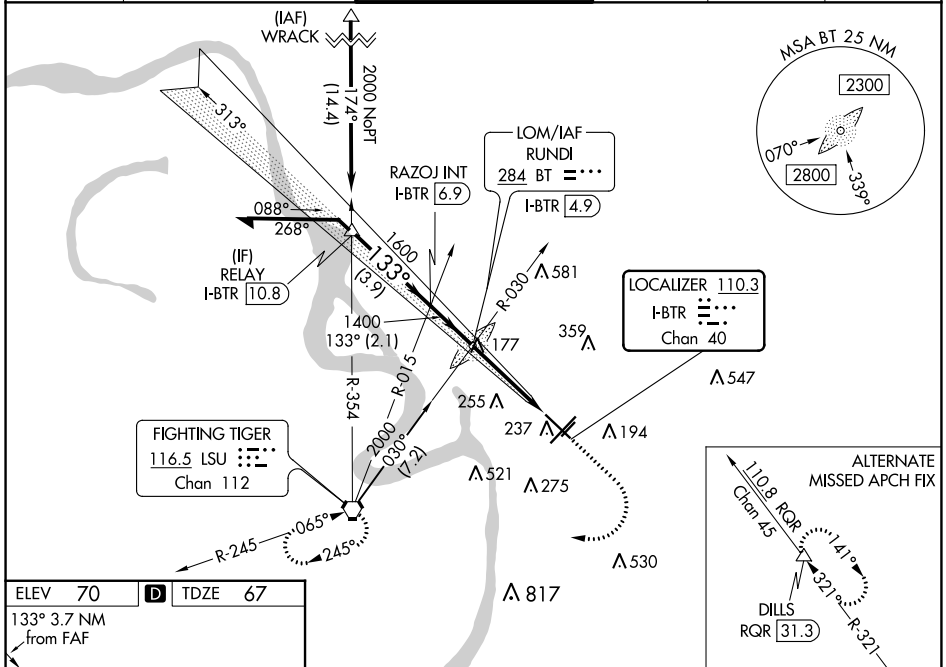
ASR For inop MALS/R when using Hammond altimeter setting, increase S-ILS 13 all Cats visibility to 3/8 mile, and S-LOC 13 visibility to 1/8 mile. VDP NA with Hammond altimeter setting. When local altimeter setting not received, use Hammond altimeter setting and increase all DA 91 feet and all MDA 100 feet, increase S-LOC 13 Cats C and D visibility 1/4 mile, increase Circling Cats C and D visibility 1/4 mile. For inop MALS/R, increase S-LOC 13 Cats C and D to 1/8 mile.

MALS/R



MISSED APPROACH:
Climb to 700 then climbing right then to 2000 direct LSU VORTAC and hold.

ATIS 125.2	BATON ROUGE APP CON * 120.3 278.3	RYAN TOWER * 118.45 (CTAF) 257.8	GND CON 121.9	CLNC DEL 119.4	UNICOM 122.95
----------------------	---	--	-------------------------	--------------------------	-------------------------



ELEV 70 TDZE 67

133° 3.7 NM from FAF

258

TWR 185

TDZ/CL Rwy 22R
HIRL Rwy 13-31 and 4L-22R
MIRL Rwy 4R-22L

FAF to MAP 3.7 NM

Knots	60	90	120	150	180
Min:Sec	3:42	2:28	1:51	1:29	1:14

Remain within 10 NM

RUNDI LOM/INT I-BTR 4.9

313°

2000

1600

133°

1400

GS 3.00° TCH 57

2.1 NM

2.7 NM

1 NM

700 2000 LSU

*LOC only.

Use I-BTR DME when on the localizer course.

* I-BTR 2.2

I-BTR 1.1

CATEGORY	A	B	C	D
S-ILS 13		267-1/2	200 (200-1/2)	
S-LOC 13	480-1/2	413 (500-1/2)	480-3/4	413 (500-3/4)
CIRCLING	560-1 490 (500-1)	660-1 590 (600-1)	780-2 710 (800-2)	840-2 1/2 770 (800-2 1/2)

SC-4, 26 JAN 2023 to 23 FEB 2023

SC-4, 26 JAN 2023 to 23 FEB 2023