




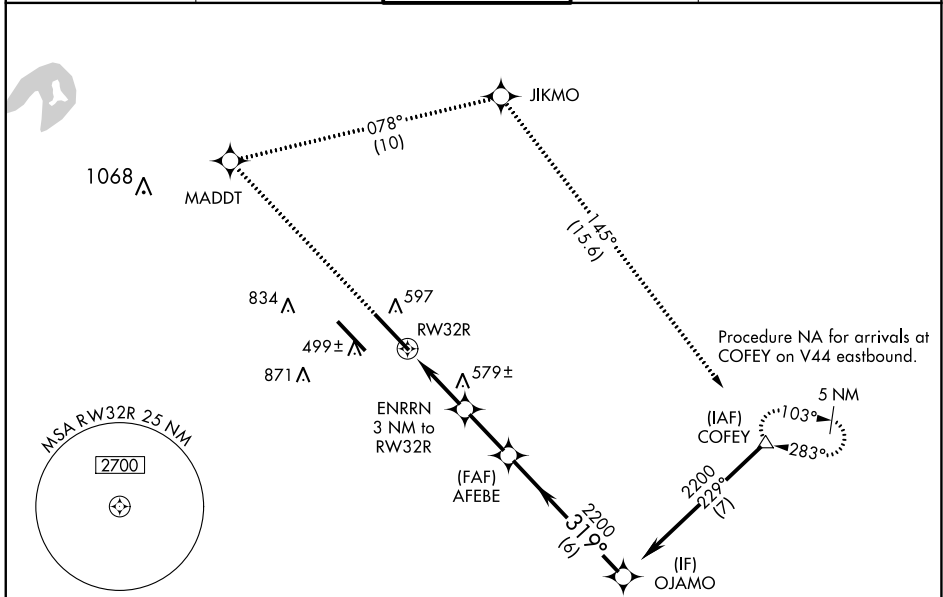
WAAS CH <b>50518</b> <b>W32A</b>	APP CRS <b>319°</b>	Rwy Idg <b>10000</b> TDZE <b>442</b> Apt Elev <b>459</b>
--	------------------------	--


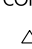
# RNAV (GPS) RWY 32R

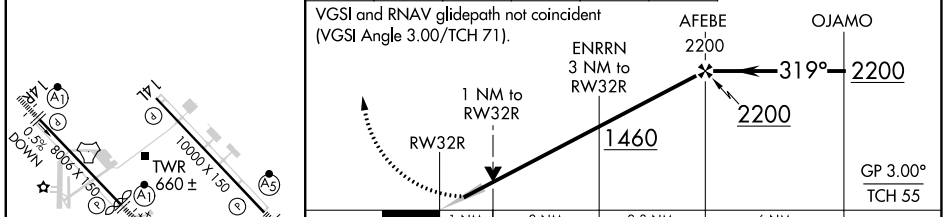
SCOTT AFB/MIDAMERICA ST LOUIS (BLV)

RNP APCH - GPS.		MALSR	MISSED APPROACH: Climb to 2300 direct MADDT and right turn on track 078° to JIKMO and on track 145° to COFEY and hold.
 For uncompensated Baro-VNAV systems, procedure NA below -18°C or above 54°C.  ASR For inop ALS, increase LNAV/VNAV all Cats visibility to RVR 5500.			

ATIS ★ <b>128.7 256.7</b>	ST LOUIS APP CON <b>125.2 281.5</b>	SCOTT TOWER <b>128.25 253.5</b>	GND CON <b>119.2 275.8</b>	CLNC DEL <b>119.875 263.025</b>
------------------------------	--	------------------------------------	-------------------------------	------------------------------------



ELEV 459	<b>D</b>	TDZE 442	2300	MADDT	JIKMO	COFEY	
			↑		tr 078°	tr 145°	



CATEGORY	A	B	C	D
LPV DA	642/24 200 (200-½)			
LNAV/VNAV DA	804/35 362 (400-⅝)			
LNAV MDA	840/24	398 (400-½)	840/35	398 (400-⅝)
<b>C</b> CIRCLING	1000-1 541 (600-1)	1120-1 661 (700-1)	1240-2¼ 781 (800-2¼)	1240-2½ 781 (800-2½)

REIL Rwy 14L  
HIRL Rwy 14R-32L and 14L-32R

EC-3, 26 JAN 2023 to 23 FEB 2023

EC-3, 26 JAN 2023 to 23 FEB 2023