

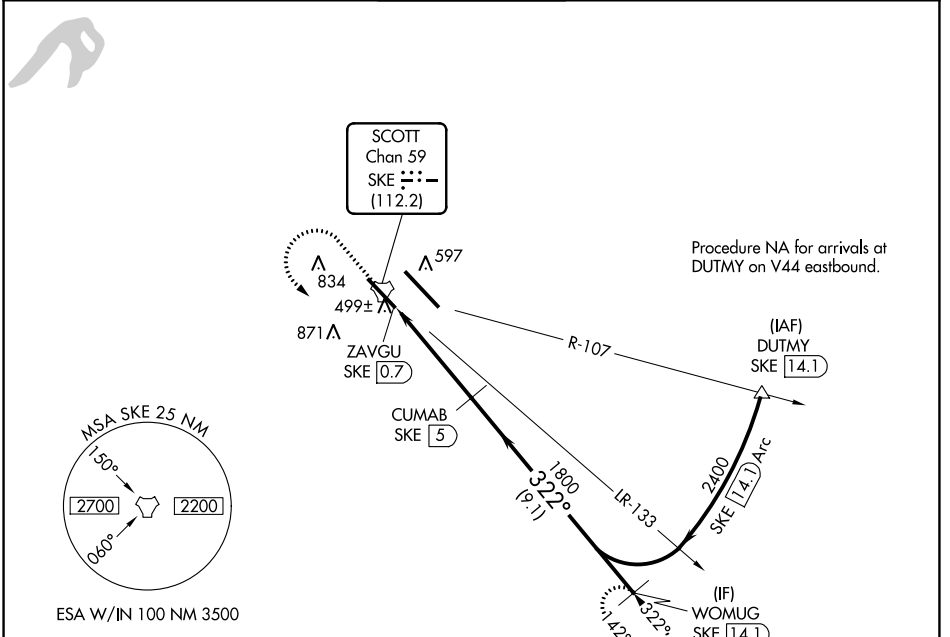
TACAN SKE Chan 59 (112.2)	APP CRS 322°	Rwy ldg TDZE Apt Elev	7822 439 459
--	------------------------	-----------------------------	---

TACAN RWY 32L

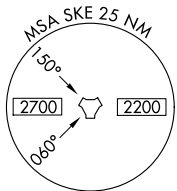
SCOTT AFB/MIDAMERICA ST LOUIS (BLV)

 ASR	For inop ALS, increase S-32L Cat C/D/E visibility to 1½ SM.	 ALSF-1	MISSED APPROACH: Climb to 1500 then climbing left turn to 2400 on SKE R-142 to WOMUG/14.1 DME and hold.

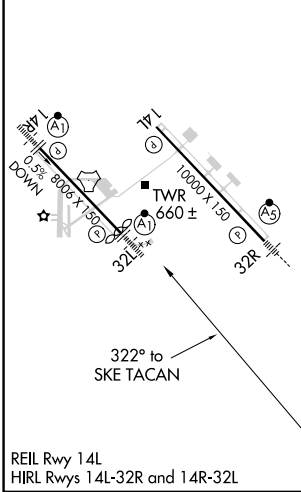
ATIS ★ 128.7 256.7	ST LOUIS APP CON 125.2 281.5	SCOTT TOWER 128.25 253.5	GND CON 119.2 275.8	CLNC DEL 119.875 263.025
------------------------------	--	------------------------------------	-------------------------------	------------------------------------



Procedure NA for arrivals at DUTMY on V44 eastbound.



ELEV 459	D	TDZE 439
-----------------	----------	-----------------



REIL Rwy 14L
HIRL Rwy 14L-32R and 14R-32L

 1500	 2400	 WOMUG SKE 14.1	VGSIs and descent angles not coincident (VGSIs Angle 3.00/TCH 50).				
			 CUMAB SKE 5				
 ZAVGU SKE 0.7		 SKE 2		 2400			
 2.81° TCH 72		 1800					
 1.4 NM		 3 NM		 9.1 NM			
CATEGORY	A	B	C	D	E		
S-32L	920/24	481 (500-½)	920/50	481 (500-1)	920/60 481 (500-1¼)		
<input checked="" type="checkbox"/> CIRCLING	1000-1 541 (600-1)	1120-1 661 (700-1)	1240-2¼ 781 (800-2¼)	1240-2½ 781 (800-2½)	1240-2¾ 781 (800-2¾)		

TACAN RWY 32L

EC-3, 26 JAN 2023 to 23 FEB 2023

EC-3, 26 JAN 2023 to 23 FEB 2023