

TACAN RWY 22

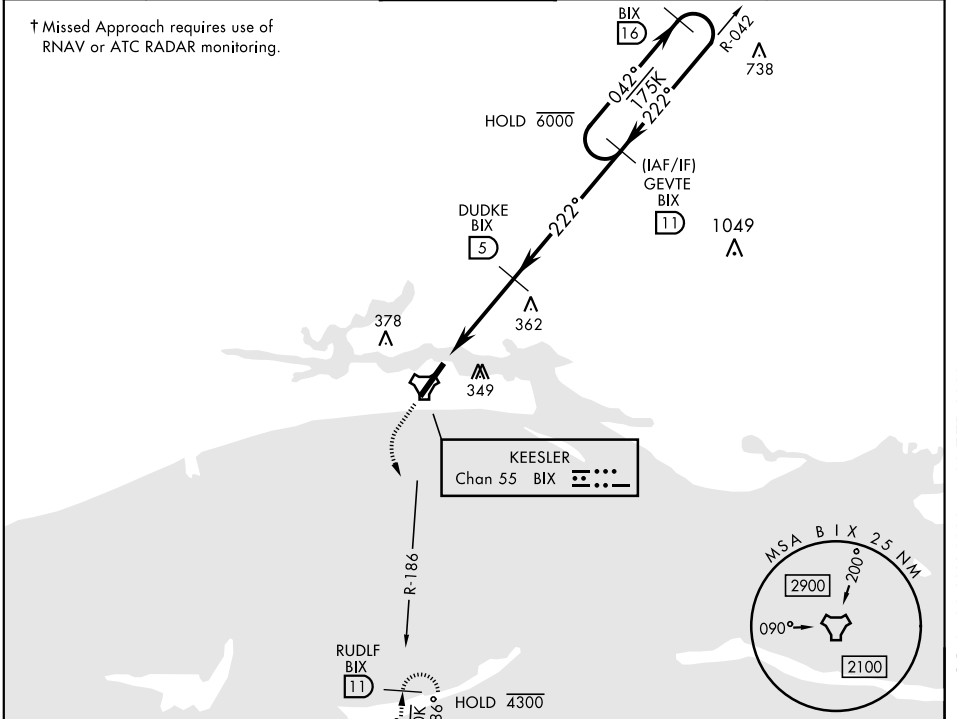
TACAN BIX Chan 55	APCH CRS 222°	Rwy ldg 6630 THRE 17 Arprt Elev 33	AL-49 [USAF]	KEESLER AFB (KBIX)
----------------------	------------------	--	--------------	--------------------

▽ * When ALS inop, increase CAT AB RVR to 55, vis to 1 mile; CAT CD vis to 1¼ miles.

ALSF-1

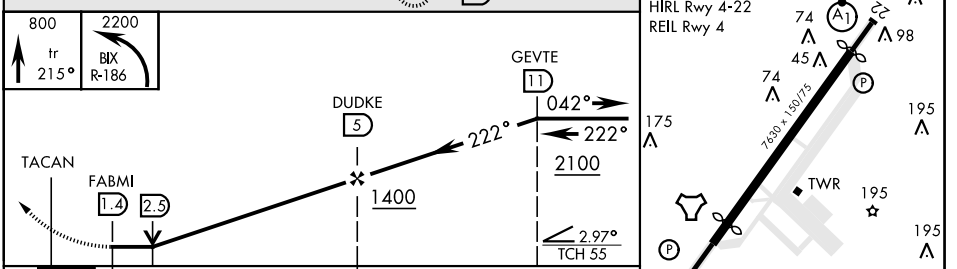
↑ MISSED APPROACH: Climb to 800 tracking 215°, then turn left to intercept BIX R-186 to 11 DME (RUDLF) climbing to 2200 and hold.

ATIS 281.55	GULFPORT APP CON 124.6 354.1 (130°-309°) 127.5 254.25 (310°-129°)	KEESLER TOWER * 120.75 269.075	GND CON 121.8 275.8	CLNC DEL 121.8 275.8
----------------	---	-----------------------------------	------------------------	-------------------------



EMERG SAFE ALT 100 NM 3100

ELEV 33	THRE 17
Rwy 4 ldg 6030'	222° to TACAN
Rwy 22 ldg 6630'	69' Δ
HIRL Rwy 4-22	74' Δ
REIL Rwy 4	45' Δ
	74' Δ
	195' Δ
	195' Δ
	195' Δ



CATEGORY	A	B	C	D
S-22*	620/40 603 (600-¾)	620-1½ 603 (600-1½)	680-1¼	680-2
Ⓞ CIRCLING	587 (600-1)	627 (700-1)	647 (700-1¾)	647 (700-2)

Rwy 22 2000' non-std apch lgt system

TACAN RWY 22