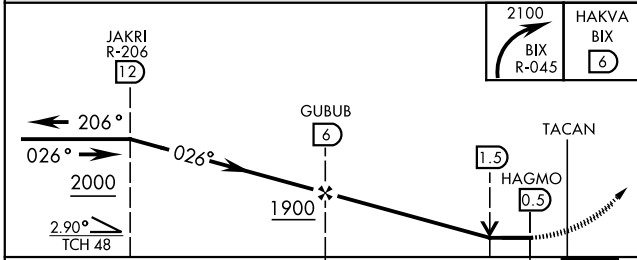
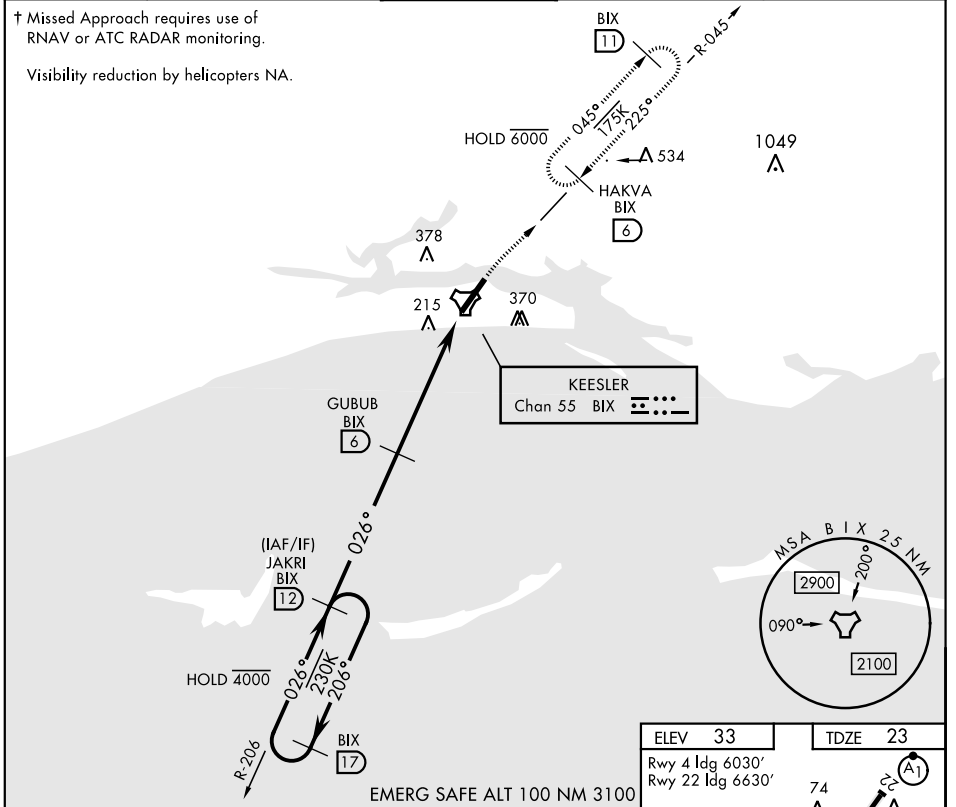


# TACAN RWY 4

TACAN BIX Chan 55	APCH CRS 026°	Rwy ldg TDZE 23 Arprt Elev 33	AL-49 [USAF]	KEESLER AFB (KBIX)
----------------------	------------------	-------------------------------------	--------------	--------------------

† MISSED APPROACH: Turn right climbing to 2100 to intercept BIX TACAN R-045 to 6 DME (HAKVA) and hold.

ATIS 281.55	GULFPORT APP CON 124.6 354.1 (130°-309°) 127.5 254.25 (310°-129°)	KEESLER TOWER ★ 120.75 269.075	GND CON 121.8 275.8	CLNC DEL 121.8 275.8
----------------	---	-----------------------------------	------------------------	-------------------------



EMERG SAFE ALT 100 NM 3100	2100	HAKVA BIX 6
JAKRI R-206 12	GUBUB 6	TACAN
5.5 NM	0.4	
2.90° TCH 48		

ELEV 33	TDZE 23
Rwy 4 ldg 6030'	Rwy 22 ldg 6630'

Diagram details: Runway 4 (026°), Taxiway A1, Tower (TWR), HIRL Rwy 4-22, REIL Rwy 4, Rwy 22 2000' non-std apch lgt system.

# TACAN RWY 4

SC-4, 26 JAN 2023 to 23 FEB 2023

SC-4, 26 JAN 2023 to 23 FEB 2023