

(PXR1.PXR) 18088

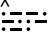
# PHOENIX ONE DEPARTURE (OBSTACLE)

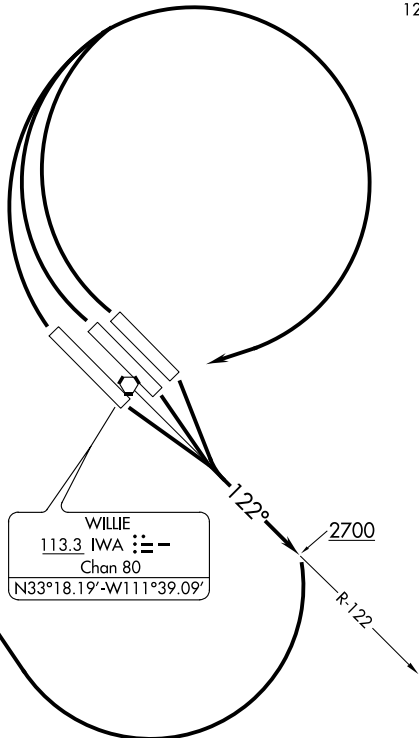
AL-74 (FAA)

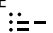
PHOENIX-MESA GATEWAY (IWA)

PHOENIX, ARIZONA

ATIS★  
 133.5 270.275  
 CLNC DEL  
 135.05  
 GND CON  
 128.25 275.8  
 GATEWAY TOWER★  
 120.6 (CTAF) 289.4  
 PHOENIX DEP CON  
 124.9 353.8

PHOENIX  
 115.6 PXR   
 Chan 103  
 N33°25.98'-W111°58.21'  
 L-5, H-4



WILLIE  
 113.3 IWA   
 Chan 80  
 N33°18.19'-W111°39.09'

SW-4, 26 JAN 2023 to 23 FEB 2023

SW-4, 26 JAN 2023 to 23 FEB 2023

### TAKEOFF MINIMUMS

Rwys 12L, 12C, 12R, 30L, 30C, 30R: Standard.

### TAKEOFF OBSTACLE NOTES

Rwys 30L/C/R: Trees beginning 351' from DER, 351' left of centerline, up to 20' AGL/1359' MSL.  
 Trees beginning 689' from DER, 398' right of centerline, up to 20' AGL/1359' MSL.

NOTE: Chart not to scale.

### DEPARTURE ROUTE DESCRIPTION

TAKEOFF RUNWAYS 12L/C/R: Climb to 2700 via IWA VORTAC R-122 then right turn direct PXR VORTAC.

TAKEOFF RUNWAYS 30L/C/R: Climbing right turn to 4000 direct IWA VORTAC and IWA VORTAC R-122 then right turn direct PXR VORTAC.

# PHOENIX ONE DEPARTURE (OBSTACLE)

(PXR1.PXR) 11FEB10

PHOENIX, ARIZONA

PHOENIX-MESA GATEWAY (IWA)