

VORTAC IWA 113.3 Chan 80	APP CRS 302°	Rwy Idg	30C	30R
		TDZE	10201	9301
			1380	1382
		Apt Elev	1384	1384

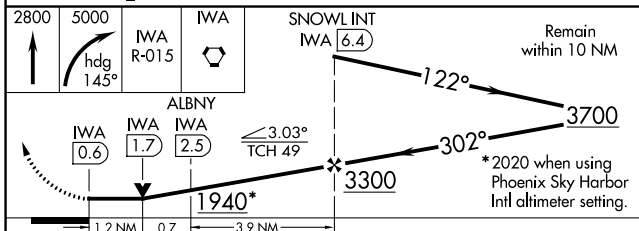
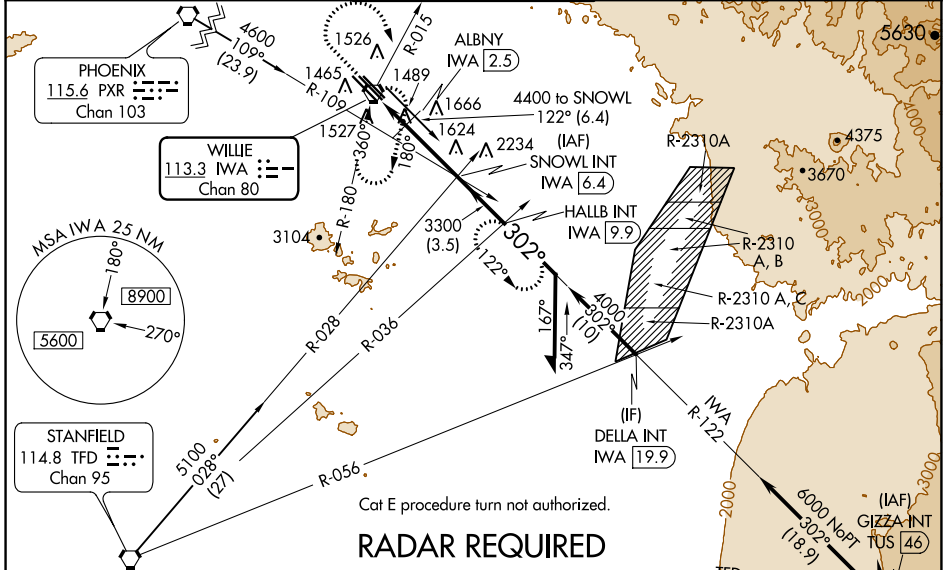
VOR or TACAN RWY 30C

PHOENIX-MESA GATEWAY (IWA)

⚠ When local altimeter setting not received, use Phoenix Sky Harbor Intl altimeter setting and increase all MDA 80 feet, increase S-30C, SIDESTEP 30R, and Circling Cats C/D/E visibility 1/4 SM.

MISSED APPROACH: Climb to 2800 then climbing right turn to 5000 via heading 145° and IWA VORTAC R-015 to IWA VORTAC and hold, continue climb-in-hold to 5000 (TACAN aircraft continue via IWA VORTAC R-122 to HALLB INT/IWA 9.9 DME and hold, continue climb-in-hold to 5000, hold SE, LT, 302° inbound).

ATIS ★ 133.5 270.275	PHOENIX APP CON 124.9 353.8	GATEWAY TOWER ★ 120.6 (CTAF) 289.4	GND CON 128.25 275.8	CLNC DEL 135.05
--------------------------------	---------------------------------------	--	--------------------------------	---------------------------



CATEGORY	A		B		C	D	E
	1940-1	560 (600-1)	1940-1	560 (600-1)	1940-1 1/2	1940-1 3/4	1940-2
S-30C	1940-1	560 (600-1)	1940-1	560 (600-1)	1940-1 1/2	1940-1 3/4	1940-2
SIDESTEP 30R	1940-1	558 (600-1)	1940-1	558 (600-1)	1940-1 1/2	1940-2	558 (600-2)
CIRCLING	1940-1	556 (600-1)	1940-1	556 (600-1)	1940-1 1/2	2000-2	2020-2 1/4
DME MINIMUMS							
S-30C	1800-1	420 (500-1)	1800-1 1/4	420 (500-1 1/4)	1800-1 1/2	1800-1 1/2	1800-1 1/2
SIDESTEP 30R	1800-1	418 (500-1)	1800-1 1/2	418 (500-1 1/2)	1800-2	1800-2	418 (500-2)
CIRCLING	1880-1	496 (500-1)	1880-1 1/2	496 (500-1 1/2)	2000-2	2000-2	2020-2 1/4

