

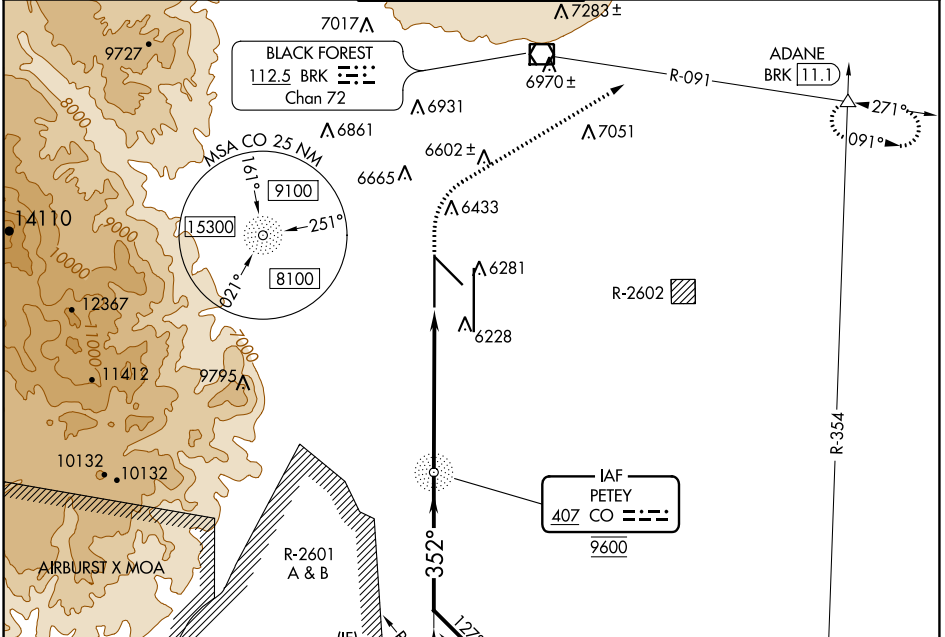
CO NDB 407	APP CRS 352°	Rwy ldg TDZE Apt Elev	11022 6075 6187
----------------------	------------------------	-----------------------------	--

NDB RWY 35L

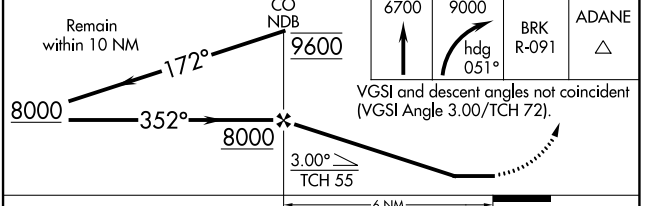
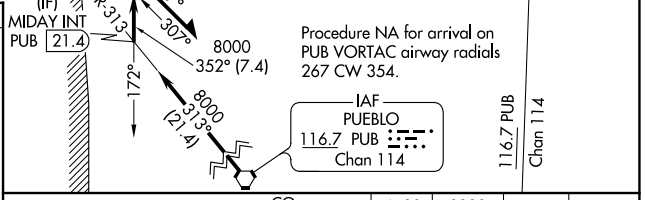
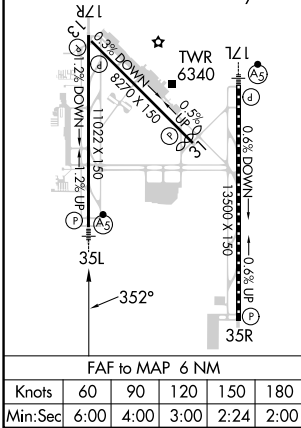
CITY OF COLORADO SPRINGS MUNI (COS)

▼ RADAR monitoring required when R-2601 in use. ▲ For inop ALS, increase S-35L Cat A/B visibility RVR 5500, and Cat C/D to 1½ SM.	MALSR 	MISSED APPROACH: Climb to 6700 then climbing right turn to 9000 on heading 051° and on BRK VOR/DME R-091 to ADANE INT/BRK 11.1 DME and hold.
---	-----------	--

ATIS 125.0 254.3	SPRINGS APP CON 124.0 257.875	SPRINGS TOWER 119.9 360.6	GND CON 121.7 348.6	CLNC DEL 134.45 363.125
----------------------------	---	-------------------------------------	-------------------------------	-----------------------------------



ELEV 6187	D TDZE 6075
HIRL Rwy 17R-35L and 17L-35R	
REIL Rwy 13, 17R, 31 and 35R	
TDZ/CL Rwy 17L and 35R	
MIRL Rwy 13-31	



CATEGORY	A	B	C	D
S-35L	6540/40	465 (400-¾)	6540/50	465 (400-1)
C CIRCLING	6740-1 553 (600-1)	6760-1 573 (600-1)	6980-2¼ 793 (800-2¼)	7240-3 1053 (1100-3)

NDB RWY 35L

SW-1, 26 JAN 2023 to 23 FEB 2023

SW-1, 26 JAN 2023 to 23 FEB 2023