

RNAV (RNP) Z RWY 17R

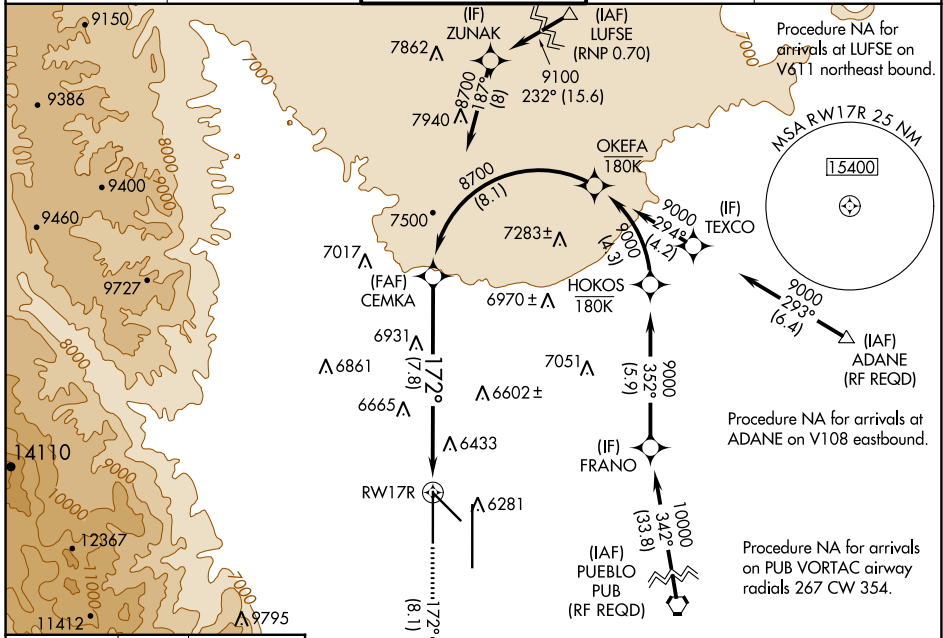
CITY OF COLORADO SPRINGS MUNI (COS)

APP CRS	Rwy Idg	11022
172°	TDZE	6177
	Apt Elev	6187

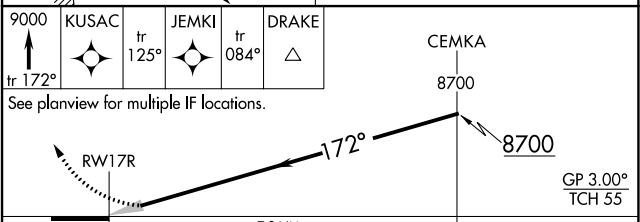
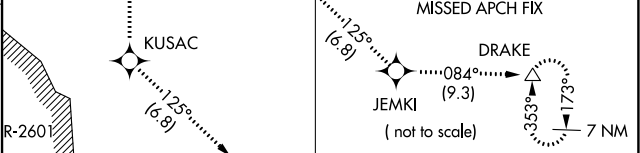
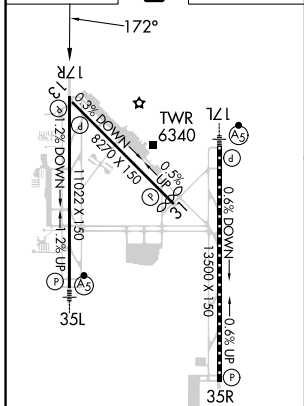
⚠ For uncompensated Baro-VNAV systems, procedure NA below -21°C (-5°F) or above 45°C (113°F). GPS required. Simultaneous approach authorized.

MISSED APPROACH: Climb to 9000 on track 172° to KUSAC and on track 125° to JEMKI and on track 084° to DRAKE and hold.

ATIS 125.0 254.3	SPRINGS APP CON 124.0 257.875	SPRINGS TOWER 119.9 360.6	GND CON 121.7 348.6	CLNC DEL 134.45 363.125
----------------------------	---	-------------------------------------	-------------------------------	-----------------------------------



ELEV 6187	D	TDZE 6177
-----------	----------	-----------



CATEGORY	A	B	C	D
RNP 0.22 DA		6659-1 $\frac{1}{8}$	482 (500-1 $\frac{3}{8}$)	
RNP 0.30 DA		6902-2 $\frac{1}{2}$	725 (800-2 $\frac{1}{2}$)	

AUTHORIZATION REQUIRED

MIRL Rwy 13-31
HIRL Rws 17R-35L and 17L-35R
REIL Rws 13, 17R, 31 and 35R
TDZ/CL Rws 17L and 35R

SW-1, 26 JAN 2023 to 23 FEB 2023

SW-1, 26 JAN 2023 to 23 FEB 2023