


WAAS CH 49112	APP CRS 352°	Rwy Idg TDZE 6075	11022
W35A		Apt Elev 6187	

RNAV (GPS) Y RWY 35L

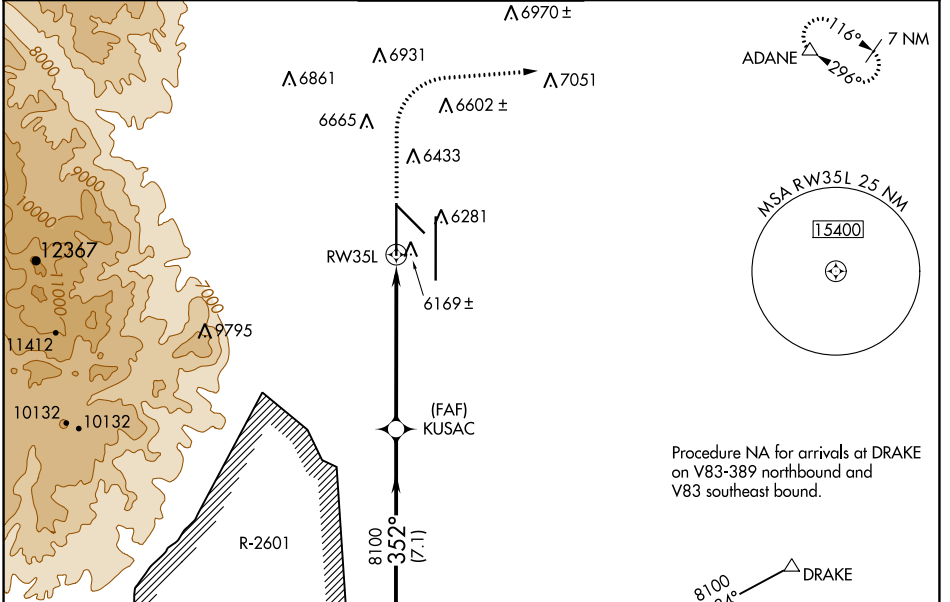
CITY OF COLORADO SPRINGS MUNI (COS)

⚠ For uncompensated Baro-VNAV systems, LNAV/VNAV NA below -21°C (-5°F) or above 54°C (130°F). DME/DME RNP-0.3 NA. For inop MALSR increase LNAV Cat C and D visibility to RVR 5500. RADAR monitoring required when R-2601 in use. # RVR 1800 authorized with use of FD or AP or HUD to DA.

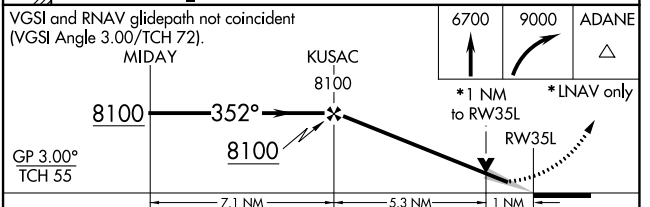
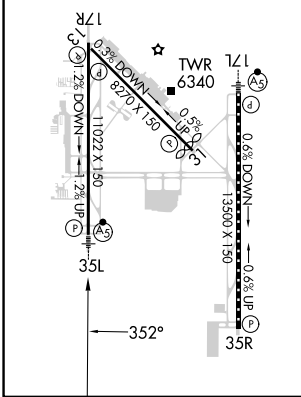
MALSR 

MISSED APPROACH: Climb to 6700 then climbing right turn to 9000 direct ADANE and hold.

ATIS 125.0 254.3	SPRINGS APP CON 124.0 257.875	SPRINGS TOWER 119.9 360.6	GND CON 121.7 348.6	CLNC DEL 134.45 363.125
----------------------------	---	-------------------------------------	-------------------------------	-----------------------------------



ELEV 6187	D	TDZE 6075
MIRL Rwy 13-31		
HIRL Rwy 17R-35L and 17L-35R		
REIL Rwy 13, 17R, 31 and 35R		
TDZ/CL Rwy 17L and 35R		



CATEGORY	A	B	C	D
LPV DA #		6275/24	200 (100-1/2)	
LNAV/VNAV DA		6380/30	305 (200-5/8)	
LNAV MDA	6440/24	365 (300-1/2)	6440/35	365 (300-5/8)
C CIRCLING	6740-1 553 (600-1)	6800-1 613 (700-1)	7040-2 1/2 853 (900-2 1/2)	7260-3 1073 (1100-3)

SW-1, 26 JAN 2023 to 23 FEB 2023

SW-1, 26 JAN 2023 to 23 FEB 2023