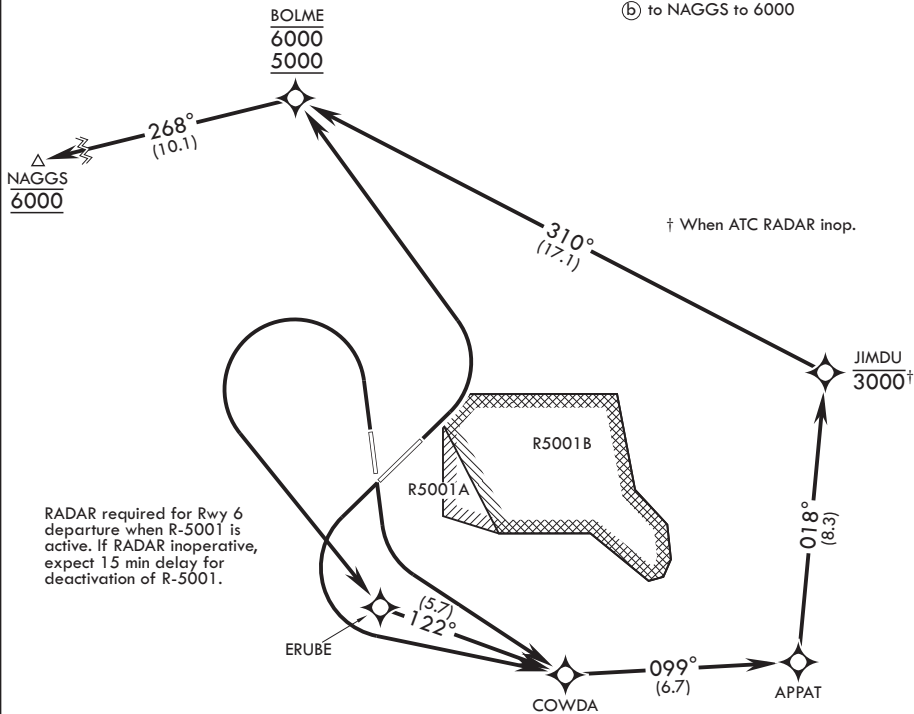


MC GUIRE APP CON/DEP CON 126.475 363.8	RNAV1	Rwy	Knots	60	120	180	240	300	360
	GPS required	6 (a)	V/V(fpm)	424	848	1272	1696	2120	2544
		6 (b)	V/V(fpm)	320	640	960	1280	1600	1920

ATC Climb Rate
(a) to BOLME to 5000
(b) to NAGGS to 6000



DEPARTURE ROUTE DESCRIPTION

TAKEOFF RWY 6: Climbing left turn direct to cross BOLME at or above 5000 and at or below 6000, then track as depicted to NAGGS. Maintain 6000.

TAKEOFF RWY 18: Climbing left turn direct COWDA, then track as depicted to NAGGS. Maintain 6000.

TAKEOFF RWY 24: Climbing left turn direct COWDA, then track as depicted to NAGGS. Maintain 6000.

TAKEOFF RWY 36: Climbing left turn direct ERUBE, then track as depicted to NAGGS. Maintain 6000.

Alternative: Initial RADAR vector climb-out option to rejoin RNAV routing at BOLME at or above 5000. All runways: Fly runway heading, maintain 6000. Request radar vector departure option with CLNC DEL upon initial contact.