

LOC I-FMY <b>110.7</b>	APP CRS <b>051°</b>	Rwy Idg <b>5947</b> TDZE <b>15</b> Apt Elev <b>17</b>
---------------------------	------------------------	---

# ILS or LOC RWY 5

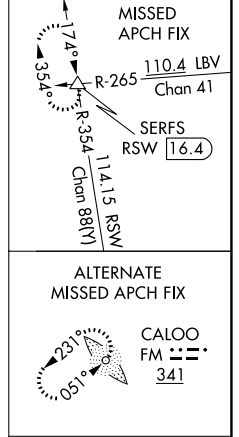
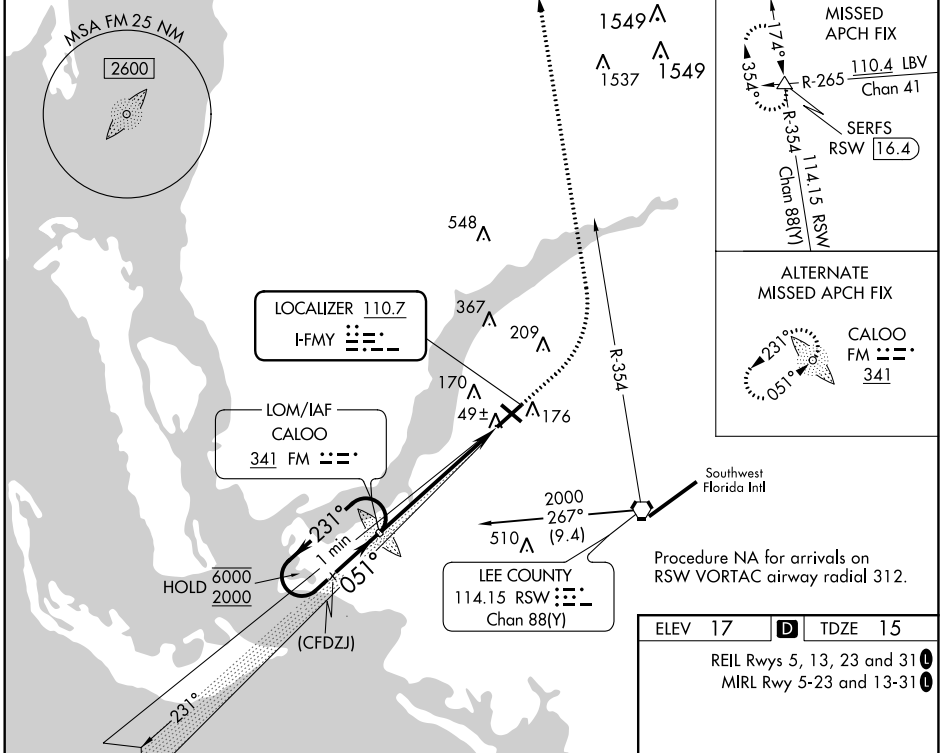
PAGE FLD (FMY)

ADF or RADAR required for procedure entry. ADF required for LOC only.

When Circling to Rwy 31 at night, operational VGSI required, remain on or above VGSI glidepath until threshold. Rwy 5 helicopter visibility reduction below 3/4 SM NA.

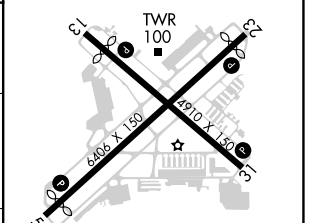
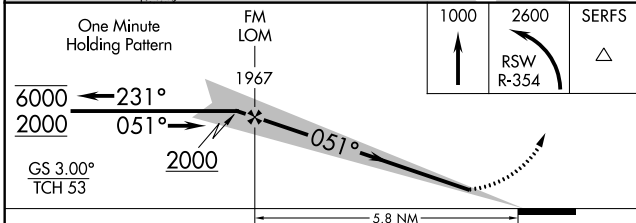
MISSED APPROACH: Climb to 1000 then climbing left turn to 2600 on RSW R-354 to SERFS INT/RSW 16.4 DME and hold.

ATIS <b>123.725</b>	FORT MYERS APP CON ★ <b>125.15 306.2</b> (Rwys 5, 13) <b>126.8 306.2</b> (Rwys 23, 31)	PAGE TOWER ★ <b>119.0</b> (CTAF) <b>306.95</b>	GND CON <b>121.7</b>	CLNC DEL <b>121.7</b>
------------------------	--	---	-------------------------	--------------------------



Procedure NA for arrivals on RSW VORTAC airway radial 312.

ELEV 17	TDZE 15
REIL Rwys 5, 13, 23 and 31	
MIRL Rwy 5-23 and 13-31	



CATEGORY	A	B	C	D
S-ILS 5	265-1		250 (300-1)	
S-LOC 5	460-1	445 (500-1)	460-1 3/8	445 (500-1 3/8)
CIRCLING	540-1	523 (600-1)	600-1 1/2 583 (600-1 1/2)	680-2 663 (700-2)

FAF to MAP 5.8 NM					
Knots	60	90	120	150	180
Min:Sec	5:48	3:52	2:54	2:19	1:56

SE-3, 26 JAN 2023 to 23 FEB 2023

SE-3, 26 JAN 2023 to 23 FEB 2023