

WAAS CH <b>50524</b> <b>W31A</b>	APP CRS <b>314°</b>	Rwy Idg <b>4667</b> TDZE <b>15</b> Apt Elev <b>17</b>
--	------------------------	---

# RNAV (GPS) RWY 31

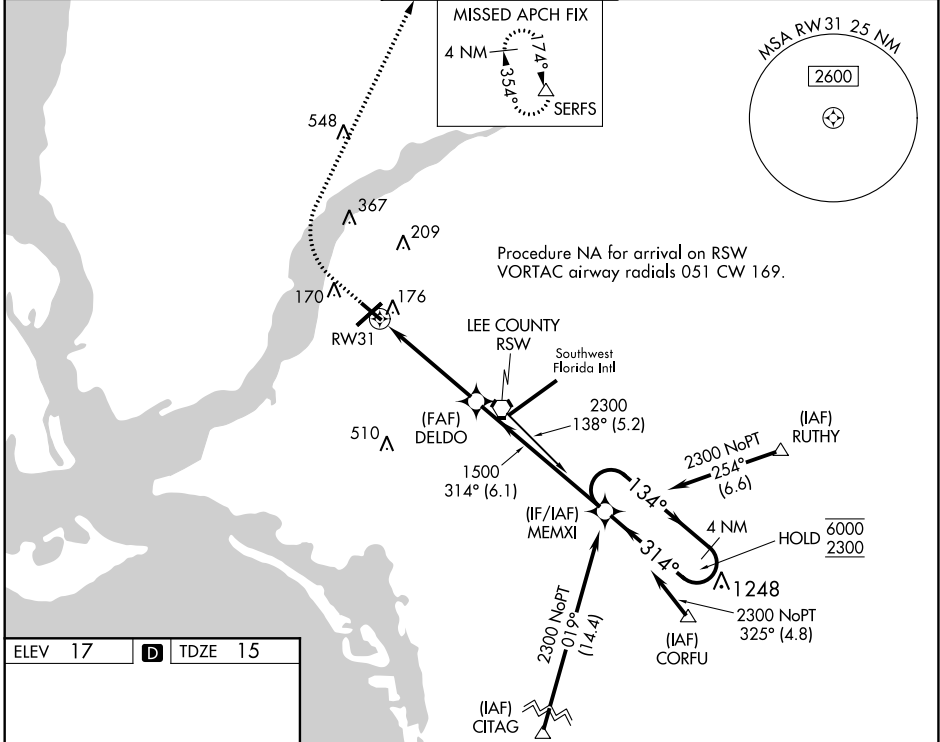
PAGE FLD (FMY)

RNP APCH

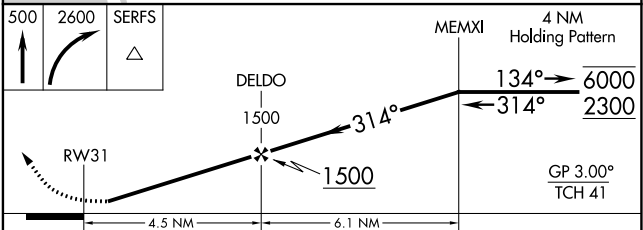
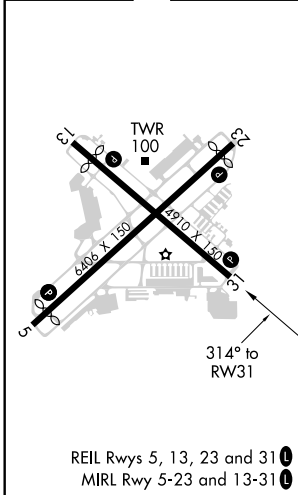
▼ Rwy 31 helicopter visibility reduction below 1 SM NA. For uncompensated Baro-VNAV systems, LNAV/VNAV NA below 4°C or above 54°C. Straight-in Rwy 31 at night, Circling Rwy 31 at night, operational VGSI required, remain on or above VGSI glidepath until threshold.

MISSED APPROACH: Climb to 500 then climbing right turn to 2600 direct SERFS and hold.

ATIS <b>123.725</b>	FORT MYERS APP CON ★ <b>125.15 306.2</b> (Rwys 5, 13) <b>126.8 306.2</b> (Rwys 23, 31)	PAGE TOWER ★ <b>119.0</b> (CTAF) <b>306.95</b>	GND CON <b>121.7</b>	CLNC DEL <b>121.7</b>
------------------------	--	---	-------------------------	--------------------------



ELEV 17	<b>D</b>	TDZE 15
---------	----------	---------



CATEGORY	A	B	C	D
LPV DA		265-1	250 (300-1)	
LNAV/VNAV DA		377-1	362 (400-1)	
LNAV MDA	480-1	465 (500-1)	480-1 3/8	465 (500-1 3/8)
<b>C</b> CIRCLING	540-1	523 (600-1)	600-1 1/2 583 (600-1 1/2)	680-2 663 (700-2)

SE-3, 26 JAN 2023 to 23 FEB 2023

SE-3, 26 JAN 2023 to 23 FEB 2023