

TYNEE TWO ARRIVAL (RNAV)

FORT MYERS, FLORIDA

FORT MYERS APP CON *
134.425 306.2
FMY ATIS
123.725
RSW D-ATIS
124.65

ARRIVAL ROUTE DESCRIPTION

- BAGGS TRANSITION (BAGGS.TYNEE2)
- CODGR TRANSITION (CODGR.TYNEE2)
- FRZBE TRANSITION (FRZBE.TYNEE2)
- PLYER TRANSITION (PLYER.TYNEE2)

From TYNEE on track 149° to PASTR, thence....

....Landing KRSW Rwy 6: from PASTR on track 107° to LENPE, then on heading 107° or as assigned by ATC. Expect RADAR vectors to final approach course.

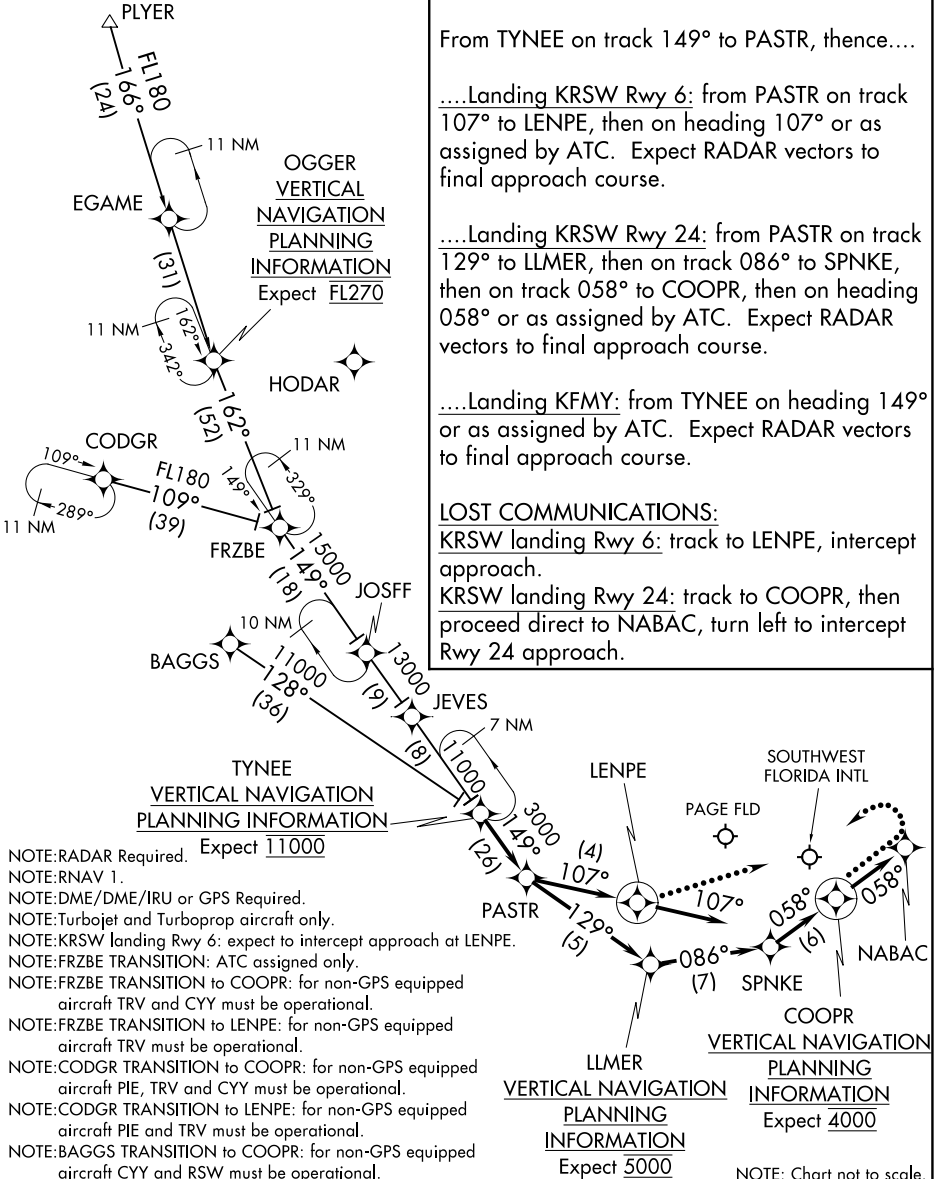
....Landing KRSW Rwy 24: from PASTR on track 129° to LLMER, then on track 086° to SPNKE, then on track 058° to COOPR, then on heading 058° or as assigned by ATC. Expect RADAR vectors to final approach course.

....Landing KFMY: from TYNEE on heading 149° or as assigned by ATC. Expect RADAR vectors to final approach course.

LOST COMMUNICATIONS:

KRSW landing Rwy 6: track to LENPE, intercept approach.

KRSW landing Rwy 24: track to COOPR, then proceed direct to NABAC, turn left to intercept Rwy 24 approach.



- NOTE:RADAR Required. Expect 11000
- NOTE:RNAV 1.
- NOTE:DME/DME/IRU or GPS Required.
- NOTE:Turbopjet and Turboprop aircraft only.
- NOTE:KRSW landing Rwy 6: expect to intercept approach at LENPE.
- NOTE:FRZBE TRANSITION: ATC assigned only.
- NOTE:FRZBE TRANSITION to COOPR: for non-GPS equipped aircraft TRV and CYY must be operational.
- NOTE:FRZBE TRANSITION to LENPE: for non-GPS equipped aircraft TRV must be operational.
- NOTE:CODGR TRANSITION to COOPR: for non-GPS equipped aircraft PIE, TRV and CYY must be operational.
- NOTE:CODGR TRANSITION to LENPE: for non-GPS equipped aircraft PIE and TRV must be operational.
- NOTE:BAGGS TRANSITION to COOPR: for non-GPS equipped aircraft CYY and RSW must be operational.

VERTICAL NAVIGATION PLANNING INFORMATION
Expect 5000

VERTICAL NAVIGATION PLANNING INFORMATION
Expect 4000

NOTE: Chart not to scale.

TYNEE TWO ARRIVAL (RNAV)

FORT MYERS, FLORIDA

SE-3, 26 JAN 2023 to 23 FEB 2023

SE-3, 26 JAN 2023 to 23 FEB 2023