


WAAS CH 70610 W08A	APP CRS 082°	Rwy Idg TDZE Apt Elev	5000 342 347
--	------------------------	-----------------------------	---

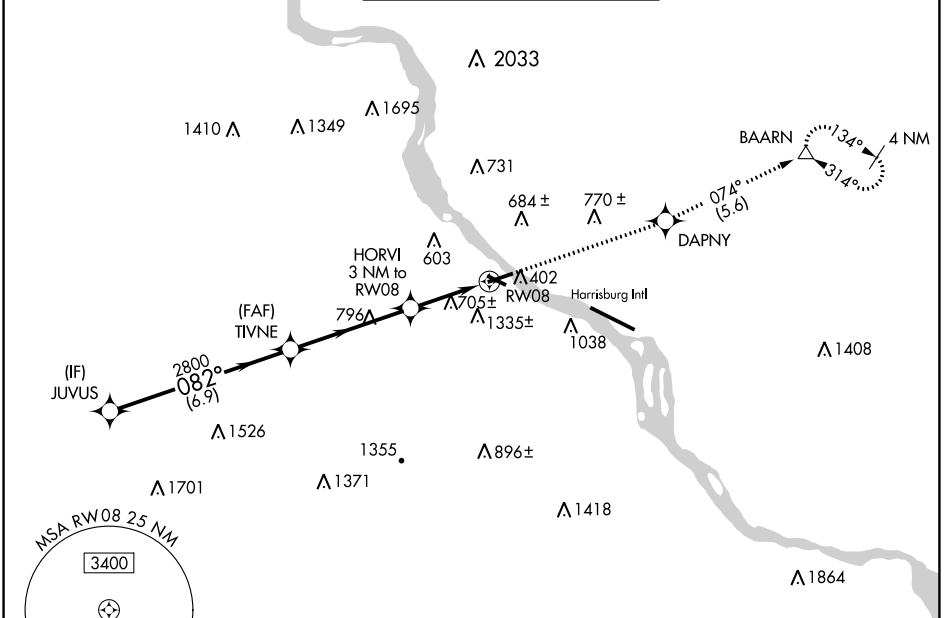
RNAV (GPS) RWY 8

CAPITAL CITY (CXY)

▽ DME/DME RNP-0.3 NA. When local altimeter setting not received, use Harrisburg Intl altimeter setting. For inop MALSRL, increase LPV all Cats visibility to 1½ mile and increase LNAV Cat C, D visibility to 1¾ mile. Helicopter visibility reduction below 1 SM NA. Procedure NA at night.

MALSRL
 MISSED APPROACH: Climb to 3000 direct DAPNY and on track 074° to BAARN and hold.

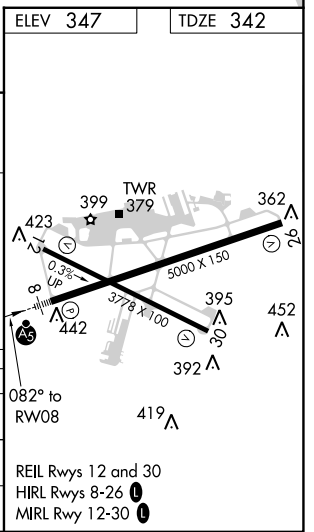
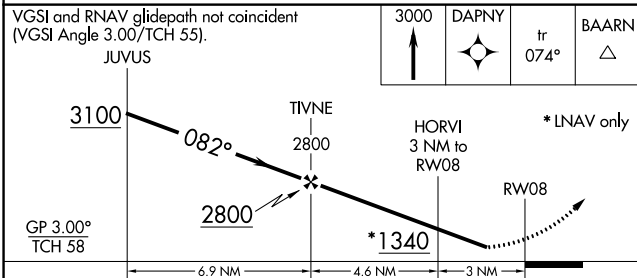
ATIS 134.95	HARRISBURG APP CON 124.1 273.525	CAPITAL CITY TOWER * 119.5 (CTAF) 0 257.8	GND CON 121.9	UNICOM 122.95
-----------------------	--	--	-------------------------	-------------------------



NE-4, 26 JAN 2023 to 23 FEB 2023

NE-4, 26 JAN 2023 to 23 FEB 2023

RADAR REQUIRED



CATEGORY	A	B	C	D
LPV DA	833-1¼		491 (500-1¼)	
LNAV MDA	960-1 625 (700-1)		960-1¾ 625 (700-1¾)	
CIRCLING	1200-1¼ 853 (900-1¼)	1700-1½ 1353 (1400-1½)	1700-3	1353 (1400-3)

REIL Rwy 12 and 30
HIRL Rwy 8-26
MIRL Rwy 12-30