

# AGUDE FIVE ARRIVAL

AL-263 (FAA)

MINNEAPOLIS-ST PAUL, MINNESOTA

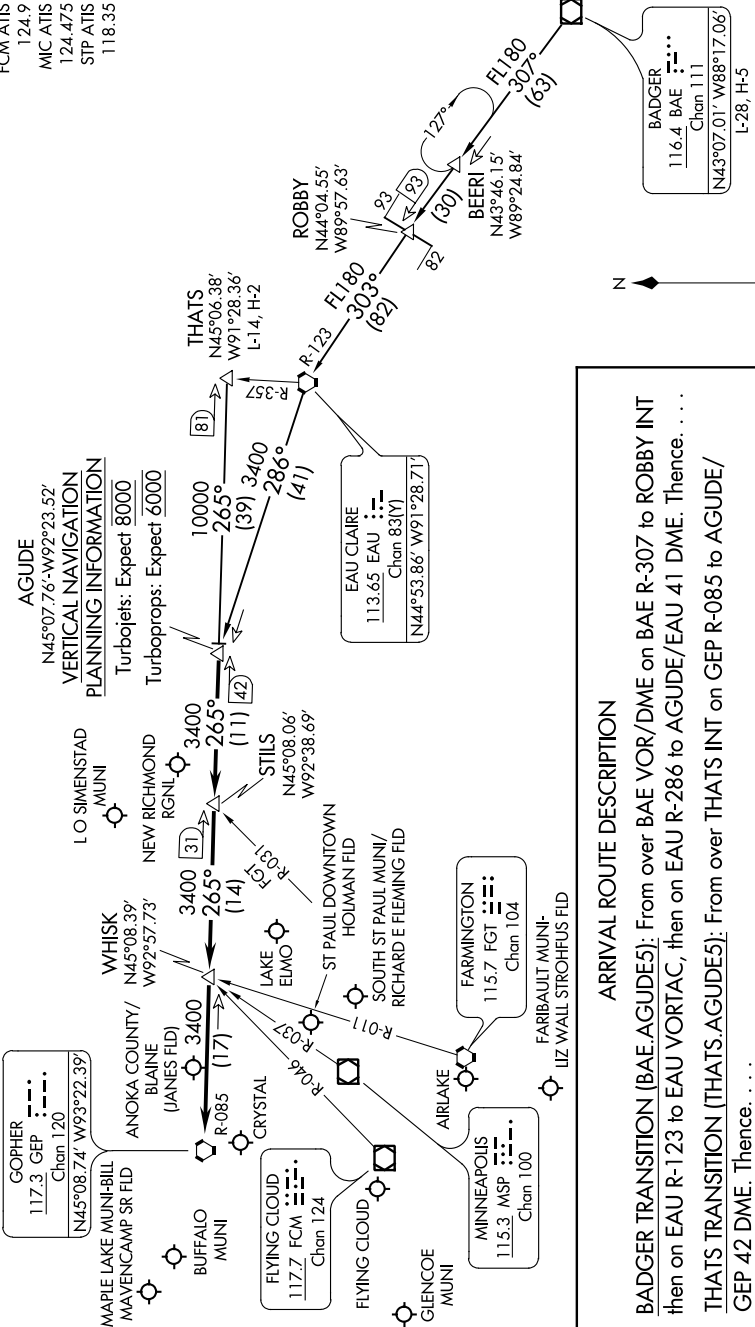
NC-1, 26 JAN 2023 to 23 FEB 2023

NOTE: Chart not to scale.

NOTE: DME and RADAR required.

MINNEAPOLIS APP CON  
121.2 335.5  
ANE ATIS  
120.625  
FCM ATIS  
124.9  
MIC ATIS  
124.475  
STP ATIS  
118.35

**AGUDE**  
N45°07.76'-W92°23.52'  
**VERTICAL NAVIGATION**  
PLANNING INFORMATION  
Turbolojets: Expect 8000  
Turboprops: Expect 6000



**ARRIVAL ROUTE DESCRIPTION**

**BADGER TRANSITION (BAE.AGUDE5):** From over BAE VOR/DME on BAE R-307 to ROBBERY INT then on EAU R-123 to EAU VORTAC, then on EAU R-286 to AGUDE/EAU 41 DME. Thence. . . .

**THATS TRANSITION (THATS.AGUDE5):** From over THATS INT on GEP R-085 to AGUDE/ GEP 42 DME. Thence. . . .

. . . . From over AGUDE/GEP 42 DME via GEP R-085 to GEP VORTAC, then expect RADAR vectors to final approach course.

# AGUDE FIVE ARRIVAL

NC-1, 26 JAN 2023 to 23 FEB 2023