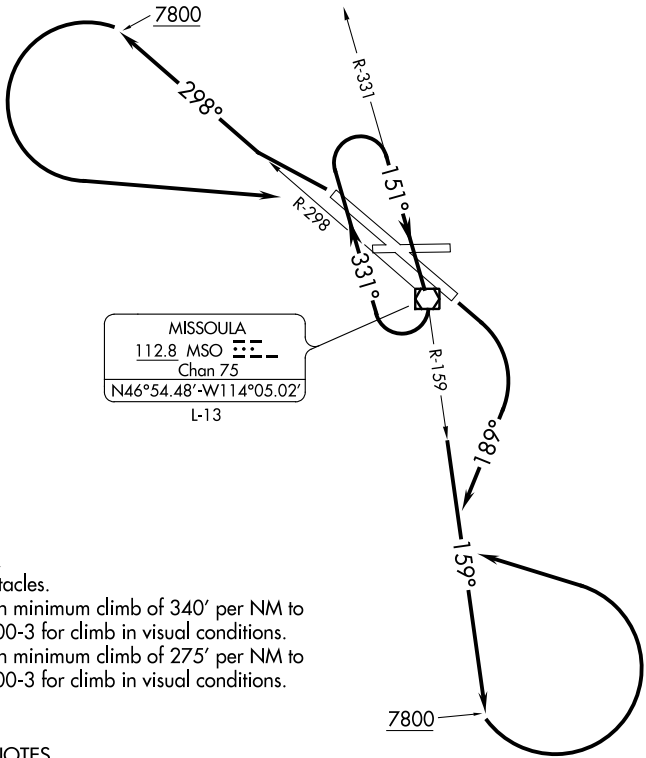


ATIS  
126.65  
GND CON  
121.9  
MISSOULA TOWER\*  
118.4 (CTAF) 377.175  
SPOKANE DEP CON  
124.9 298.95  
SALT LAKE CITY CENTER  
133.4 285.4



MISSOULA	
112.8 MSL	☐
Chan 75	
N46°54.48'-W114°05.02'	
L-13	

**TAKEOFF MINIMUMS**

- Rwys 8, 26: NA- Obstacles.
- Rwy 12: Standard with minimum climb of 340' per NM to 7800, or 2700-3 for climb in visual conditions.
- Rwy 30: Standard with minimum climb of 275' per NM to 7800, or 2700-3 for climb in visual conditions.

**TAKEOFF OBSTACLE NOTES**

Rwy 12: Fence beginning 22' from DER, 487' right of centerline, up to 9' AGL/3215' MSL.

NOTE: Chart not to scale.

**DEPARTURE ROUTE DESCRIPTION**

**TAKEOFF RUNWAY 12:** Climbing right turn heading 189° to intercept MSO R-159, southeast bound to 7800, thence. . . .

or, climb in visual conditions to cross MSO VOR/DME southeast bound at or above 5800, continue climb to 7800 on MSO VOR/DME R-159, thence. . . .

**TAKEOFF RUNWAY 30:** Climb on MSO R-298 to 7800, then climbing left turn on MSO R-298 to MSO VOR/DME, climb in MSO VOR/DME holding pattern to MEA/MCA for route of flight or, climb in visual conditions to cross MSO VOR/DME southeast bound at or above 5800, continue climb to 7800 on MSO VOR/DME R-159, thence. . . .

. . . .climbing left turn on MSO VOR/DME R-159 to MSO VOR/DME, climb in MSO VOR/DME holding pattern to MEA/MCA for route of flight.