

WAAS CH 42910 W06A	APP CRS 063°	Rwy Idg TDZE 156 Apt Elev 164	5001
--	------------------------	---	-------------

RNAV (GPS) RWY 6

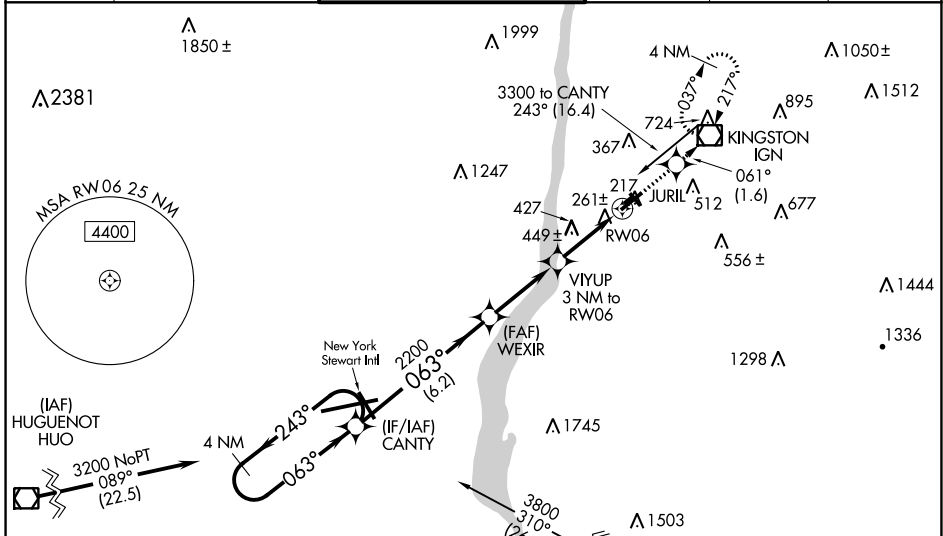
HUDSON VALLEY RGNL (POU)

⚠ Circling NA to Rwy 7 and 25. Baro-VNAV NA when using Montgomery altimeter setting. For uncompensated Baro-VNAV systems, LNAV/VNAV NA below -15°C (5°F) or above 49°C (120°F). Circling Rwy 15, 33 NA at night. Rwy 6 helicopter visibility reduction below ¾ SM NA. Rwy 15, 33 helicopter visibility reduction below 1 SM NA. DME/DME RNP-0.3 NA. When local altimeter setting not received, use Montgomery altimeter setting: increase LPV DA to 574; increase LNAV/VNAV DA to 809 and all Cats visibility ¼ SM; increase all MDA 80 feet and LNAV Cats C/D and Circling Cats C/D visibility ¼ SM; inop table does not apply to LNAV Cats A/B; for inop ALS, increase LPV all Cats visibility to 1 ½ SM. For inop ALS when using Montgomery altimeter setting, increase LPV all Cats visibility to 1 ¾ SM, LNAV/VNAV all Cats visibility to 2 SM and LNAV Cats C/D to 1 ¾ SM.

MALSR

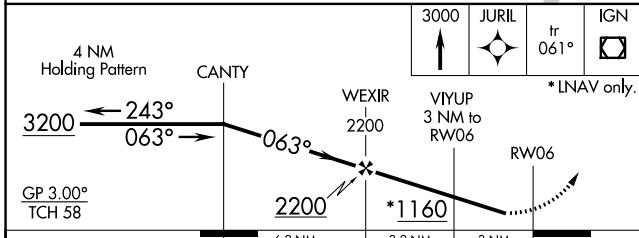
MISSED APPROACH:
Climb to 3000 direct JURIL and on track 061° to IGN VOR/DME and hold, continue climb-in-hold to 3000.

ATIS 126.75	NEW YORK APP CON 132.75 363.1	DUTCHESS COUNTY TOWER ★ 124.0 (CTAF) 269.15	GND CON 121.8	CLNC DEL 121.8	UNICOM 122.95
-----------------------	---	---	-------------------------	--------------------------	-------------------------



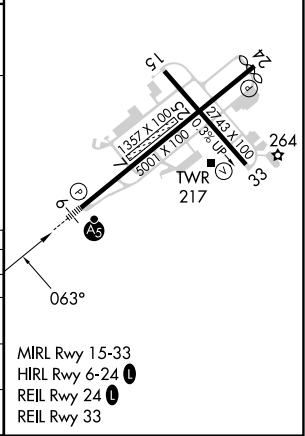
Procedure NA for arrivals on HUO VOR/DME airway radials 019 CW 145.

Procedure NA for arrivals on CMK VOR/DME airway radials 255 CW 356.



ELEV 164	TDZE 156
----------	----------

CATEGORY	A	B	C	D
LPV DA		503-1	347 (400-1)	
LNAV/VNAV DA		738-1 ½	582 (600-1 ½)	
LNAV MDA	740-1	584 (600-1)	740-1 ¼	584 (600-1 ¼)
CIRCLING	760-1 596 (600-1)	840-1 676 (700-1)	940-2 ¼ 776 (800-2 ¼)	1080-3 916 (1000-3)



NE-2, 26 JAN 2023 to 23 FEB 2023

NE-2, 26 JAN 2023 to 23 FEB 2023