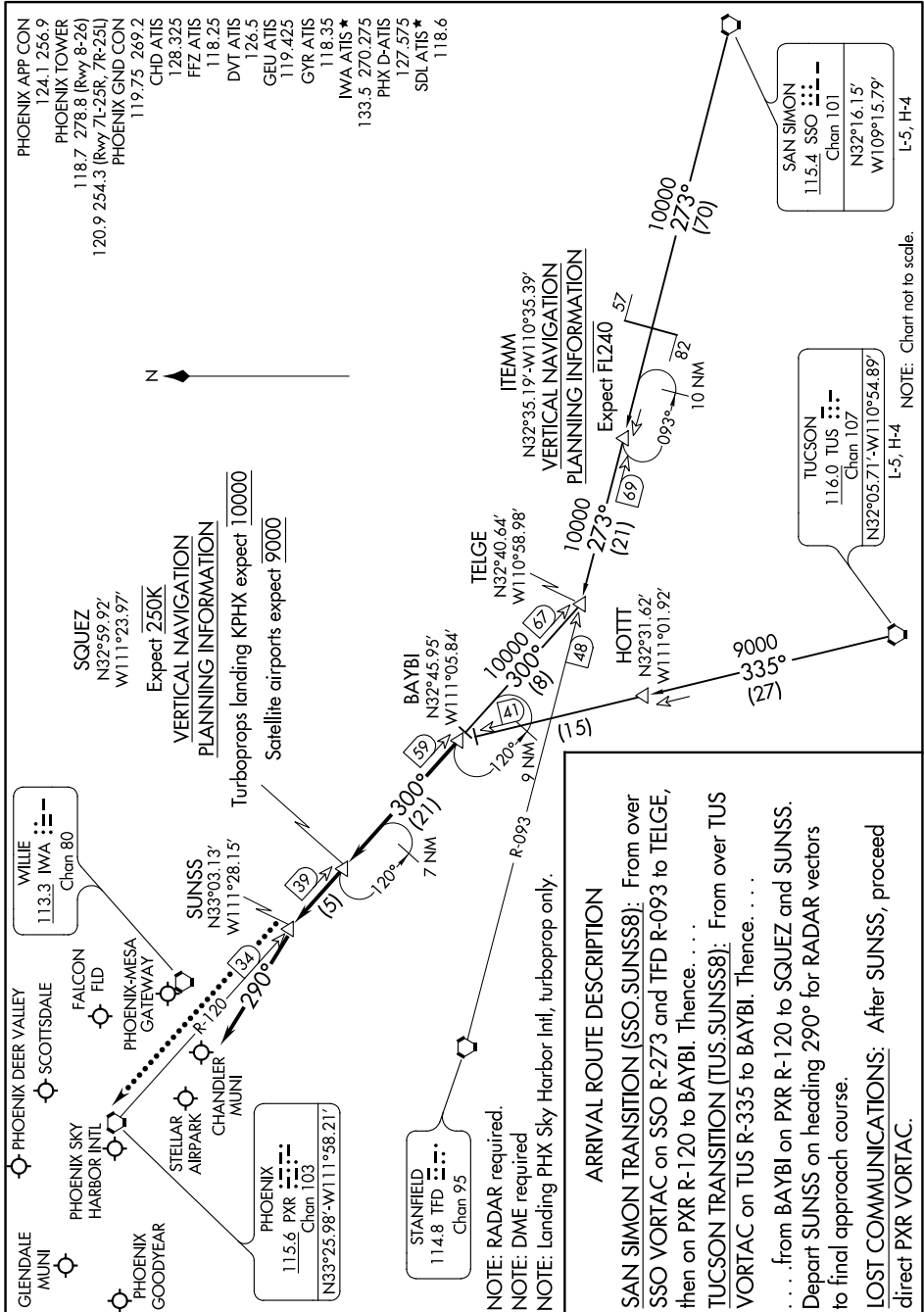


SUNSS EIGHT ARRIVAL

AL-322 (FAA)

PHOENIX, ARIZONA

SW-4, 26 JAN 2023 to 23 FEB 2023



SUNSS EIGHT ARRIVAL

PHOENIX, ARIZONA

SW-4, 26 JAN 2023 to 23 FEB 2023

- PHOENIX APP CON 124.1 256.9
- PHOENIX TOWER 118.7 278.8 (Rwy 8-26)
- 120.9 254.3 (Rwy 7L-25R, 7R-25L)
- PHOENIX GND CON 119.75 269.2
- CHD ATIS 128.325
- 128.325
- FFZ ATIS 118.25
- DVT ATIS 126.5
- GEU ATIS 119.425
- GYR ATIS 118.35
- IWA ATIS ★ 133.5 270.275
- PHX D-ATIS 127.575
- SDL ATIS ★ 118.6

SAN SIMON	115.4 SSO	Chan 101
	N32°16.15'	W109°15.79'

TUCSON	116.0 TUS	Chan 107
	N32°05.71'	W110°54.89'

NOTE: Chart not to scale.

L-5, H-4

L-5, H-4

ARRIVAL ROUTE DESCRIPTION

SAN SIMON TRANSITION (SSO.SUNSS8): From over SSO VORTAC on SSO R-273 and TFD R-093 to TELGE, then on PXR R-120 to BAYBI. Thence. . . .

TUCSON TRANSITION (TUS.SUNSS8): From over TUS VORTAC on TUS R-335 to BAYBI. Thence. . . .

. . . from BAYBI on PXR R-120 to SQUEZ and SUNSS. Depart SUNSS on heading 290° for RADAR vectors to final approach course.

LOST COMMUNICATIONS: After SUNSS, proceed direct PXR VORTAC.

- NOTE: RADAR required.
- NOTE: DME required
- NOTE: Landing PHX Sky Harbor Intl, turboprop only.