

LOC/DME I-PIR 111.9 Chan 56	APP CRS 313°	Rwy Ldg TDZE Apt Elev	6900 1720 1744
--	------------------------	-----------------------------	---

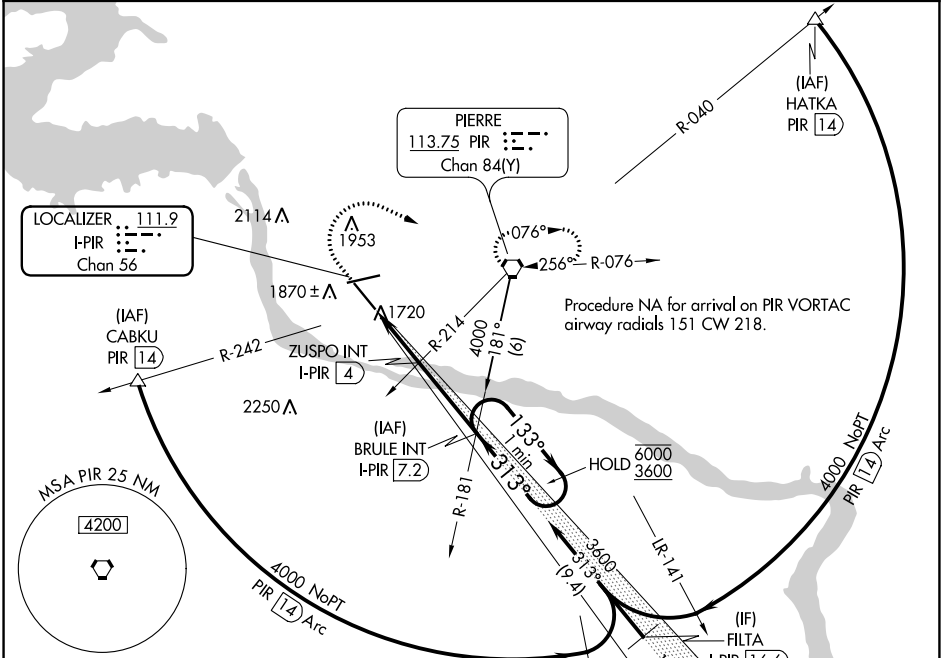
ILS or LOC RWY 31

PIERRE RGNL (PIR)

▲ For inop ALS, increase S-LOC 31 Cat C/D visibility to 7/5 SM.

MALS MISSED APPROACH: Climb to 2400 then climbing right turn to 4000 direct PIR VORTAC and hold, continue climb-in-hold to 4000.

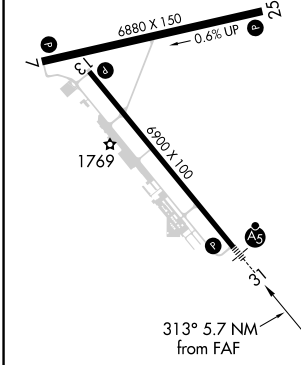
ASOS 119.025	MINNEAPOLIS CENTER 125.1 269.1	CTAF 122.70	UNICOM 122.95
------------------------	--	-----------------------	-------------------------



ELEV 1744	D	TDZE 1720
-----------	----------	-----------

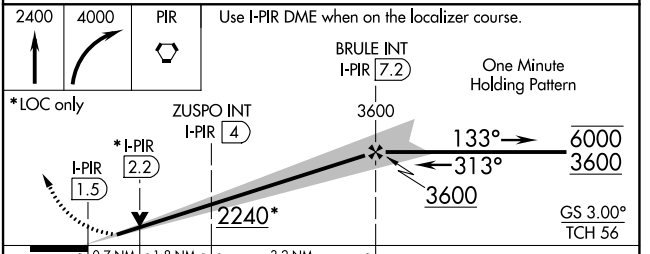
REIL Rwy 7, 13, and 25

HIRL Rwy 7-25 and 13-31



▲ 2520

2400 4000 PIR Use I-PIR DME when on the localizer course.



CATEGORY	A	B	C	D
S-ILS 31	1920-1/2 200 (200-1/2)			
S-LOC 31	1980-1/2 260 (300-1/2)			
C CIRCLING	2240-1 496 (500-1)	2300-1 556 (600-1)	2400-1 3/4 656 (700-1 3/4)	2460-2 1/4 716 (800-2 1/4)

NC-1, 26 JAN 2023 to 23 FEB 2023

NC-1, 26 JAN 2023 to 23 FEB 2023