

CHERRY POINT, NORTH CAROLINA

# COPTER TACAN RWY 23R

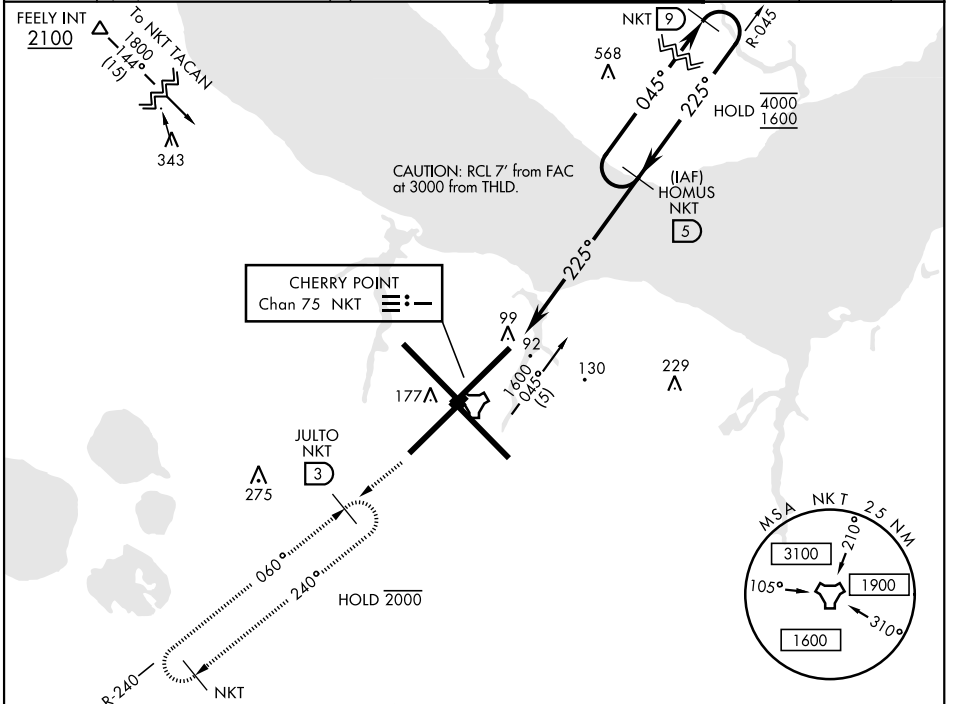
TACAN NKT Chan 75	APCH CRS 225°	Rwy Idg 7552 TDZE 23 Arprt Elev 29	AL-471 [UN]	CHERRY POINT MCAS (CUNNINGHAM FLD)	(KNKT)
----------------------	------------------	---	-------------	------------------------------------	--------

▼ \* When ALS inop, increase vis to 1 mile.  
Max Airspeed 90 KIAS

MALS R (A5)

MISSED APPROACH: Climb to 1600 direct NKT TACAN, then via NKT R-240 to JULTO and hold.

ATIS 127.475 244.875	(E) 119.75 (E) 132.575 (W) 119.35	APP CON 360.775 (abv 2600') 299.6 (at/blw 2600') 377.175 (N) 124.1 268.7	TOWER 121.3 340.2	GND CON 128.625 239.025	CLNC DEL 125.95 316.125	ASR/ PAR
----------------------------	---	---	----------------------	-------------------------------	-------------------------------	-------------



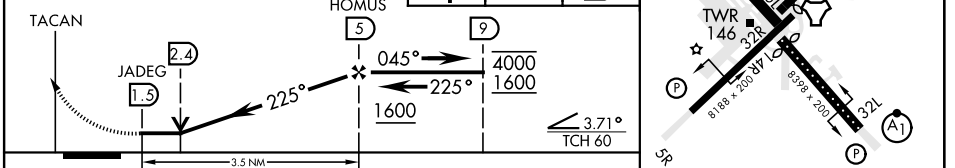
ELEV 29	D	TDZE 23
---------	---	---------

EMERG SAFE ALT 100 NM 4100

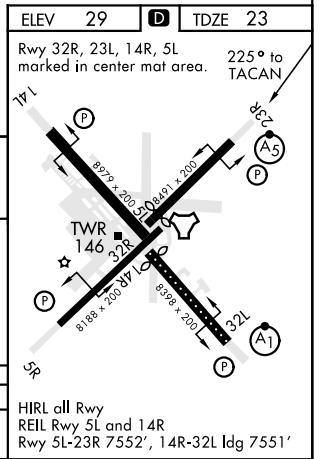
Rwy 32R, 23L, 14R, 5L 225° to TACAN marked in center mat area.

WARNING: VGS1 and descent angle/TCH not coincident. (VGS1 Angle 3.00/TCH: 71').

1600	NKT	JULTO NKT R-240



CATEGORY	COPTER	
S-23R *	480-1/2	457 (500-1/2)



CHERRY POINT, NORTH CAROLINA 34°54'N-76°53'W CHERRY POINT MCAS (CUNNINGHAM FLD) (KNKT)

Amtd 7 27JAN22

# COPTER TACAN RWY 23R

SE-2, 26 JAN 2023 to 23 FEB 2023

SE-2, 26 JAN 2023 to 23 FEB 2023