

CHERRY POINT, NORTH CAROLINA

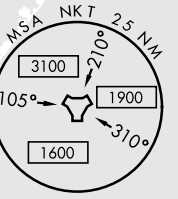
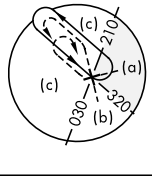
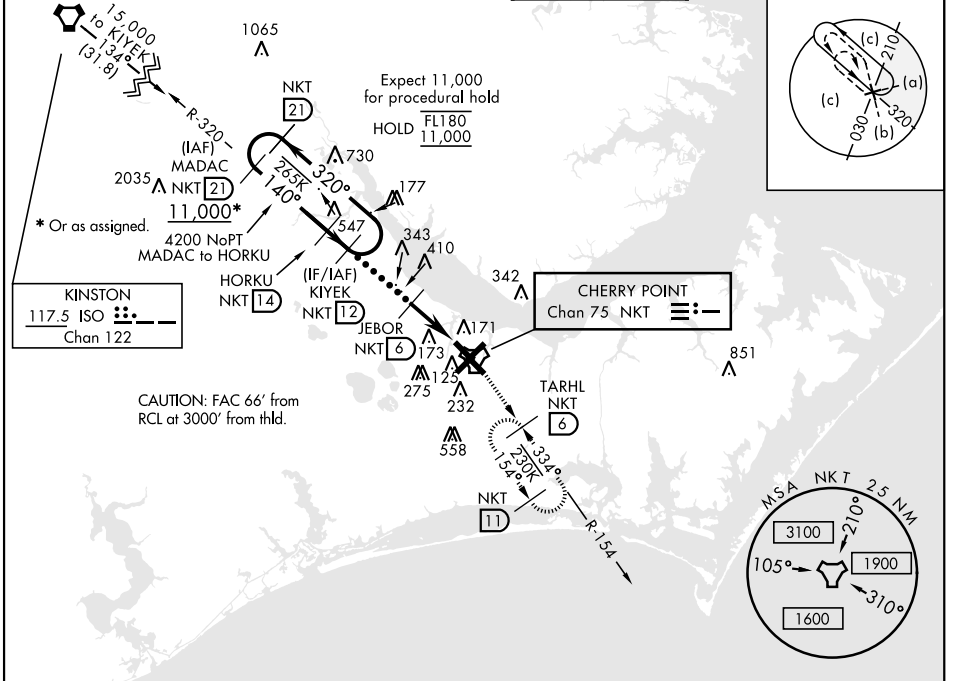
HI-TACAN Z RWY 14L

TACAN NKT Chan 75	APCH CRS 140°	Rwy Idg 8979	TDZE 26	Arpt Elev 29
----------------------	------------------	-----------------	------------	-----------------

AL-471 [USN] CHERRY POINT MCAS (CUNNINGHAM FLD) (KNKT)

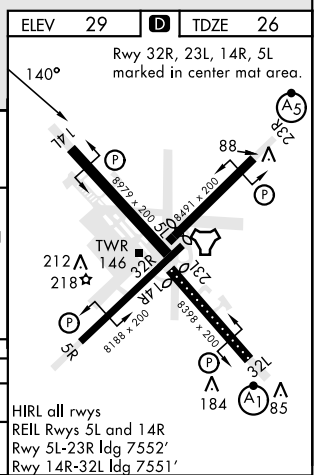
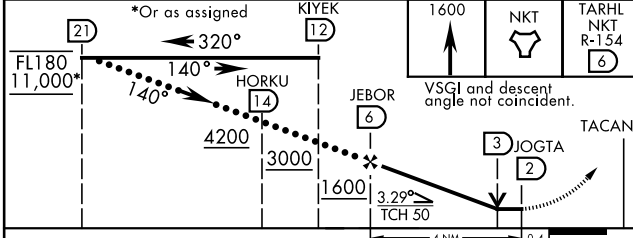
MISSED APPROACH: Climb to 1600 to NKT TACAN then intercept NKT R-154 to TARHL and hold.

ATIS 127.475 244.875	APP CON 119.75 360.775 (E) (abv 2600') 132.575 299.6 (E) (at/blw 2600') 119.35 377.175 (W) 124.1 268.7 (N)	TOWER 121.3 340.2	GND CON 128.625 239.025	CLNC DEL 125.95 316.125	ASR/ PAR
----------------------------	---	----------------------	-------------------------------	-------------------------------	-------------



EMERG SAFE ALT 100 NM 4100

*Or as assigned



CATEGORY	C	D	E
S-14L	500-1 $\frac{3}{8}$	474	(500-1 $\frac{3}{8}$)
CIRCLING	600-1 $\frac{1}{2}$ 571 (600-1 $\frac{1}{2}$)	600-2 571 (600-2)	700-2 $\frac{1}{2}$ 671 (700-2 $\frac{1}{2}$)

CHERRY POINT, NORTH CAROLINA 34° 54' N-76° 53' W CHERRY POINT MCAS (CUNNINGHAM FLD) (KNKT)

Amdt 8 08SEP22

HI-TACAN Z RWY 14L

SE-2, 26 JAN 2023 to 23 FEB 2023

SE-2, 26 JAN 2023 to 23 FEB 2023