

# ILS or LOC/DME RWY 23R

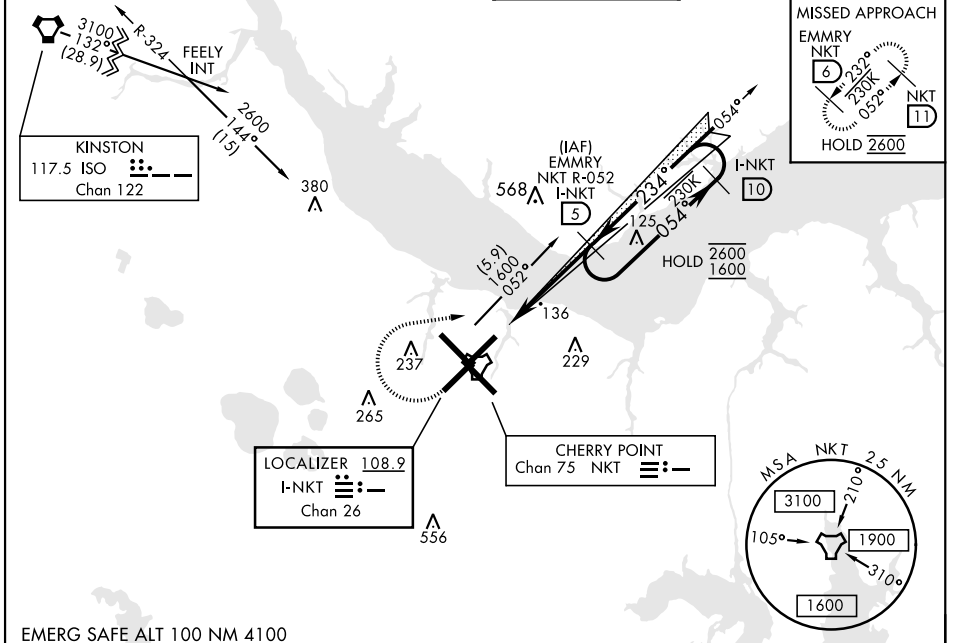
LOC/DME I-NKT <b>108.9</b> Chan <b>26</b>	APCH CRS <b>234°</b>	Rwy ldg TDZE <b>7552</b> <b>23</b> Arprt Elev <b>29</b>
---	-------------------------	---

AL-471 [USN]

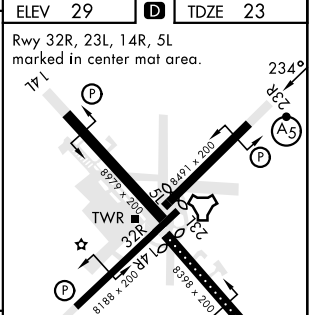
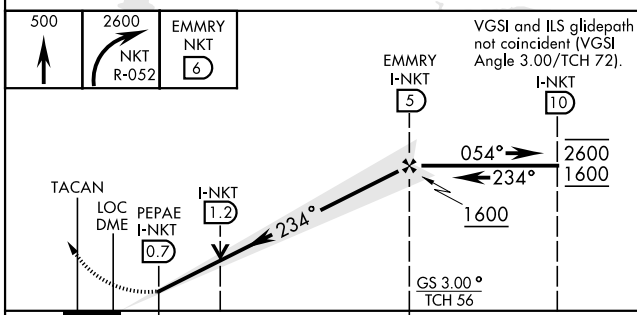
CHERRY POINT MCAS (CUNNINGHAM FLD) (KNKT)

TACAN Required * When ALS inop, increase vis to ¾ mile. ** When ALS inop, increase vis to 1 mile.	MALSR 	MISSED APPROACH: Climb to 500, then climbing right turn to 2600 via NKT TACAN R-052 to EMMRY and hold. Continue climb in hold.
---	-----------	--

ATIS <b>127.475</b> <b>244.875</b>	(E) <b>119.75</b> (E) <b>132.575</b> (W) <b>119.35</b>	APP CON <b>360.775</b> (abv 2600') <b>299.6</b> (at/blw 2600') <b>377.175</b> (N) <b>124.1 268.7</b>	TOWER <b>121.3 340.2</b>	GND CON <b>128.625</b> <b>239.025</b>	CLNC DEL <b>125.95</b> <b>316.125</b>	ASR/PAR
--	--	---	-----------------------------	---	---	---------



EMERG SAFE ALT 100 NM 4100



CATEGORY	A	B	C	D
S-ILS 23R*		223-½	200	(200-½)
S-LOC 23R**	400-½	377 (400-½)	400-⅝	377 (400-⅝)
<b>C</b> CIRCLING	580-1	551 (600-1)	580-1½ 551 (600-1½)	580-2 551 (600-2)

ELEV 29	<b>D</b>	TDZE 23			
Rwy 32R, 23L, 14R, 5L marked in center mat area.					
HIRL all Rwy REIL Rwy 5L and 14R Rwy 5L-23R ldg 7552', 14R-32L ldg 7551'					
FAF to MAP 4.3 NM					
Knots	60	90	120	150	180
Min:Sec	4:18	2:52	2:09	1:43	1:26

# ILS or LOC/DME RWY 23R

SE-2, 26 JAN 2023 to 23 FEB 2023

SE-2, 26 JAN 2023 to 23 FEB 2023