

RNAV (GPS) RWY 14L

WAAS Chan 41117 W14A	APCH CRS 144°	Rwy Idg TDZE Arprt Elev 8979 26 29
--	-------------------------	--

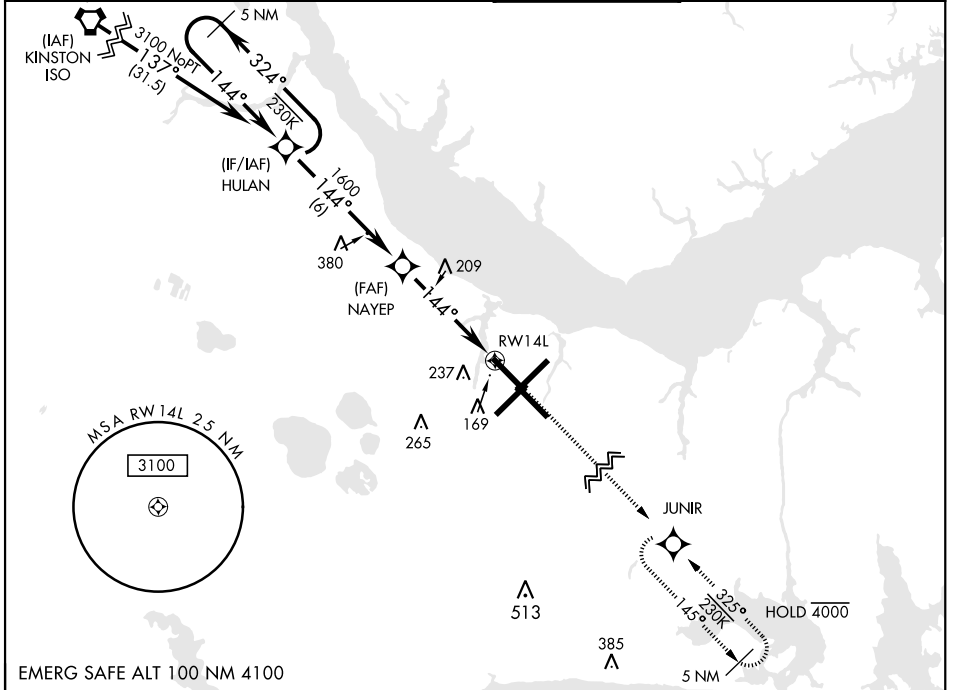
AL-471 [USN] CHERRY POINT MCAS (CUNNINGHAM FLD) (KNKT)

RNP APCH

▼ For uncompensated Baro-VNAV systems, LNAV/VNAV NA below -15°C (5°F) or above 54°C (129°F).

MISSED APPROACH: Climb to 3100 direct JUNIR and hold.

ATIS 127.475 244.875	APP CON 119.75 (E) 360.775 (abv 2600') 132.575 (E) 299.6 (at/blw 2600') 119.35 (W) 377.175 (N) 124.1 268.7	TOWER 121.3 340.2	GND CON 128.625 239.025	CLNC DEL 125.95 316.125	ASR/PAR
--	---	------------------------------------	---	---	---------



EMERG SAFE ALT 100 NM 4100

5 NM Holding Pattern					VGSi and RNAV glidepath not coincident (VGSi Angle 3.00/TCH 71).		ELEV 29		D TDZE 26		
CATEGORY	A	B	C	D							
LPV DA	226- ³ / ₄		200 (200- ³ / ₄)								
LNAV/VNAV DA	302- ⁷ / ₈ 276 (300- ⁷ / ₈)	313- ⁷ / ₈ 287 (300- ⁷ / ₈)	321- ⁷ / ₈ 295 (300- ⁷ / ₈)	332- ⁷ / ₈ 306 (400- ⁷ / ₈)							
LNAV MDA	500-1	474 (500-1)	500-1 ³ / ₈	474 (500-1 ³ / ₈)							
CIRCLING	580-1	551 (600-1)	600-1 ¹ / ₂ 571 (600-1 ¹ / ₂)	600-2 571 (600-2)							

JUNIR Rwy 32R, 23L, 14R, 5L marked in center mat area.
 HIRL all rwys
 REIL Rwy 5L, 14R
 Rwy 5L-23R Idg 7552'
 Rwy 14R-32L Idg 7551'

RNAV (GPS) RWY 14L

SE-2, 26 JAN 2023 to 23 FEB 2023

SE-2, 26 JAN 2023 to 23 FEB 2023