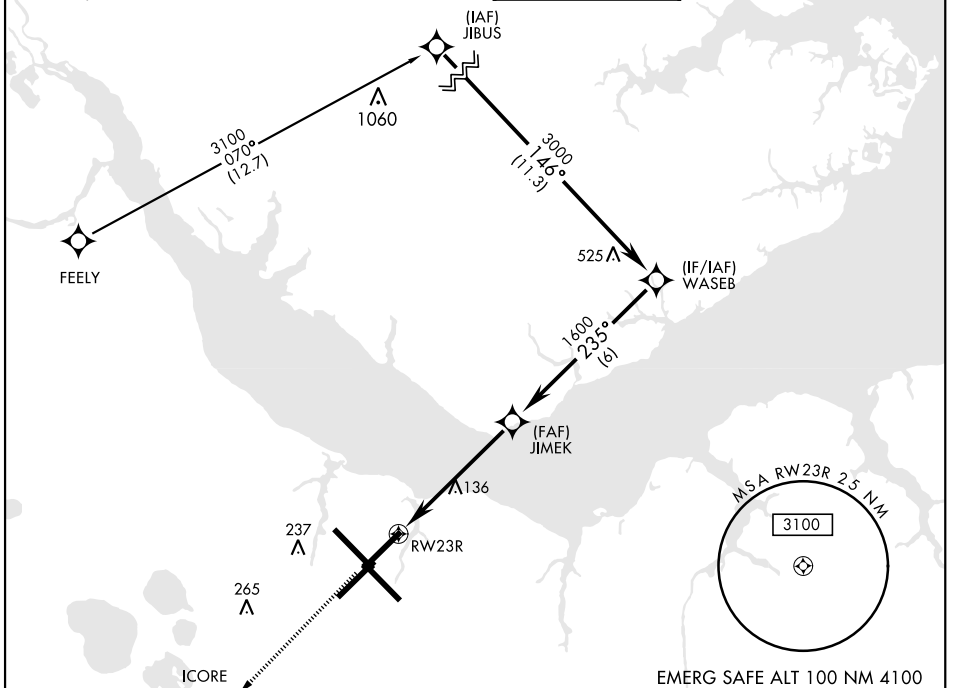


# RNAV (GPS) RWY 23R

WAAS Chan <b>51523</b> <b>W23A</b>	APCH CRS <b>235°</b>	Rwy ldg <b>7552</b> TDZE <b>23</b> Arprt Elev <b>29</b>	AL-471 [USN] CHERRY POINT MCAS (CUNNINGHAM FLD) (KNKT)
--	-------------------------	---	--

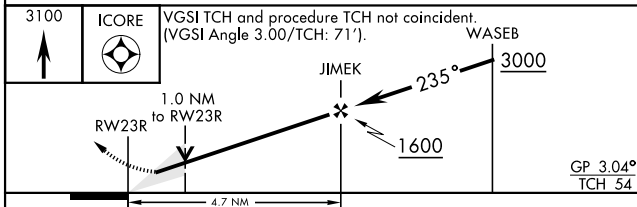
RNP APCH ▼ * When ALS inop, increase vis to ¾ mile. ** When ALS inop, increase to 1 mile.	MALSR 	Missed Approach: Climb to 3100 direct ICORE and hold. Continue climb in hold to 3100.
---	-----------	--

ATIS <b>127.475</b> <b>244.875</b>	(E) <b>119.75</b> (E) <b>132.575</b> (W) <b>119.35</b>	APP CON <b>360.775</b> (abv 2600') <b>299.6</b> (at/blw 2600') <b>377.175</b> (N) <b>124.1</b> <b>268.7</b>	TOWER <b>121.3</b> <b>340.2</b>	GND CON <b>128.625</b> <b>239.025</b>	CLNC DEL <b>125.95</b> <b>316.125</b>	ASR/ PAR
--	--	--	------------------------------------	---	---	-------------

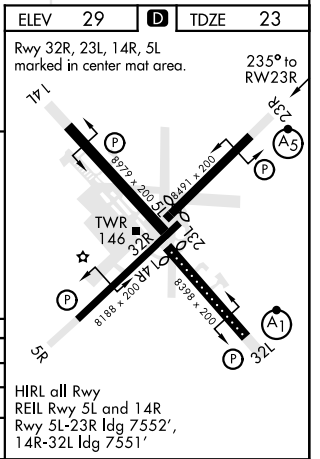


EMERG SAFE ALT 100 NM 4100	ELEV 29	TDZE 23
----------------------------	---------	---------

Rwy 32R, 23L, 14R, 5L marked in center mat area. 235° to RWY 23R



CATEGORY	A	B	C	D
LPV*	223-½		200	(200-½)
LNAV MDA**	400-½	377 (400-½)	400-⅝	377 (400-⅝)
GP CIRCLING	580-1	551 (600-1)	600-1½	571 (600-2)
			571 (600-1½)	571 (600-2)



HIRL all Rwy  
REIL Rwy 5L and 14R  
Rwy 5L-23R ldg 7552',  
14R-32L ldg 7551'

# RNAV (GPS) RWY 23R

SE-2, 26 JAN 2023 to 23 FEB 2023

SE-2, 26 JAN 2023 to 23 FEB 2023