

RNAV (GPS) RWY 5R

WAAS Chan 71199 W05A	APCH CRS 054°	Rwy Idg TDZE Arprt Elev	8188 27 29
--	-------------------------	-------------------------------	---------------------------------------

AL-471 [USN]

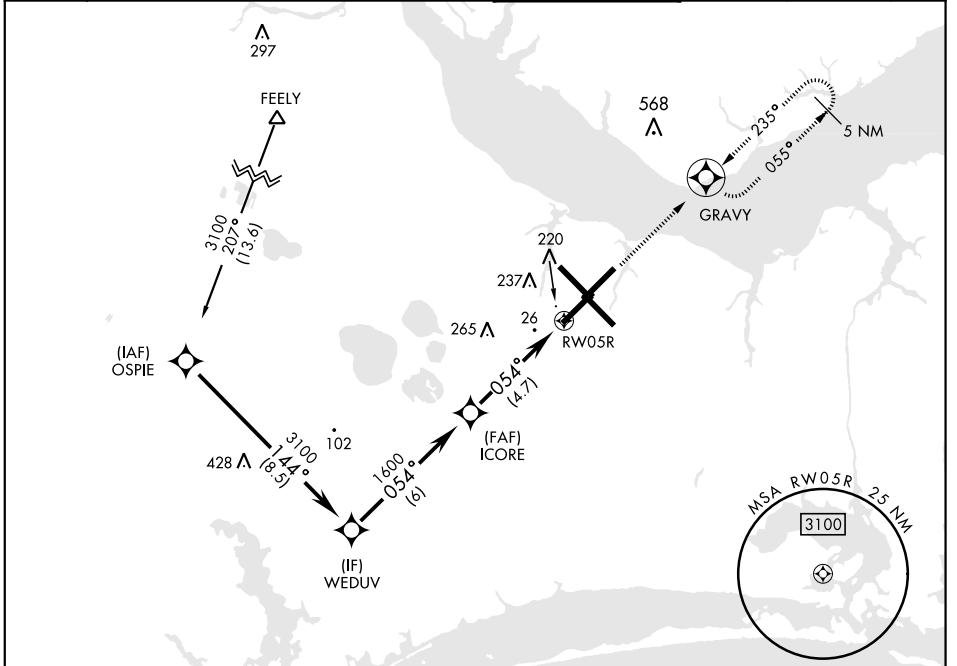
CHERRY POINT MCAS (CUNNINGHAM FLD) (KNKT)

RNP APCH

For uncompensated Baro-VNAV systems, LNAV/VNAV NA below -15°C (5°F) or above 54°C (129°F).

MISSED APPROACH: Climb to 3100 direct GRAVY and hold. Continue climb in hold to 3100.

ATIS 127.475 244.875	CHERRY POINT APP CON (E) 119.75 360.775 (abv 2600') (E) 132.575 299.6 (at/blw 2600') (W) 119.35 377.175 (N) 124.1 268.7	CHERRY POINT TOWER 121.3 340.2	GND CON 128.625 239.025	CLNC DEL 125.95 316.125	ASR/PAR
--	--	---	---	---	---------



SE-2, 26 JAN 2023 to 23 FEB 2023

SE-2, 26 JAN 2023 to 23 FEB 2023

EMERG SAFE ALT 100 NM 4100

VGSI and RNAV glidepath not coincident.

	<table border="1"> <tr> <td>3100</td> <td>GRAVY</td> </tr> <tr> <td>↑ LNAV only</td> <td></td> </tr> </table>	3100	GRAVY	↑ LNAV only	
3100	GRAVY				
↑ LNAV only					

ELEV	29	TDZE	27
Rwy 32R, 23L, 14R, 5L marked in center mat area.			

CATEGORY	A	B	C	D
LPV DA	227-¾	200	(200-¾)	
LNAV/VNAV DA	398-1	371	(400-1)	
LNAV MDA	500-1	473 (500-1)	500-1½	473 (500-1½)
C CIRCLING	580-1	551 (600-1)	600-1½	571 (600-1½)
			600-2	571 (600-2)

HIRL all Rwy
REIL Rwy 5L and 14R
Rwy 5L-23R Idg 7552',
14R-32L Idg 7551'

RNAV (GPS) RWY 5R