

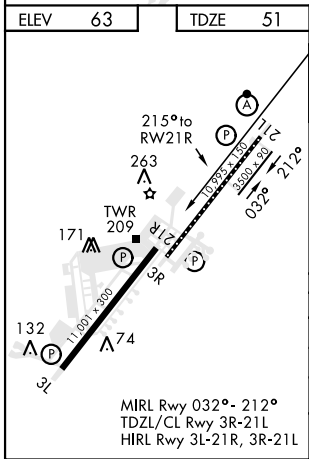
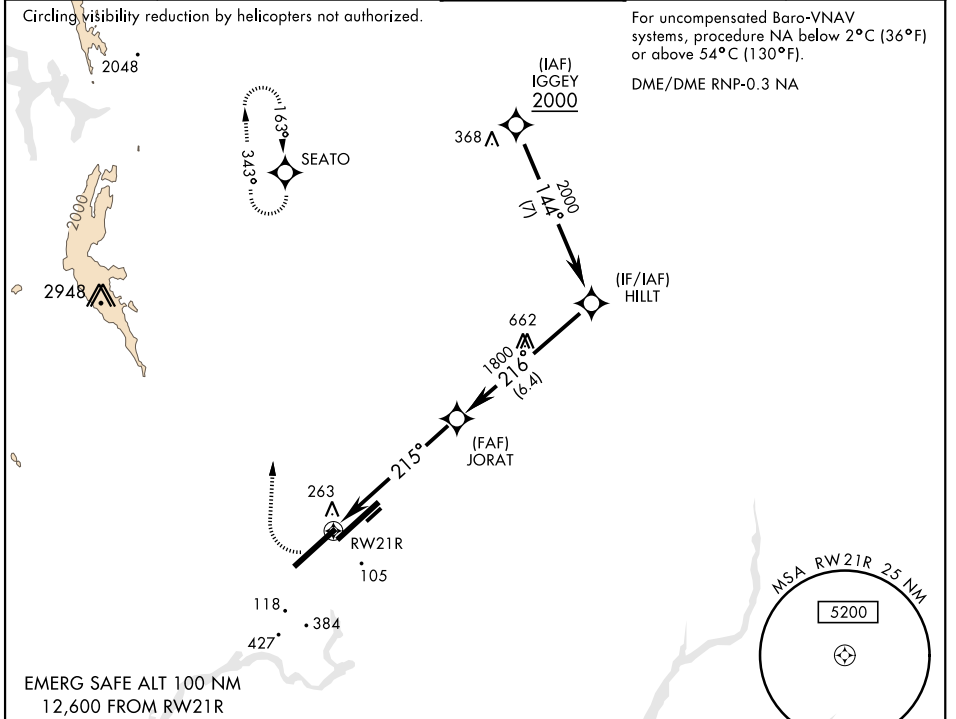
RNAV (GPS) RWY 21R

WAAS CH 71276 W21B	APCH CRS 215°	Rwy Idg 11,001 TDZE 51 Arprt Elev 63
---------------------------------	-------------------------	---

AL-488 [USAF]

TRAVIS AFB (KSUU)

RADAR required.		MISSED APPROACH: Climb to 2100 then climbing right turn to 4400 direct SEATO and hold, continue climb-in-hold to 4400.		
ATIS 135.55 292.125	APP CON 119.9 322.325 (S) 126.6 281.45 (N)	TOWER 120.75 254.4	GND CON 121.8 289.4	CLNC DEL 127.55 335.8



ELEV 63	TDZE 51	2100	4400	SEATO	VGSI and RNAV glidepath not coincident (VGSI Angle 2.80/TCH 75).	HILLT 2000
						GP 2.67° TCH 52
CATEGORY	A	B	C	D	E	
LPV DA		301-1	250	(300-1)		
RNAV/VNAV DA		475-1 5/8	424	(500-1%)		
RNAV MDA	540-1	489 (500-1)	540-1 3/8	489 (500-1%)		
CIRCLING *	540-1 477 (500-1)	580-1 517 (600-1)	1100-3 1037(1100-3)	1200-3	1137 (1200-3)	

RNAV (GPS) RWY 21R

SW-2, 26 JAN 2023 to 23 FEB 2023

SW-2, 26 JAN 2023 to 23 FEB 2023