

# RNAV (GPS) RWY 3L

WAAS CH <b>71275</b> <b>W03A</b>	APCH CRS <b>035°</b>	Rwy ldg <b>11,001</b> TDZE <b>34</b> Arprt Elev <b>63</b>
--	-------------------------	---

AL-488 [USAF]

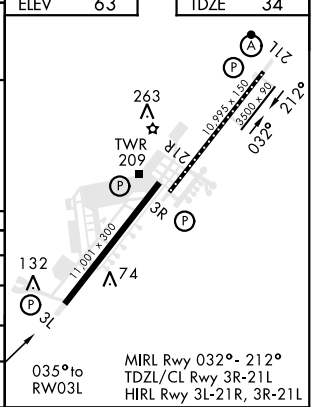
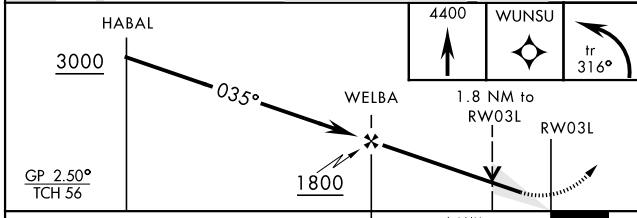
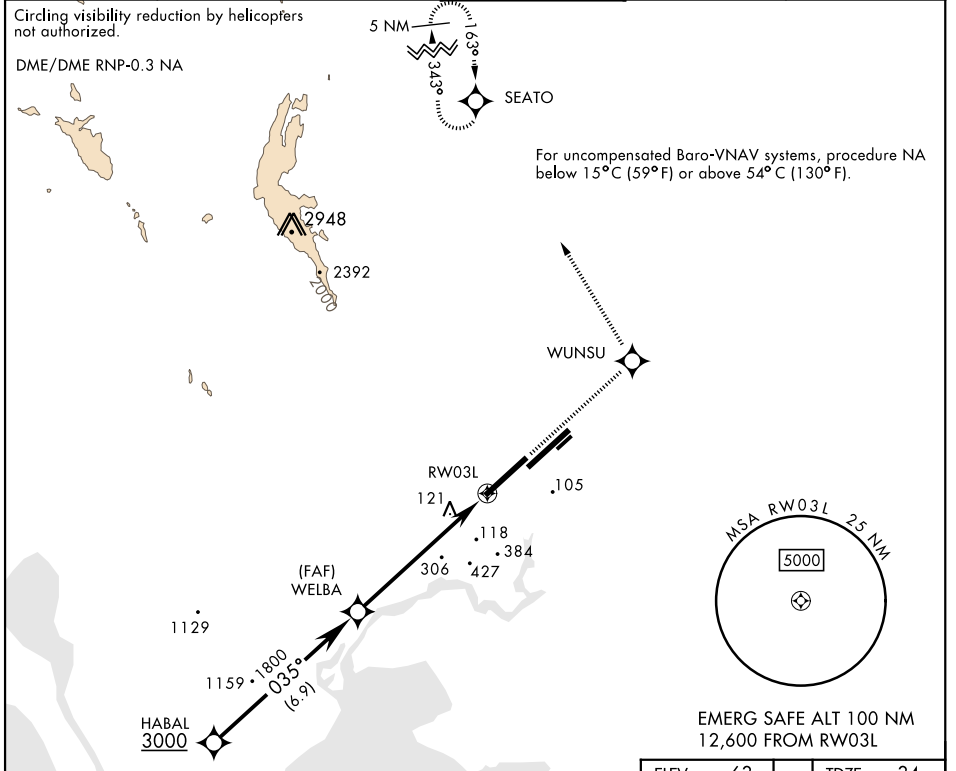
TRAVIS AFB (KSUU)

RADAR required.

▼ \* When Rwy 3R VGSI inop, circling to Rwy 3R not authorized at night. Circling not authorized NW of Rwy 3L-21R.

MISSED APPROACH: Climb to 4400 direct WUNSU, track 316° to SEATO and hold, continue climb-in-hold to 4400.

ATIS <b>135.55 292.125</b>	APP CON <b>119.9 322.325 (S)</b> <b>126.6 281.45 (N)</b>	TOWER <b>120.75 254.4</b>	GND CON <b>121.8 289.4</b>	CLNC DEL <b>127.55 335.8</b>
-------------------------------	--	------------------------------	-------------------------------	---------------------------------



CATEGORY	A	B	C	D	E
LPV DA		234/40	200	(200-34)	
LNAV/VNAV DA		522-2	488	(500-2)	
LNAV MDA	600/55	566 (600-1)	600-1½	566	(600-1½)
CIRCLING*	600-1	537 (600-1)	1100-3 1037(1100-3)	1200-3	1137 (1200-3)

# RNAV (GPS) RWY 3L

SW-2, 26 JAN 2023 to 23 FEB 2023

SW-2, 26 JAN 2023 to 23 FEB 2023