

# (SEATO.SEATO4) 17117 SEATO FOUR ARRIVAL

AL-488 (FAA)

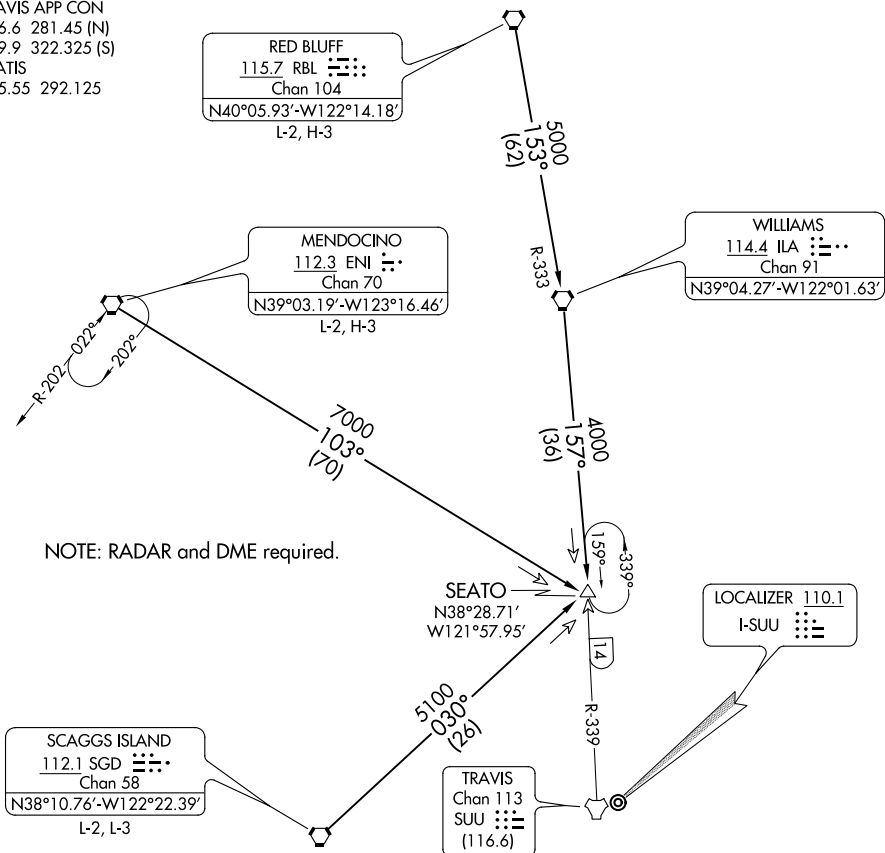
TRAVIS AFB (KSUU)  
FAIRFIELD, CALIFORNIA

TRAVIS APP CON  
126.6 281.45 (N)  
119.9 322.325 (S)  
D-ATIS  
135.55 292.125

RED BLUFF  
115.7 RBL  
Chan 104  
N40°05.93'-W122°14.18'  
L-2, H-3

MENDOCINO  
112.3 ENI  
Chan 70  
N39°03.19'-W123°16.46'  
L-2, H-3

WILLIAMS  
114.4 ILA  
Chan 91  
N39°04.27'-W122°01.63'



NOTE: RADAR and DME required.

SEATO  
N38°28.71'  
W121°57.95'

LOCALIZER 110.1  
I-SUU

SCAGGS ISLAND  
112.1 SGD  
Chan 58  
N38°10.76'-W122°22.39'  
L-2, L-3

TRAVIS  
Chan 113  
SUU  
(116.6)

NOTE: Chart not to scale.

## ARRIVAL ROUTE DESCRIPTION

MENDOCINO TRANSITION (ENI.SEATO4): From over ENI VORTAC via ENI R-103 to SEATO INT. Thence . . .

RED BLUFF TRANSITION (RBL.SEATO4): From over RBL VORTAC via RBL R-153 and ILA R-333 to ILA VORTAC, then via ILA R-157 to SEATO INT. Thence . . .

SCAGGS ISLAND TRANSITION (SGD.SEATO4): From over SGD VORTAC via SGD R-030 to SEATO INT. Thence . . .

. . . . From over SEATO INT:

RWY 3L/R: Expect RADAR vectors for ILS or LOC RWY 3L approach.

RWY 21L/R: Expect RADAR vectors for ILS or LOC RWY 21L approach.

### LOST COMMUNICATIONS:

RWY 3L via SEATO then TACAN RWY 3L.

RWY 21R via SEATO then TACAN RWY 21R.

# SEATO FOUR ARRIVAL (SEATO.SEATO4) 12DEC13

FAIRFIELD, CALIFORNIA  
TRAVIS AFB (KSUU)

SW-2, 26 JAN 2023 to 23 FEB 2023

SW-2, 26 JAN 2023 to 23 FEB 2023